



4104 Berry Lane

KAUFMAN, TX 75142

CYPRESS II FLOOR PLAN

2,462 SQUARE FEET	4 BEDROOMS	3.0 BATHROOMS	2 CAR GARAGE
-----------------------------	----------------------	-------------------------	------------------------

GEORGETOWN AT KINGS FORT

MODEL HOME • 4102 BERRY LANE | VIOLET IV

MODEL HOME • 4104 BERRY LANE | CYPRESS II

Model Home



The Classic Series Cypress II floor plan is a two-story home with four bedrooms and three bathrooms. Features of this plan include a covered porch, formal dining or study, large family room, open kitchen with custom cabinets and island, a bedroom suite with walk-in closet and garden tub, and an upstairs game room. Contact us or visit our model home for more information about building this plan.





4104 Berry Lane

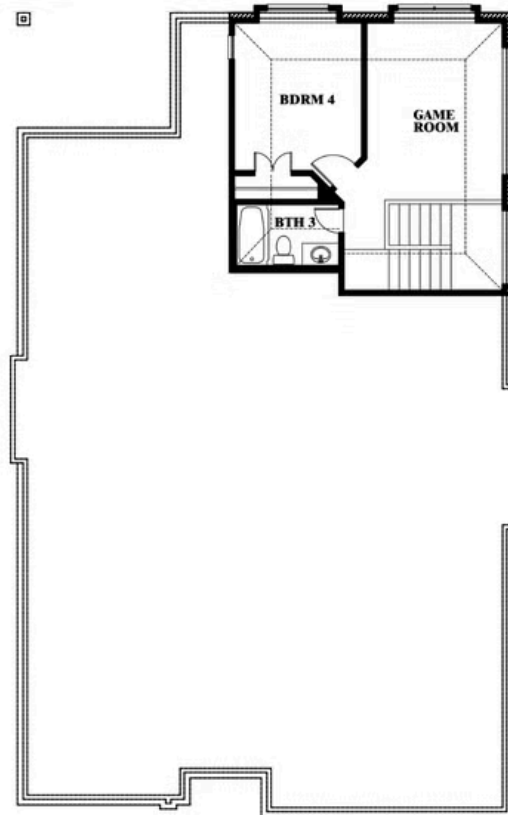
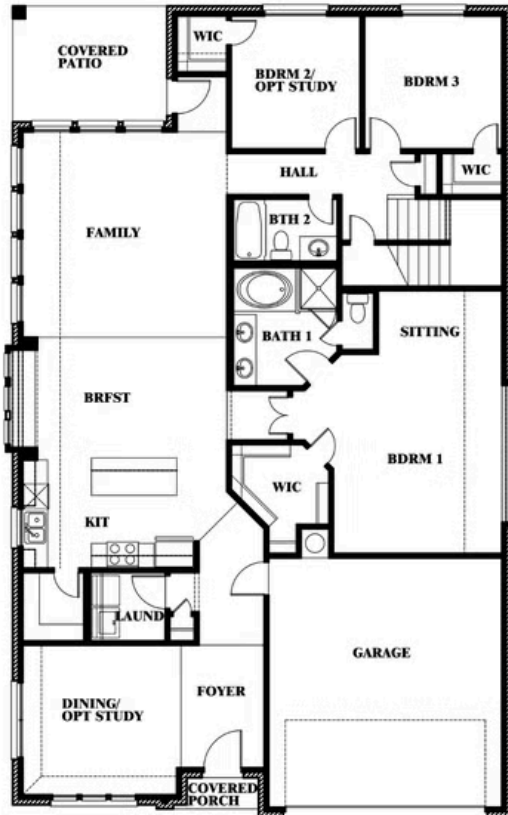
KAUFMAN, TX 75142

CYPRESS II FLOOR PLAN

CYPRESS II FLOOR PLAN



Cypress II



This brochure is for general informational purposes and is to be used as a guide only. Changes may be made during the development process and floorplans, dimensions, fixtures, fittings, finishes and specifications are subject to change without notice. Window placement, balcony configuration, wardrobe sizes and living areas may vary slightly within each plan type. EQUAL HOUSING OPPORTUNITY

