



# Violet IV

CLASSIC SERIES

**GEORGETOWN AT KINGS FORT**

4102 BERRY LANE, KAUFMAN, TX 75142

HOMES FROM

**\$425,990 – \$437,990**

**2,838**

SQUARE FEET

**4**

BEDROOMS

**3.5**

BATHROOMS

**2**

CAR GARAGE



**ELEVATION A**



**ELEVATION AS**

ELEVATION AS



**ELEVATION B**

ELEVATION B



**ELEVATION C**

ELEVATION C



**ELEVATION D**

ELEVATION D



# Violet IV

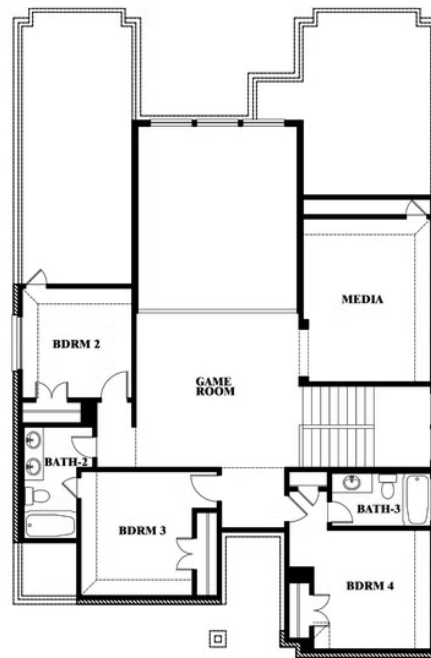
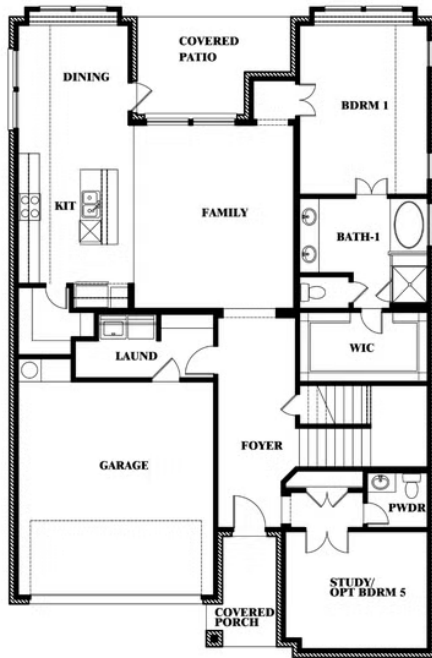
## VIOLET IV FLOOR PLAN

## GEORGETOWN AT KINGS FORT

4102 BERRY LANE, KAUFMAN, TX 75142



## Violet IV



This brochure is for general informational purposes and is to be used as a guide only. Changes may be made during the development process and floorplans, dimensions, fixtures, fittings, finishes and specifications are subject to change without notice. Window placement, balcony configuration, wardrobe sizes and living areas may vary slightly within each plan type. EQUAL HOUSING OPPORTUNITY



# Violet IV

**VIOLET IV FLOOR PLAN WITH OPTIONAL BEDROOM AT STUDY**

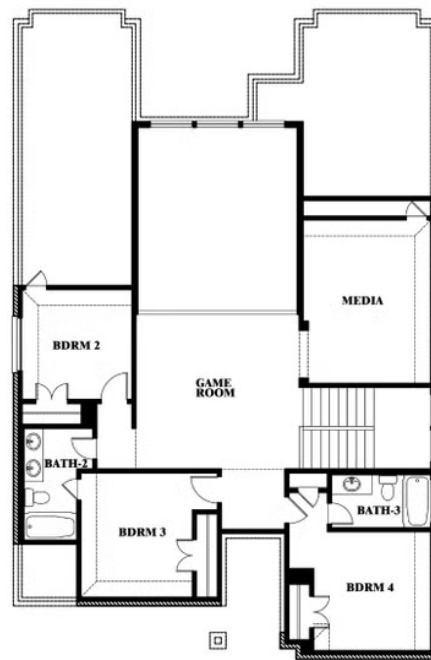
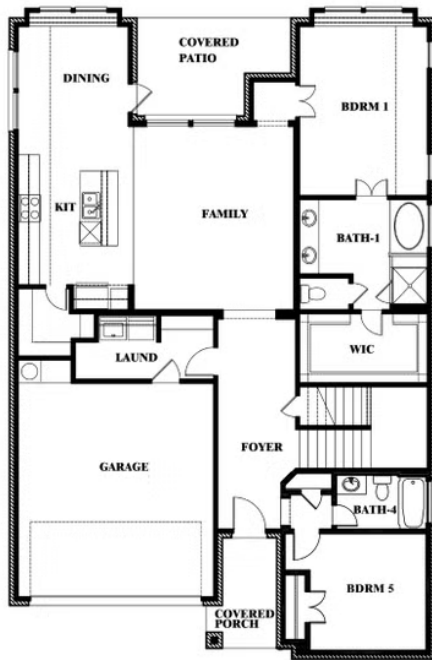
## GEORGETOWN AT KINGS FORT

4102 BERRY LANE, KAUFMAN, TX 75142



### Violet IV

Opt. Bed 5 & Bath 4 at Study



This brochure is for general informational purposes and is to be used as a guide only. Changes may be made during the development process and floorplans, dimensions, fixtures, fittings, finishes and specifications are subject to change without notice. Window placement, balcony configuration, wardrobe sizes and living areas may vary slightly within each plan type. EQUAL HOUSING OPPORTUNITY