



Cypress II

CLASSIC SERIES

HOMES FROM
\$544,990

UNION PARK CLASSIC 55

1817 RUNNING CREEK TRAIL, LITTLE ELM, TX 76227

2,454
SQUARE FEET

4
BEDROOMS

3.0
BATHROOMS

2
CAR GARAGE



ELEVATION F



ELEVATION B

ELEVATION B



ELEVATION C

ELEVATION C



ELEVATION D

ELEVATION D



ELEVATION E

ELEVATION E





Cypress II

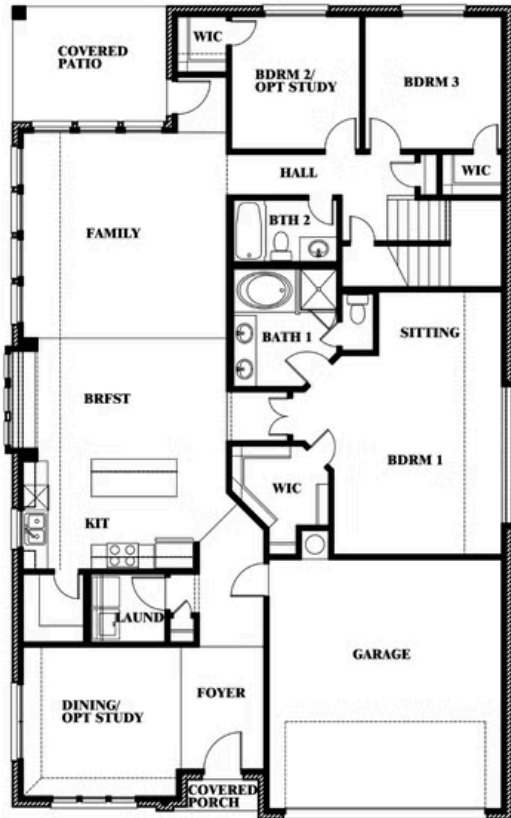
CYPRESS II FLOOR PLAN

UNION PARK CLASSIC 55

1817 RUNNING CREEK TRAIL, LITTLE ELM, TX 76227



Cypress II



This brochure is for general informational purposes and is to be used as a guide only. Changes may be made during the development process and floorplans, dimensions, fixtures, fittings, finishes and specifications are subject to change without notice. Window placement, balcony configuration, wardrobe sizes and living areas may vary slightly within each plan type. EQUAL HOUSING OPPORTUNITY





Cypress II

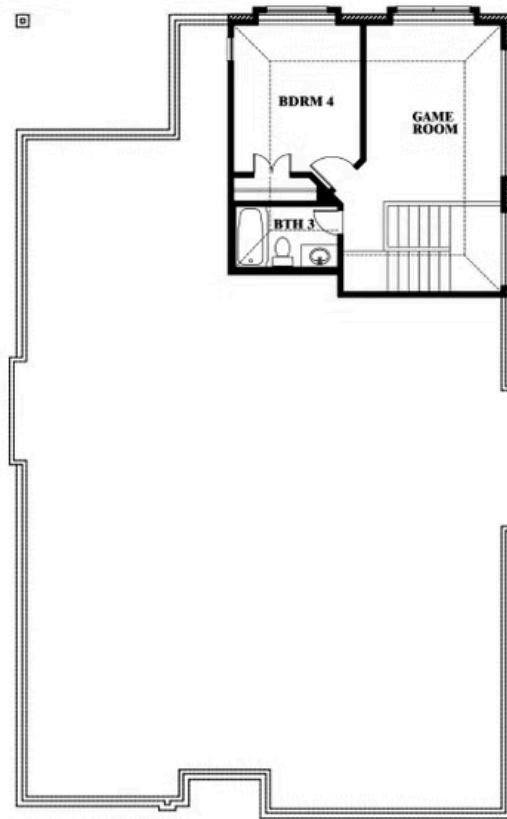
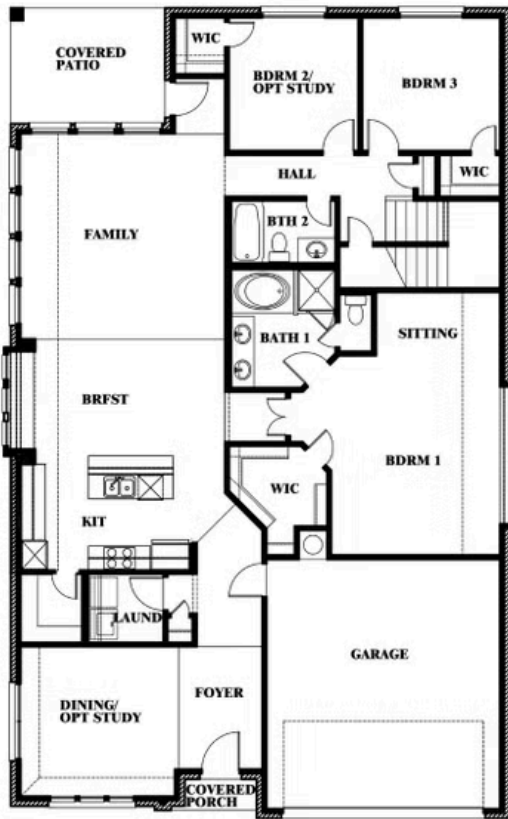
UNION PARK CLASSIC 55

1817 RUNNING CREEK TRAIL, LITTLE ELM, TX 76227

CYPRESS II FLOOR PLAN WITH OPTIONAL DELUXE KITCHEN



Cypress II Opt. Deluxe Kitchen



This brochure is for general informational purposes and is to be used as a guide only. Changes may be made during the development process and floorplans, dimensions, fixtures, fittings, finishes and specifications are subject to change without notice. Window placement, balcony configuration, wardrobe sizes and living areas may vary slightly within each plan type. EQUAL HOUSING OPPORTUNITY

