



# Hawthorne

**CLASSIC SERIES**

**UNION PARK CLASSIC 60**

1817 RUNNING CREEK TRAIL, LITTLE ELM, TX 76227

HOMES FROM  
**\$544,990**

**2,235**  
SQUARE FEET

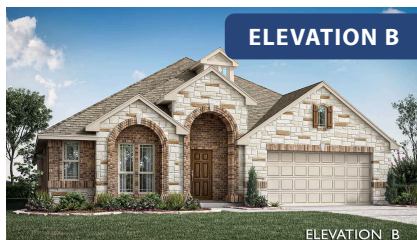
**4**  
BEDROOMS

**2.0**  
BATHROOMS

**2**  
CAR GARAGE

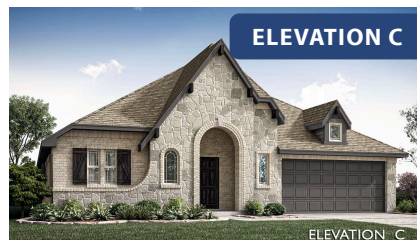


**ELEVATION A**



**ELEVATION B**

ELEVATION B



**ELEVATION C**

ELEVATION C





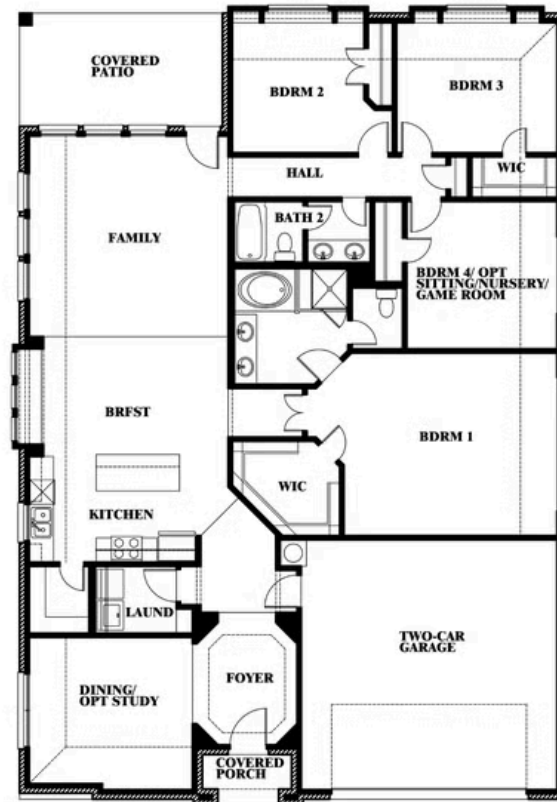
# Hawthorne

## UNION PARK CLASSIC 60

1817 RUNNING CREEK TRAIL, LITTLE ELM, TX 76227



## Hawthorne



This brochure is for general informational purposes and is to be used as a guide only. Changes may be made during the development process and floorplans, dimensions, fixtures, fittings, finishes and specifications are subject to change without notice. Window placement, balcony configuration, wardrobe sizes and living areas may vary slightly within each plan type. EQUAL HOUSING OPPORTUNITY



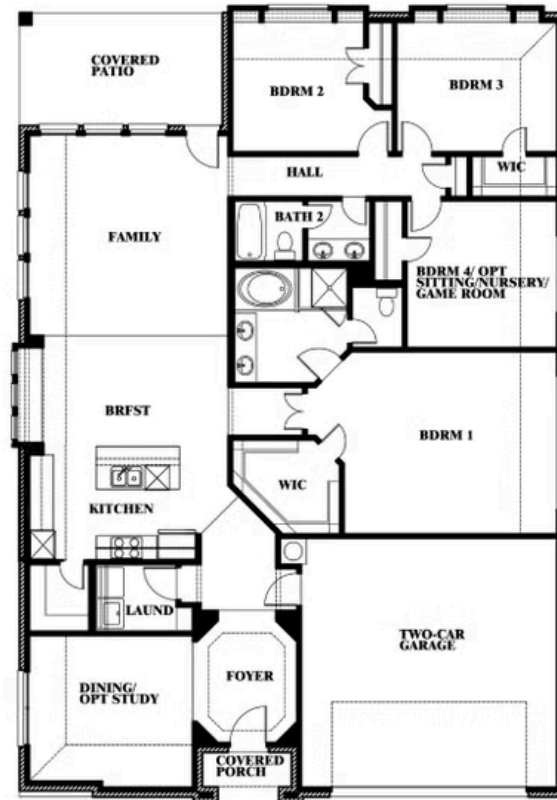
# Hawthorne

## UNION PARK CLASSIC 60

1817 RUNNING CREEK TRAIL, LITTLE ELM, TX 76227



## Hawthorne Opt. Deluxe Kitchen



This brochure is for general informational purposes and is to be used as a guide only. Changes may be made during the development process and floorplans, dimensions, fixtures, fittings, finishes and specifications are subject to change without notice. Window placement, balcony configuration, wardrobe sizes and living areas may vary slightly within each plan type. **EQUAL HOUSING OPPORTUNITY**