



# Rose III

**CLASSIC SERIES**

**UNION PARK CLASSIC 60**

1817 RUNNING CREEK TRAIL, LITTLE ELM, TX 76227

**2.5 Car Garage Included**

HOMES FROM

**\$653,990**

**3,557**  
SQUARE FEET

**5**  
BEDROOMS

**3.5**  
BATHROOMS

**2.5**  
CAR GARAGE



**ELEVATION A**



**ELEVATION AS**

ELEVATION AS



**ELEVATION B**

ELEVATION B



**ELEVATION C**

ELEVATION C



**ELEVATION D**

ELEVATION D





# Rose III

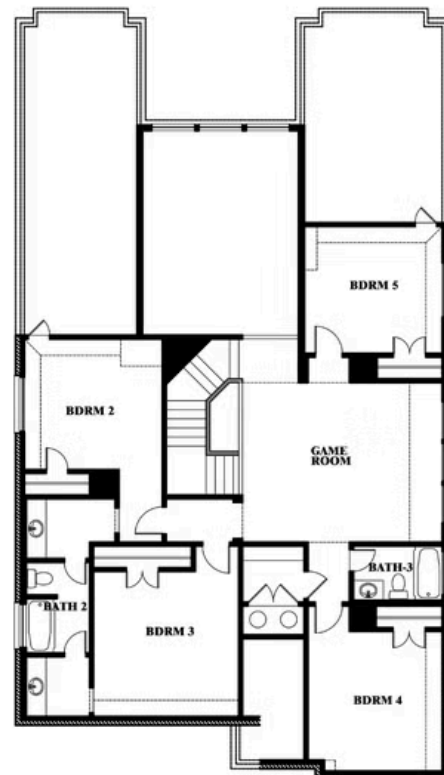
## ROSE III FLOOR PLAN

## UNION PARK CLASSIC 60

1817 RUNNING CREEK TRAIL, LITTLE ELM, TX 76227



## Rose III



This brochure is for general informational purposes and is to be used as a guide only. Changes may be made during the development process and floorplans, dimensions, fixtures, fittings, finishes and specifications are subject to change without notice. Window placement, balcony configuration, wardrobe sizes and living areas may vary slightly within each plan type. **EQUAL HOUSING OPPORTUNITY**





# Rose III

**ROSE III FLOOR PLAN WITH OPTIONAL BED & BATH AT STUDY**

## UNION PARK CLASSIC 60

1817 RUNNING CREEK TRAIL, LITTLE ELM, TX 76227



## Rose III Opt. Bed & Bath at Study



This brochure is for general informational purposes and is to be used as a guide only. Changes may be made during the development process and floorplans, dimensions, fixtures, fittings, finishes and specifications are subject to change without notice. Window placement, balcony configuration, wardrobe sizes and living areas may vary slightly within each plan type. EQUAL HOUSING OPPORTUNITY