



1817 Running Creek Trail

LITTLE ELM, TX 76227

UNION PARK

MAGNOLIA II FLOOR PLAN

Sales Model

3430
SQUARE FEET

4
BEDROOMS

3.5
BATHROOMS

2
CAR GARAGE

Model Home



The Classic Series Magnolia II floor plan is a two-story home with four bedrooms and two and a half bathrooms. Features of this plan include a covered porch, formal dining, large family room, study, open kitchen with custom cabinets and island, a bedroom suite with a walk-in closet and garden tub, and an upstairs game room and media room. Contact us or visit our model home for more information about building this plan.





1817 Running Creek Trail

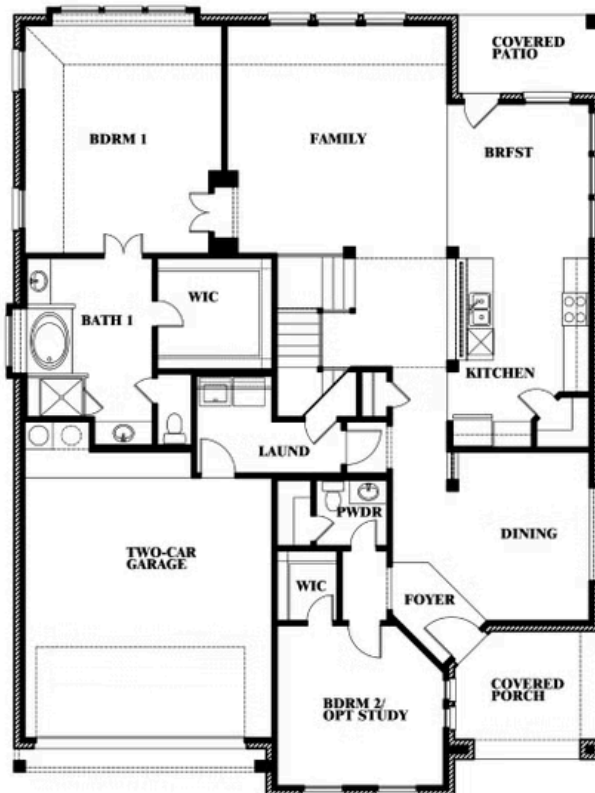
LITTLE ELM, TX 76227

MAGNOLIA II FLOOR PLAN

MAGNOLIA II FLOOR PLAN WITH OPTIONAL BATH 3



Magnolia II
Opt. Bath 3 at Bed 5



This brochure is for general informational purposes and is to be used as a guide only. Changes may be made during the development process and floorplans, dimensions, fixtures, fittings, finishes and specifications are subject to change without notice. Window placement, balcony configuration, wardrobe sizes and living areas may vary slightly within each plan type. **EQUAL HOUSING OPPORTUNITY**

