



Primrose IV

CLASSIC SERIES

ROCKWOOD 90

2407 ROYAL DOVE LANE, MANSFIELD, TX 76063

HOMES FROM
\$699,990

3,516
SQUARE FEET

3
BEDROOMS

3.5
BATHROOMS

3
CAR GARAGE



ELEVATION A



ELEVATION B

ELEVATION B



ELEVATION C

ELEVATION C





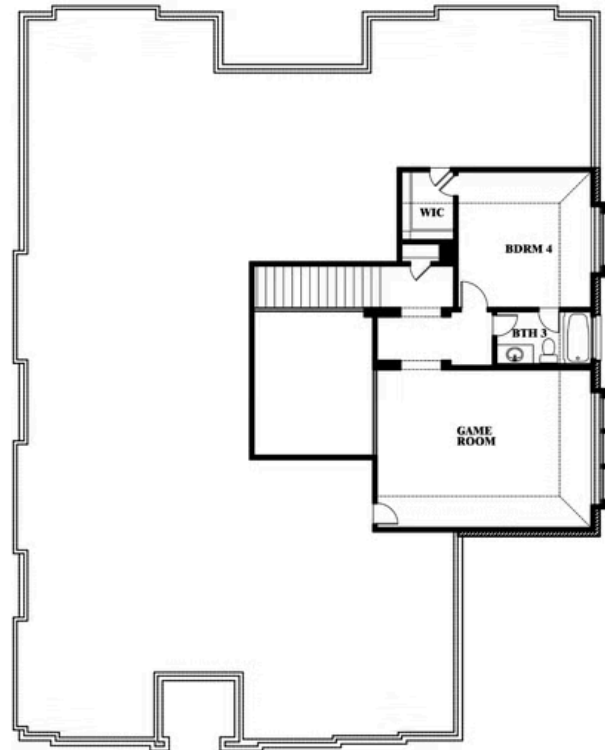
Primrose IV

ROCKWOOD 90

2407 ROYAL DOVE LANE, MANSFIELD, TX 76063



Primrose IV



This brochure is for general informational purposes and is to be used as a guide only. Changes may be made during the development process and floorplans, dimensions, fixtures, fittings, finishes and specifications are subject to change without notice. Window placement, balcony configuration, wardrobe sizes and living areas may vary slightly within each plan type. EQUAL HOUSING OPPORTUNITY