



Cypress II

CLASSIC SERIES

PAINTED TREE WOODLAND DISTRICT 50

4005 ATTWATER STREET, MCKINNEY, TX 75071

HOMES FROM
\$579,990

2,454
SQUARE FEET

4
BEDROOMS

3.0
BATHROOMS

2
CAR GARAGE



ELEVATION F



ELEVATION B

ELEVATION B



ELEVATION C

ELEVATION C



ELEVATION D

ELEVATION D



ELEVATION E

ELEVATION E



ELEVATION BS

ELEVATION BS



ELEVATION CS

ELEVATION CS



ELEVATION FS

ELEVATION FS





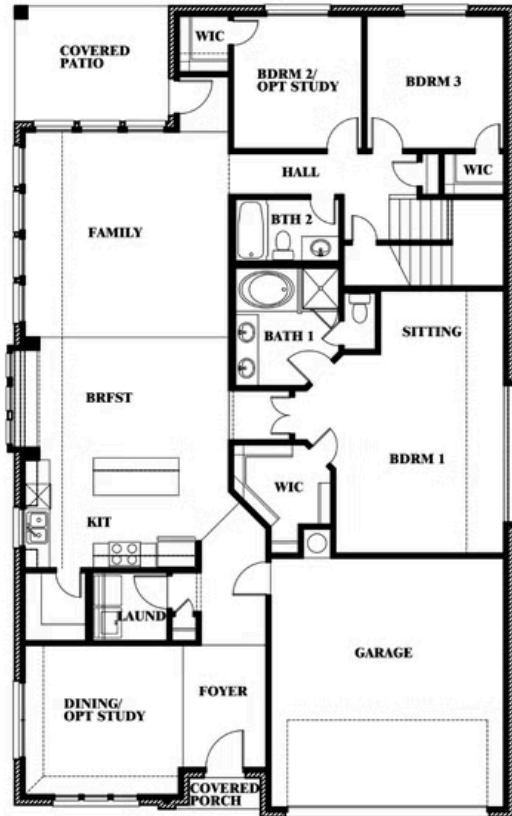
Cypress II

PAINTED TREE WOODLAND DISTRICT 50

4005 ATTWATER STREET, MCKINNEY, TX 75071



Cypress II



This brochure is for general informational purposes and is to be used as a guide only. Changes may be made during the development process and floorplans, dimensions, fixtures, fittings, finishes and specifications are subject to change without notice. Window placement, balcony configuration, wardrobe sizes and living areas may vary slightly within each plan type. **EQUAL HOUSING OPPORTUNITY**