



# Rose

CLASSIC SERIES

## PAINTED TREE WOODLAND DISTRICT 50

4005 ATTWATER STREET, MCKINNEY, TX 75071

HOMES FROM

**\$641,990**

**3,359**

SQUARE FEET

**4**

BEDROOMS

**3.5**

BATHROOMS

**2**

CAR GARAGE



**ELEVATION D**



**ELEVATION A**

ELEVATION A



**ELEVATION AS**

ELEVATION AS



**ELEVATION B**

ELEVATION B



**ELEVATION C**

ELEVATION C





# Rose

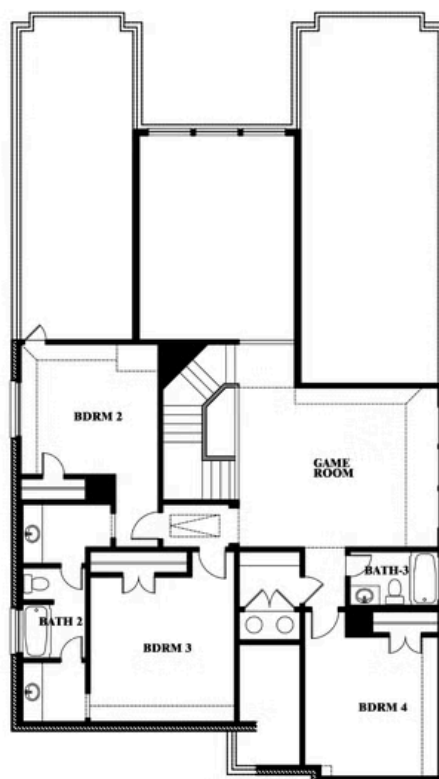
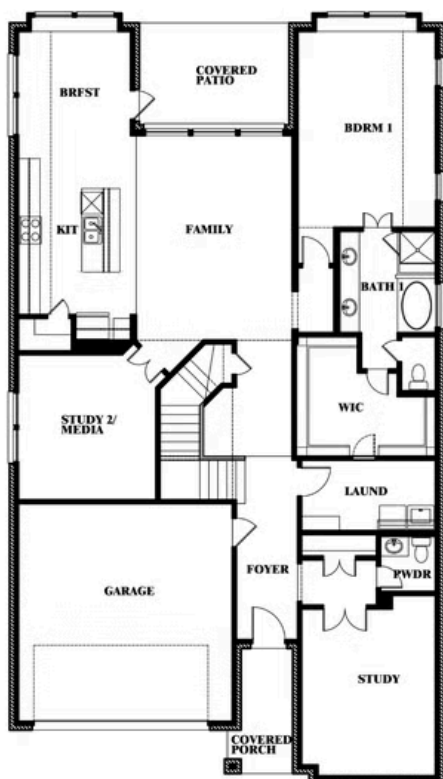
## ROSE FLOOR PLAN

## PAINTED TREE WOODLAND DISTRICT 50

4005 ATTWATER STREET, MCKINNEY, TX 75071



## Rose



This brochure is for general informational purposes and is to be used as a guide only. Changes may be made during the development process and floorplans, dimensions, fixtures, fittings, finishes and specifications are subject to change without notice. Window placement, balcony configuration, wardrobe sizes and living areas may vary slightly within each plan type. **EQUAL HOUSING OPPORTUNITY**





# Rose

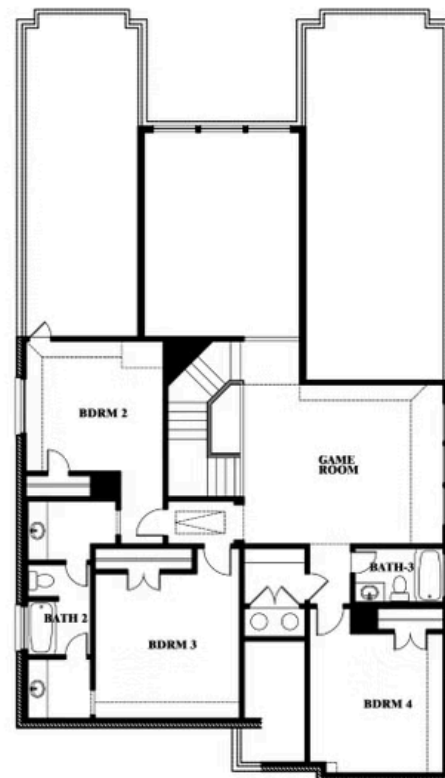
**ROSE FLOOR PLAN WITH OPTIONAL BED & BATH AT STUDY**

## PAINTED TREE WOODLAND DISTRICT 50

4005 ATTWATER STREET, MCKINNEY, TX 75071



**Rose**  
Opt. Bed & Bath at Study



This brochure is for general informational purposes and is to be used as a guide only. Changes may be made during the development process and floorplans, dimensions, fixtures, fittings, finishes and specifications are subject to change without notice. Window placement, balcony configuration, wardrobe sizes and living areas may vary slightly within each plan type. EQUAL HOUSING OPPORTUNITY