



# Carolina II

CLASSIC SERIES

**PAINTED TREE WOODLAND DISTRICT 60**

4005 ATTWATER STREET, MCKINNEY, TX 75071

HOMES FROM  
**\$694,990**

**2,771**  
SQUARE FEET

**3**  
BEDROOMS

**3.0**  
BATHROOMS

**2**  
CAR GARAGE

**ELEVATION D**



**ELEVATION A**



ELEVATION A

**ELEVATION AS**



ELEVATION AS

**ELEVATION C**



ELEVATION C

**ELEVATION E**



ELEVATION E

**ELEVATION F**



ELEVATION F





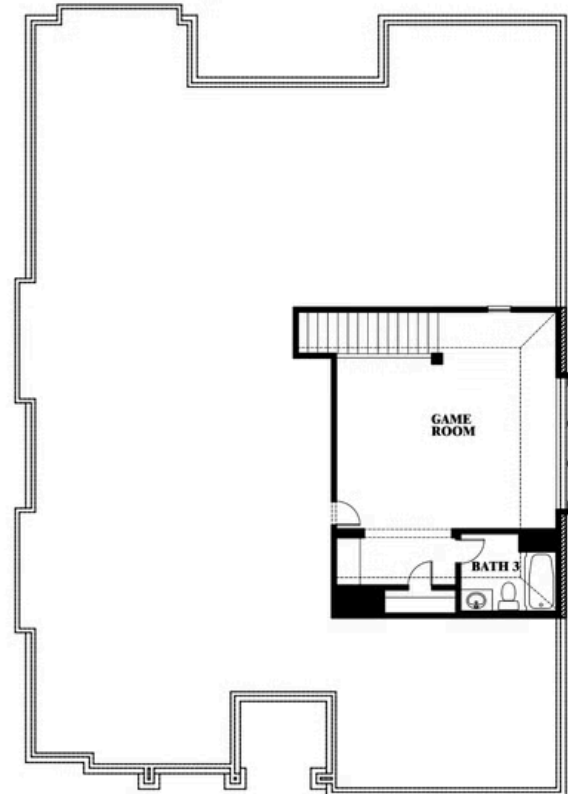
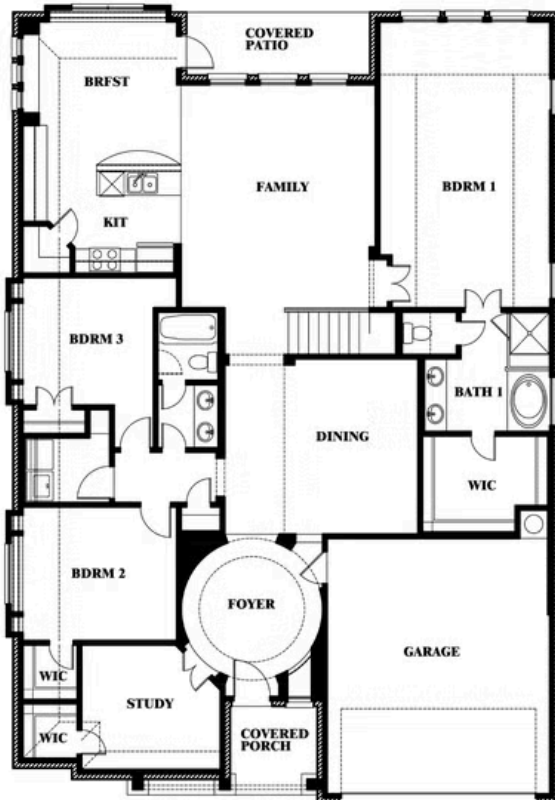
# Carolina II

## PAINTED TREE WOODLAND DISTRICT 60

4005 ATTWATER STREET, MCKINNEY, TX 75071



## Carolina II



This brochure is for general informational purposes and is to be used as a guide only. Changes may be made during the development process and floorplans, dimensions, fixtures, fittings, finishes and specifications are subject to change without notice. Window placement, balcony configuration, wardrobe sizes and living areas may vary slightly within each plan type. **EQUAL HOUSING OPPORTUNITY**





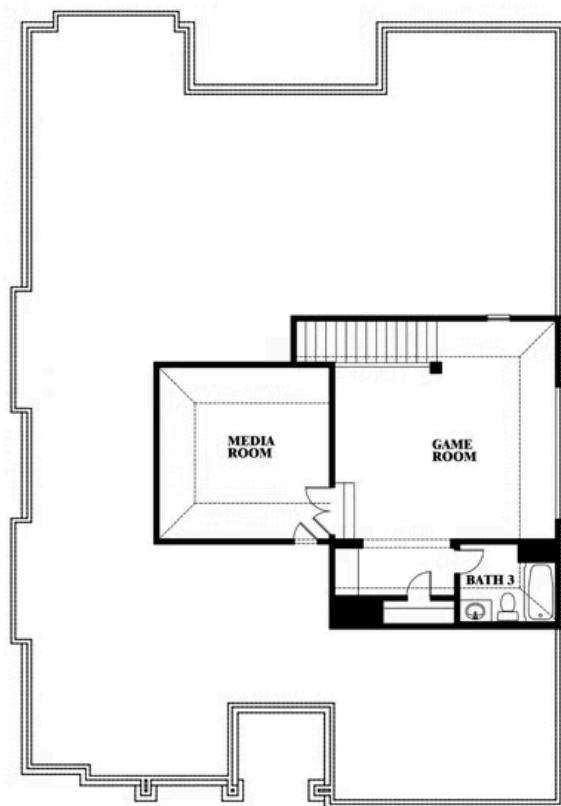
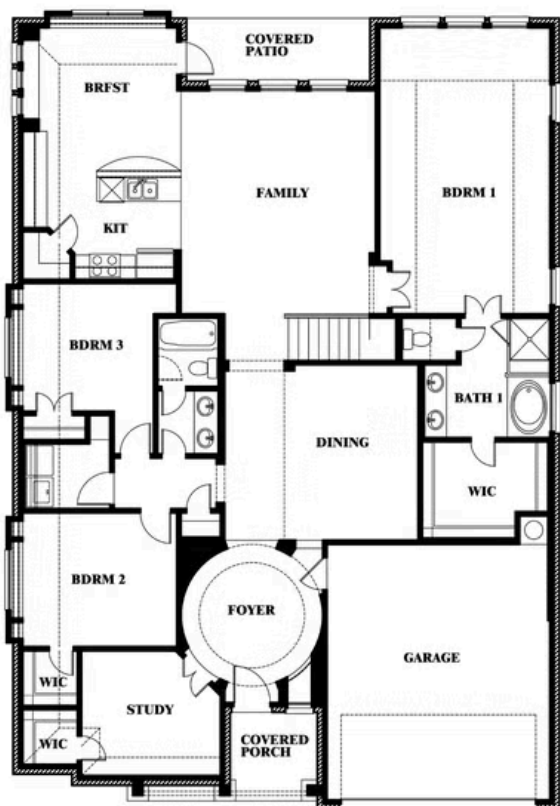
# Carolina II

## PAINTED TREE WOODLAND DISTRICT 60

4005 ATTWATER STREET, MCKINNEY, TX 75071



## Carolina II with Media Room



This brochure is for general informational purposes and is to be used as a guide only. Changes may be made during the development process and floorplans, dimensions, fixtures, fittings, finishes and specifications are subject to change without notice. Window placement, balcony configuration, wardrobe sizes and living areas may vary slightly within each plan type. **EQUAL HOUSING OPPORTUNITY**

