



Hawthorne II

HOMES FROM
\$694,990

CLASSIC SERIES

PAINTED TREE WOODLAND DISTRICT 60

4005 ATTWATER STREET, MCKINNEY, TX 75071

2,752
SQUARE FEET

4
BEDROOMS

3.0
BATHROOMS

2
CAR GARAGE



ELEVATION B



ELEVATION A

ELEVATION A



ELEVATION C

ELEVATION C



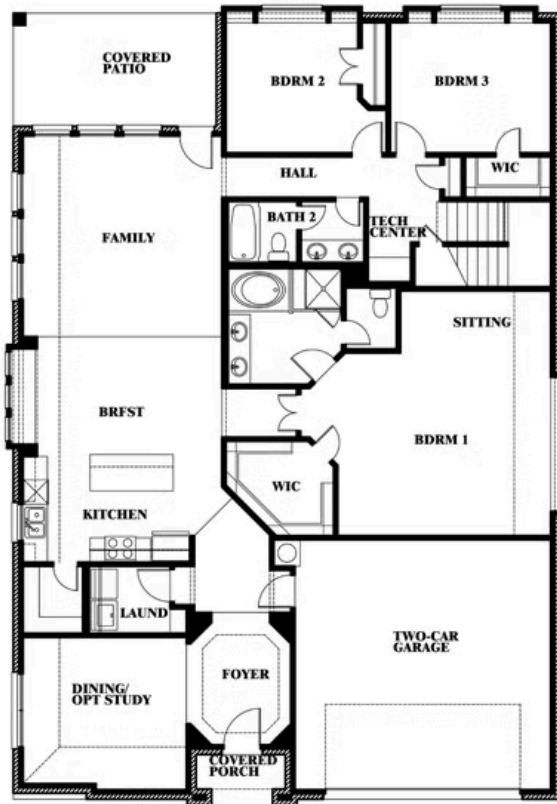


Hawthorne II

PAINTED TREE WOODLAND DISTRICT 60
4005 ATTWATER STREET, MCKINNEY, TX 75071



Hawthorne II



This brochure is for general informational purposes and is to be used as a guide only. Changes may be made during the development process and floorplans, dimensions, fixtures, fittings, finishes and specifications are subject to change without notice. Window placement, balcony configuration, wardrobe sizes and living areas may vary slightly within each plan type. EQUAL HOUSING OPPORTUNITY



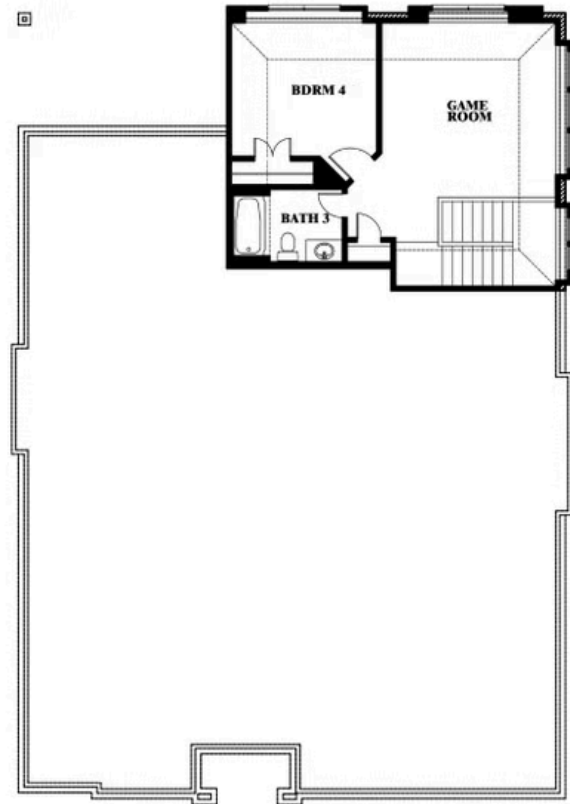
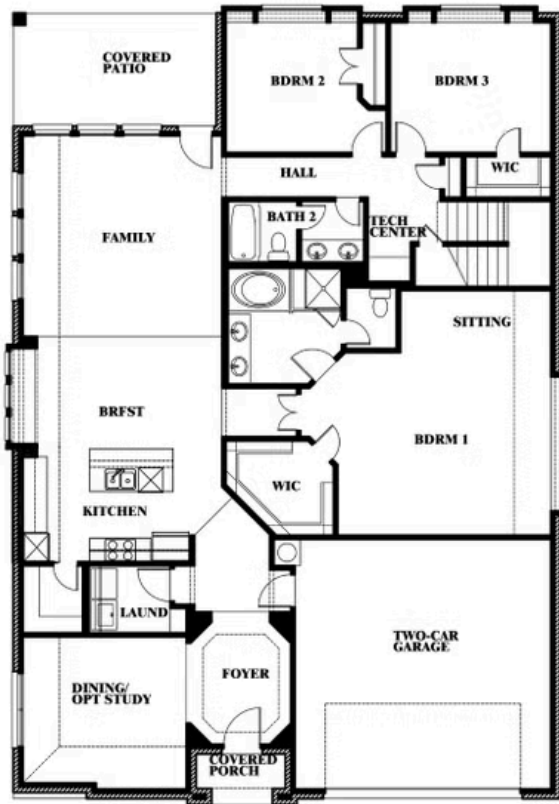


Hawthorne II

PAINTED TREE WOODLAND DISTRICT 60
4005 ATTWATER STREET, MCKINNEY, TX 75071



Hawthorne II Opt. Deluxe Kitchen



This brochure is for general informational purposes and is to be used as a guide only. Changes may be made during the development process and floorplans, dimensions, fixtures, fittings, finishes and specifications are subject to change without notice. Window placement, balcony configuration, wardrobe sizes and living areas may vary slightly within each plan type. EQUAL HOUSING OPPORTUNITY

