



# Rose III

CLASSIC SERIES

## PAINTED TREE WOODLAND DISTRICT 60

4005 ATTWATER STREET, MCKINNEY, TX 75071

**3-Car Garage Included**

HOMES FROM  
**\$780,990**

**3,557**  
SQUARE FEET

**5**  
BEDROOMS

**3.5**  
BATHROOMS

**3**  
CAR GARAGE



**ELEVATION A**



**ELEVATION AS**



**ELEVATION B**



**ELEVATION C**



**ELEVATION D**





# Rose III

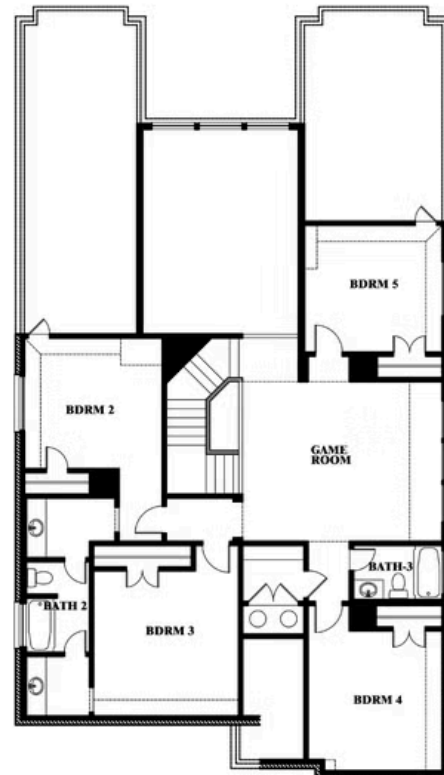
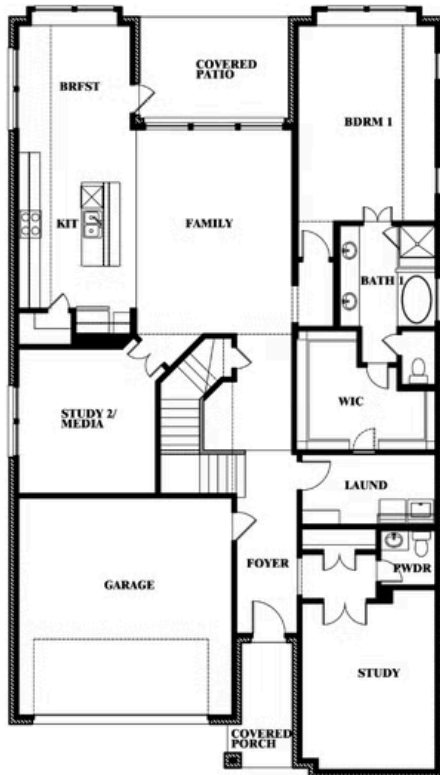
## ROSE III FLOOR PLAN

## PAINTED TREE WOODLAND DISTRICT 60

4005 ATTWATER STREET, MCKINNEY, TX 75071



## Rose III



This brochure is for general informational purposes and is to be used as a guide only. Changes may be made during the development process and floorplans, dimensions, fixtures, fittings, finishes and specifications are subject to change without notice. Window placement, balcony configuration, wardrobe sizes and living areas may vary slightly within each plan type. EQUAL HOUSING OPPORTUNITY





# Rose III

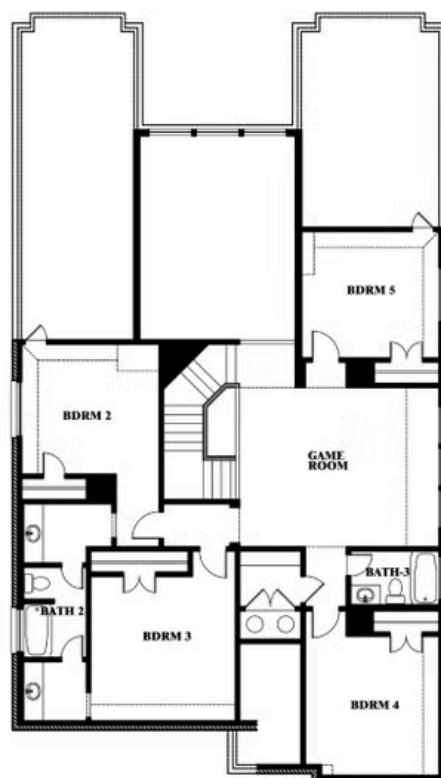
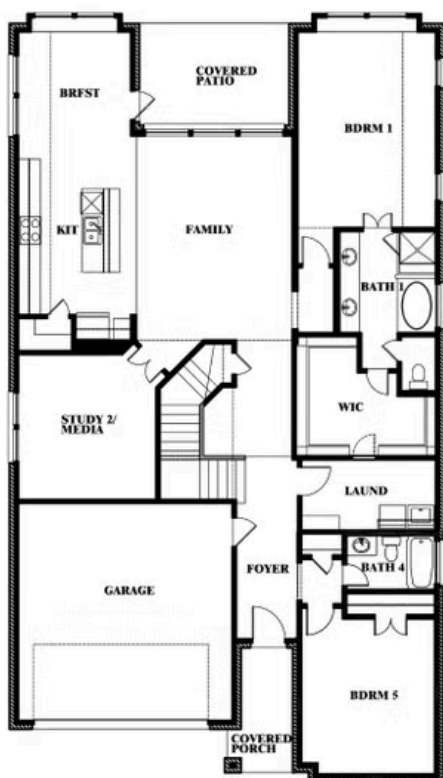
ROSE III FLOOR PLAN WITH OPTIONAL BED & BATH AT STUDY

## PAINTED TREE WOODLAND DISTRICT 60

4005 ATTWATER STREET, MCKINNEY, TX 75071



## Rose III Opt. Bed & Bath at Study



This brochure is for general informational purposes and is to be used as a guide only. Changes may be made during the development process and floorplans, dimensions, fixtures, fittings, finishes and specifications are subject to change without notice. Window placement, balcony configuration, wardrobe sizes and living areas may vary slightly within each plan type. EQUAL HOUSING OPPORTUNITY