



Carolina IV

CLASSIC SERIES

PAINTED TREE WOODLAND DISTRICT 70

4005 ATTWATER STREET, MCKINNEY, TX 75071

3-Car Garage Included

HOMES FROM
\$799,990

3,280
SQUARE FEET

4
BEDROOMS

3.0
BATHROOMS

3
CAR GARAGE

ELEVATION D



ELEVATION A



ELEVATION AS



ELEVATION C



ELEVATION E



ELEVATION F





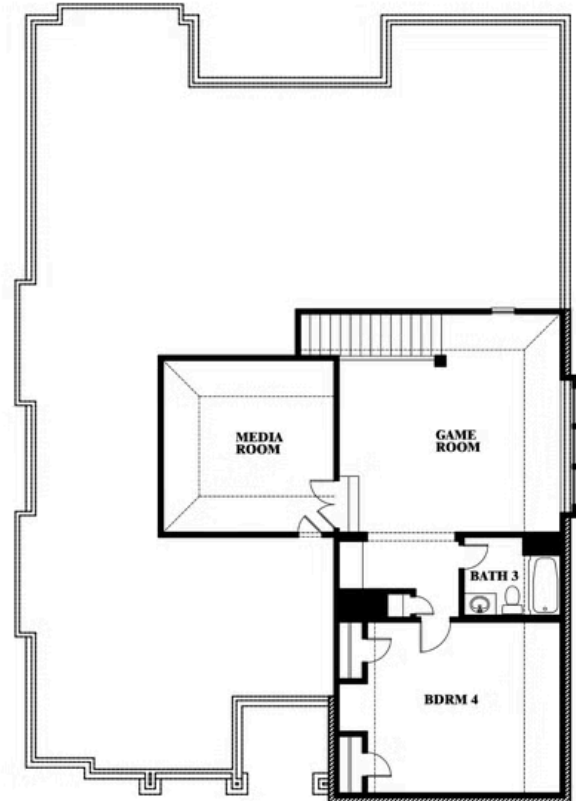
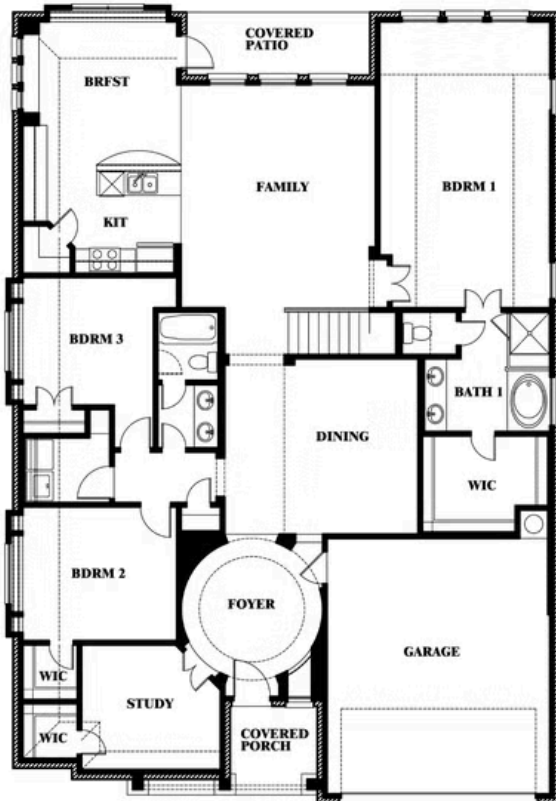
Carolina IV

PAINTED TREE WOODLAND DISTRICT 70

4005 ATTWATER STREET, MCKINNEY, TX 75071



Carolina IV



This brochure is for general informational purposes and is to be used as a guide only. Changes may be made during the development process and floorplans, dimensions, fixtures, fittings, finishes and specifications are subject to change without notice. Window placement, balcony configuration, wardrobe sizes and living areas may vary slightly within each plan type. EQUAL HOUSING OPPORTUNITY

