



# Primrose FE II

HOMES FROM  
**\$809,990**

CLASSIC SERIES

## PAINTED TREE WOODLAND DISTRICT 70

4005 ATTWATER STREET, MCKINNEY, TX 75071

3-Car Garage Included

**3,336**  
SQUARE FEET

**3**  
BEDROOMS

**3.5**  
BATHROOMS

**3**  
CAR GARAGE



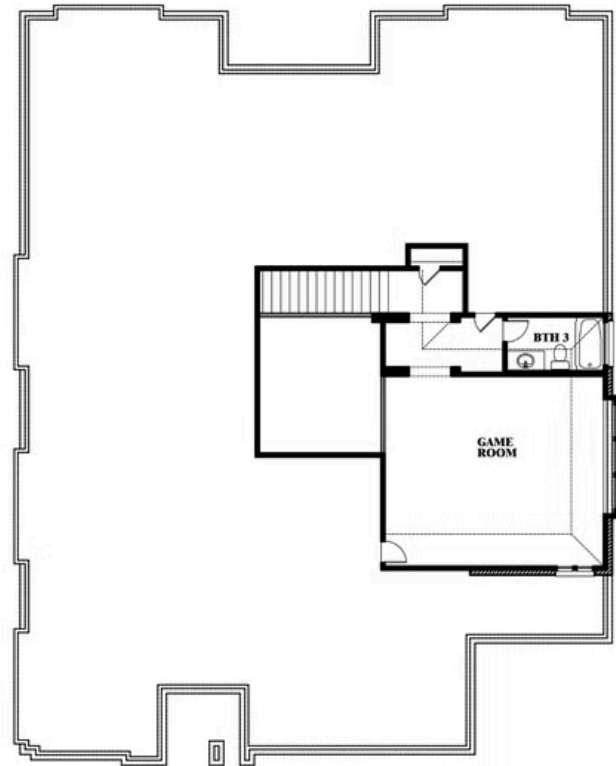


# Primrose FE II

**PAINTED TREE WOODLAND DISTRICT 70**  
4005 ATTWATER STREET, MCKINNEY, TX 75071



## Primrose FE II



This brochure is for general informational purposes and is to be used as a guide only. Changes may be made during the development process and floorplans, dimensions, fixtures, fittings, finishes and specifications are subject to change without notice. Window placement, balcony configuration, wardrobe sizes and living areas may vary slightly within each plan type. EQUAL HOUSING OPPORTUNITY

