

Cypress II

CLASSIC SERIES

WILLOW WOOD CLASSIC 50

5709 CYPRESSWOOD LANE, MCKINNEY, TX 75071

HOMES FROM

\$533,990

2,454
SQUARE FEET

4
BEDROOMS

3.0
BATHROOMS

2
CAR GARAGE

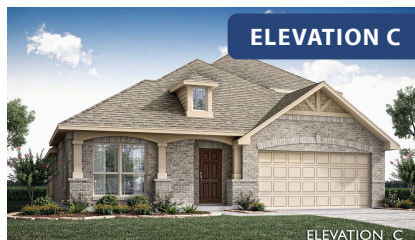


ELEVATION F



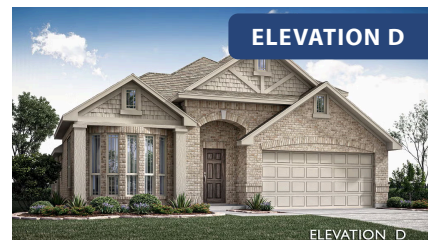
ELEVATION B

ELEVATION B



ELEVATION C

ELEVATION C



ELEVATION D

ELEVATION D



ELEVATION E

ELEVATION E

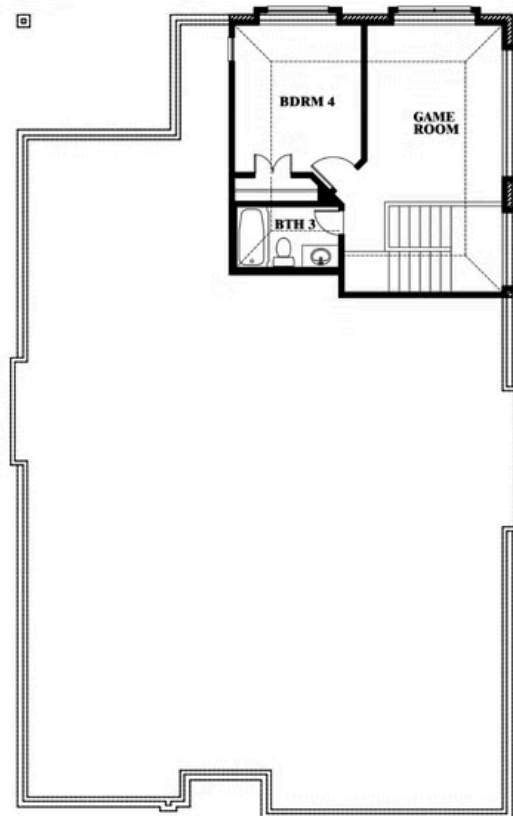
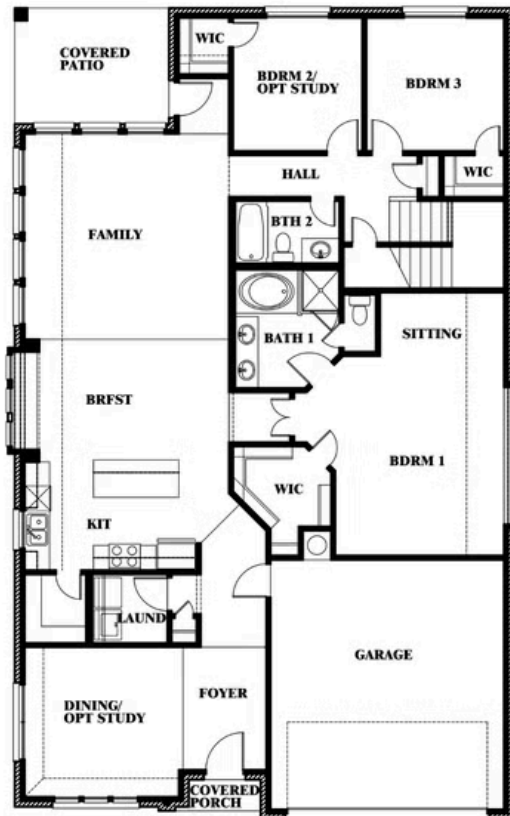
Cypress II

WILLOW WOOD CLASSIC 50

5709 CYPRESSWOOD LANE, MCKINNEY, TX 75071



Cypress II



This brochure is for general informational purposes and is to be used as a guide only. Changes may be made during the development process and floorplans, dimensions, fixtures, fittings, finishes and specifications are subject to change without notice. Window placement, balcony configuration, wardrobe sizes and living areas may vary slightly within each plan type. **EQUAL HOUSING OPPORTUNITY**