

Rose III

CLASSIC SERIES

WILLOW WOOD CLASSIC 60

5709 CYPRESSWOOD LANE, MCKINNEY, TX 75071

HOMES FROM

\$677,990

3,557
SQUARE FEET

5
BEDROOMS

3.5
BATHROOMS

2
CAR GARAGE

ELEVATION A



ELEVATION AS



ELEVATION AS

ELEVATION B



ELEVATION B

ELEVATION C



ELEVATION C

ELEVATION D



ELEVATION D

Rose III

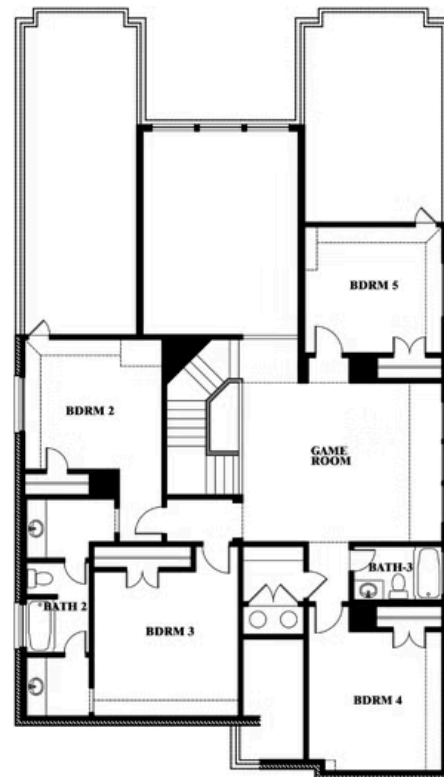
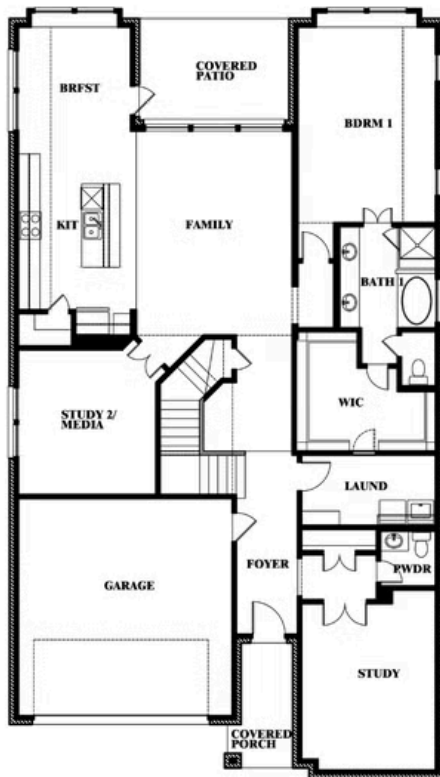
ROSE III FLOOR PLAN

WILLOW WOOD CLASSIC 60

5709 CYPRESSWOOD LANE, MCKINNEY, TX 75071



Rose III



This brochure is for general informational purposes and is to be used as a guide only. Changes may be made during the development process and floorplans, dimensions, fixtures, fittings, finishes and specifications are subject to change without notice. Window placement, balcony configuration, wardrobe sizes and living areas may vary slightly within each plan type. **EQUAL HOUSING OPPORTUNITY**

Rose III

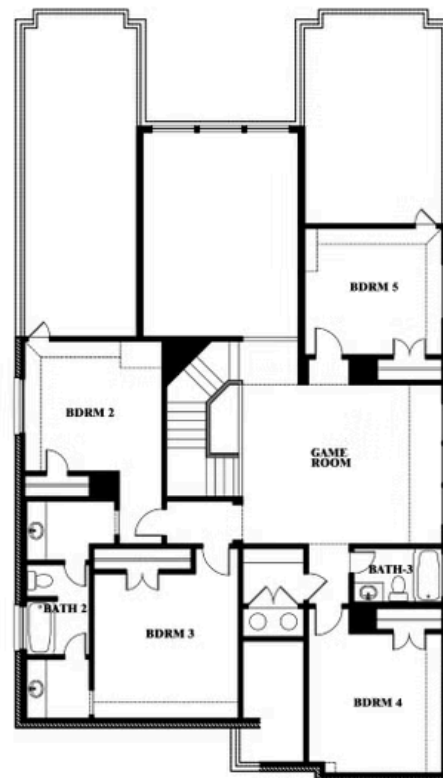
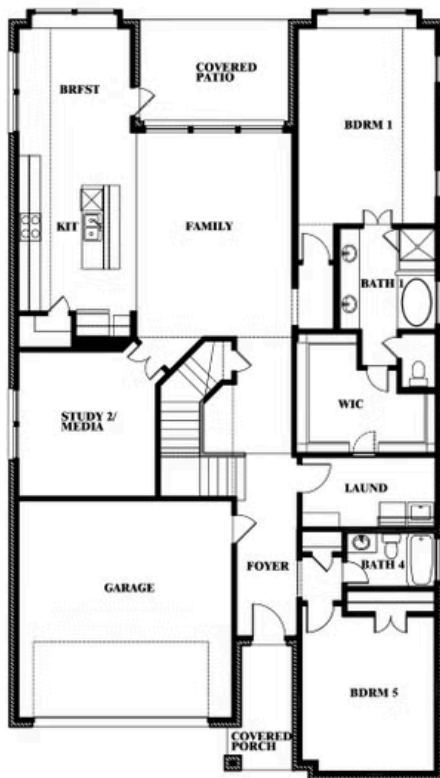
ROSE III FLOOR PLAN WITH OPTIONAL BED & BATH AT STUDY

WILLOW WOOD CLASSIC 60

5709 CYPRESSWOOD LANE, MCKINNEY, TX 75071



Rose III Opt. Bed & Bath at Study



This brochure is for general informational purposes and is to be used as a guide only. Changes may be made during the development process and floorplans, dimensions, fixtures, fittings, finishes and specifications are subject to change without notice. Window placement, balcony configuration, wardrobe sizes and living areas may vary slightly within each plan type. EQUAL HOUSING OPPORTUNITY