

Violet III

CLASSIC SERIES

WILLOW WOOD CLASSIC 60

5709 CYPRESSWOOD LANE, MCKINNEY, TX 75071

HOMES FROM

\$617,990

2,628
SQUARE FEET

4
BEDROOMS

3.5
BATHROOMS

2
CAR GARAGE



ELEVATION A



ELEVATION AS

ELEVATION AS



ELEVATION B

ELEVATION B



ELEVATION C

ELEVATION C



ELEVATION D

ELEVATION D

Violet III

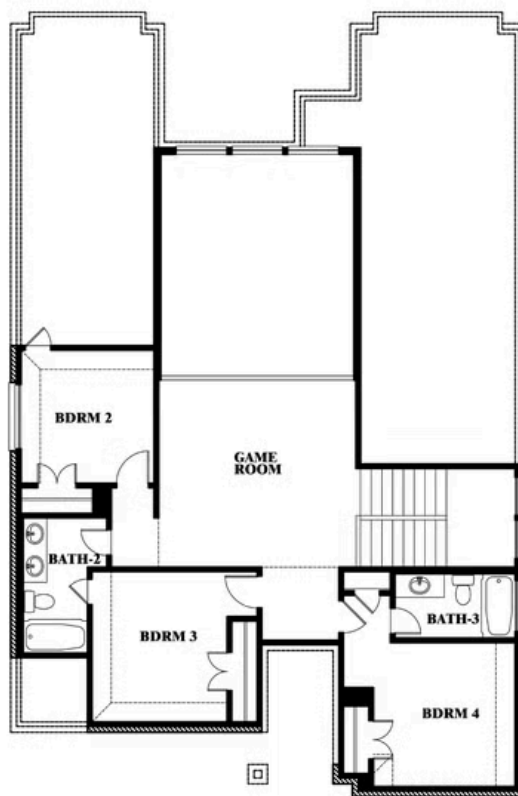
VIOLET III FLOOR PLAN

WILLOW WOOD CLASSIC 60

5709 CYPRESSWOOD LANE, MCKINNEY, TX 75071



Violet III



This brochure is for general informational purposes and is to be used as a guide only. Changes may be made during the development process and floorplans, dimensions, fixtures, fittings, finishes and specifications are subject to change without notice. Window placement, balcony configuration, wardrobe sizes and living areas may vary slightly within each plan type. EQUAL HOUSING OPPORTUNITY

Violet III

WILLOW WOOD CLASSIC 60

5709 CYPRESSWOOD LANE, MCKINNEY, TX 75071

VIOLET III FLOOR PLAN WITH BEDROOM AT STUDY



Violet III Opt. Bed 5 & Bath 4 at Study



This brochure is for general informational purposes and is to be used as a guide only. Changes may be made during the development process and floorplans, dimensions, fixtures, fittings, finishes and specifications are subject to change without notice. Window placement, balcony configuration, wardrobe sizes and living areas may vary slightly within each plan type. EQUAL HOUSING OPPORTUNITY