

# Violet IV

CLASSIC SERIES

HOMES FROM  
**\$629,990**

## WILLOW WOOD CLASSIC 60

5709 CYPRESSWOOD LANE, MCKINNEY, TX 75071

**2,838**  
SQUARE FEET

**4**  
BEDROOMS

**3.5**  
BATHROOMS

**2**  
CAR GARAGE



**ELEVATION A**



**ELEVATION AS**



**ELEVATION B**



**ELEVATION C**



**ELEVATION D**

# Violet IV

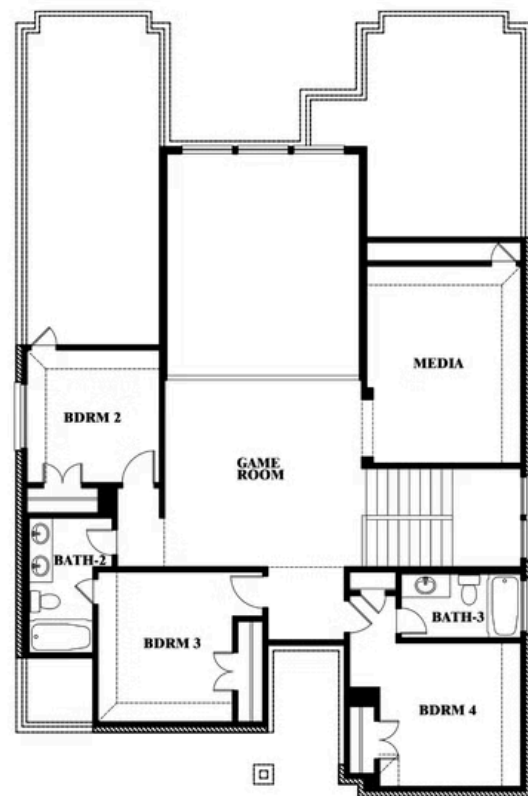
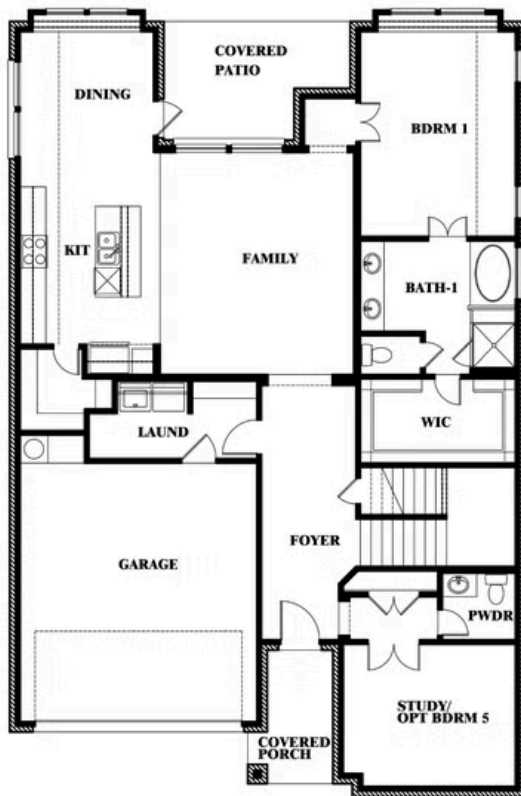
## VIOLET IV FLOOR PLAN

## WILLOW WOOD CLASSIC 60

5709 CYPRESSWOOD LANE, MCKINNEY, TX 75071



## Violet IV



This brochure is for general informational purposes and is to be used as a guide only. Changes may be made during the development process and floorplans, dimensions, fixtures, fittings, finishes and specifications are subject to change without notice. Window placement, balcony configuration, wardrobe sizes and living areas may vary slightly within each plan type. EQUAL HOUSING OPPORTUNITY

# Violet IV

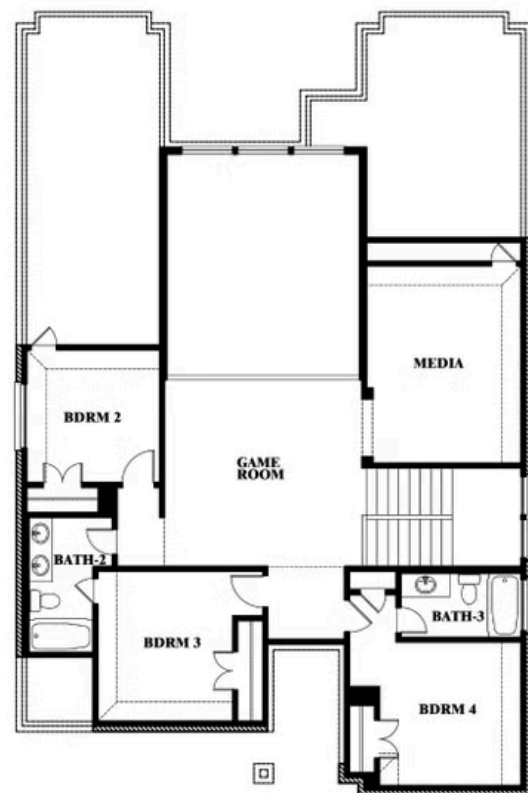
**VIOLET IV FLOOR PLAN WITH OPTIONAL BEDROOM AT STUDY**

## WILLOW WOOD CLASSIC 60

5709 CYPRESSWOOD LANE, MCKINNEY, TX 75071



## Violet IV Opt. Bed 5 & Bath 4 at Study



This brochure is for general informational purposes and is to be used as a guide only. Changes may be made during the development process and floorplans, dimensions, fixtures, fittings, finishes and specifications are subject to change without notice. Window placement, balcony configuration, wardrobe sizes and living areas may vary slightly within each plan type. **EQUAL HOUSING OPPORTUNITY**