



5613 Cypresswood Lane

PRICED AT
\$762,611

MCKINNEY, TX 75071

WILLOW WOOD

ROSE II FLOOR PLAN

3620
SQUARE FEET

5
BEDROOMS

4.0
BATHROOMS

2
CAR GARAGE

Under Construction



ELEVATION D

BRAND NEW! NEVER LIVED IN. Ready April 2026. Bloomfield Homes Rose II features 5 bedrooms and 4 baths in a two-story layout with 3 living areas and a 2-car garage enhanced by cedar garage doors. Loaded with luxury features and upgrades throughout, this home makes a strong first impression with a bricked front porch and beautiful upgraded brick selection that create inviting curb appeal, while the striking 8 foot mahogany front door sets a refined tone upon entry. Painted cabinetry, matte black hardware, and commercial white trim create a crisp, modern contrast that carries throughout the home. The family room is visually open to the second level, accented by upgraded railings and oak handrails that add dimension and architectural interest. The deluxe kitchen offers built-in stainless steel appliances, a vented wood hood, pots and pans drawers, trash pull-out, single bowl sink, upgraded faucet, and under-cabinet LED lighting, blending function with elevated design. The primary suite on the main level is complete with a dual-sink vanity, garden tub with separate shower, and a huge walk-in closet with direct access to the laundry room for added convenience. Downstairs includes a private Study with glass French doors and a secondary bedroom near a full bath featuring a glass-enclosed shower. The second level has a spacious game room and dedicated media room with surround sound, while 3 additional bedrooms are positioned near 2 full baths for added convenience. Practical upgrades include 8 foot interior doors on the first floor, full gutters, and durable finishes selected throughout. Located in Willow Wood, residents enjoy a welcoming neighborhood setting with convenient access to everyday essentials. Call or visit the Bloomfield Homes model at Willow Wood to experience this Rose II in person.





5613 Cypresswood Lane

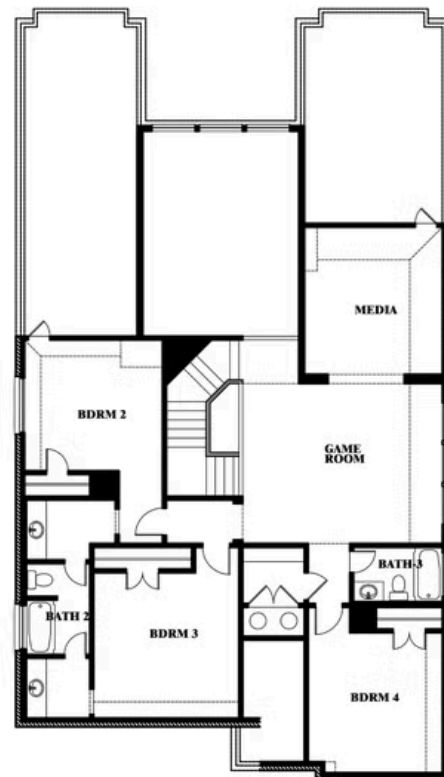
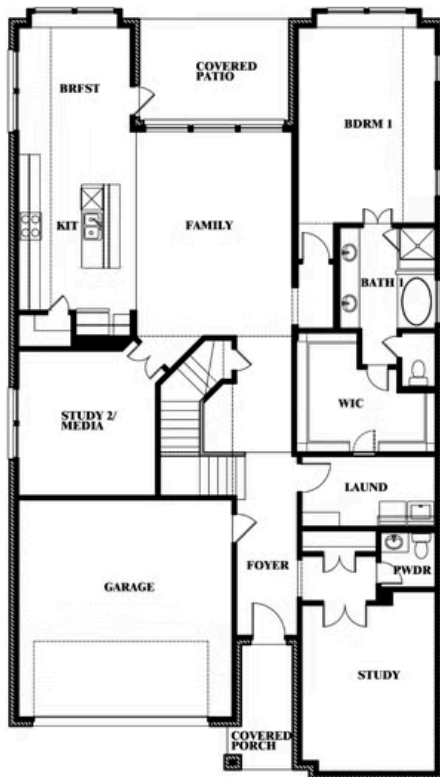
MCKINNEY, TX 75071

ROSE II FLOOR PLAN

ROSE II FLOOR PLAN



Rose II



This brochure is for general informational purposes and is to be used as a guide only. Changes may be made during the development process and floorplans, dimensions, fixtures, fittings, finishes and specifications are subject to change without notice. Window placement, balcony configuration, wardrobe sizes and living areas may vary slightly within each plan type. **EQUAL HOUSING OPPORTUNITY**





5613 Cypresswood Lane

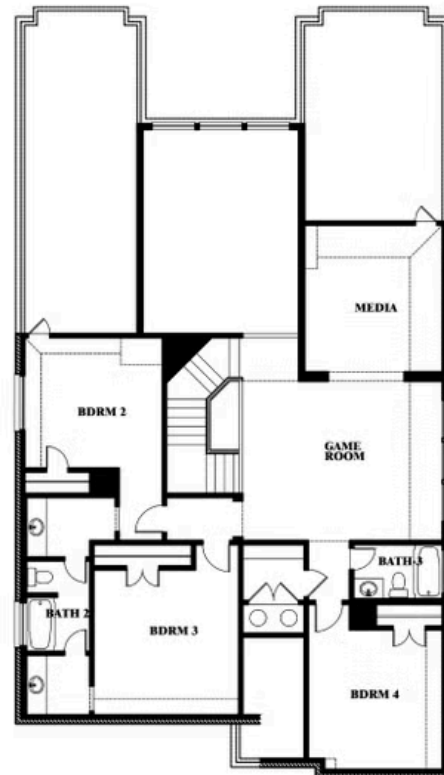
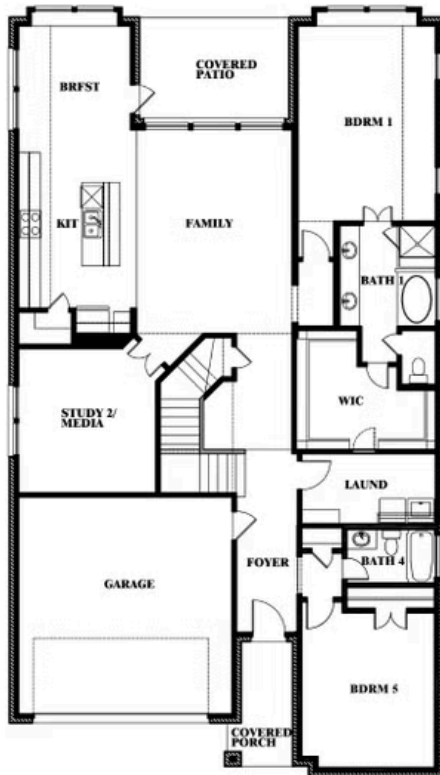
MCKINNEY, TX 75071

ROSE II FLOOR PLAN

ROSE II FLOOR PLAN WITH OPTIONAL BED & BATH AT STUDY



Rose II Opt. Bed & Bath at Study



This brochure is for general informational purposes and is to be used as a guide only. Changes may be made during the development process and floorplans, dimensions, fixtures, fittings, finishes and specifications are subject to change without notice. Window placement, balcony configuration, wardrobe sizes and living areas may vary slightly within each plan type. EQUAL HOUSING OPPORTUNITY

