

# Violet III

CLASSIC SERIES

HOMES FROM  
**\$None**

## WILLOW WOOD

5709 CYPRESSWOOD LANE, MCKINNEY, TX 75071

**2,628**  
SQUARE FEET

**4**  
BEDROOMS

**4.5**  
BATHROOMS

**2**  
CAR GARAGE



**ELEVATION A**



**ELEVATION AS**



**ELEVATION B**



**ELEVATION C**



**ELEVATION D**

# Violet III

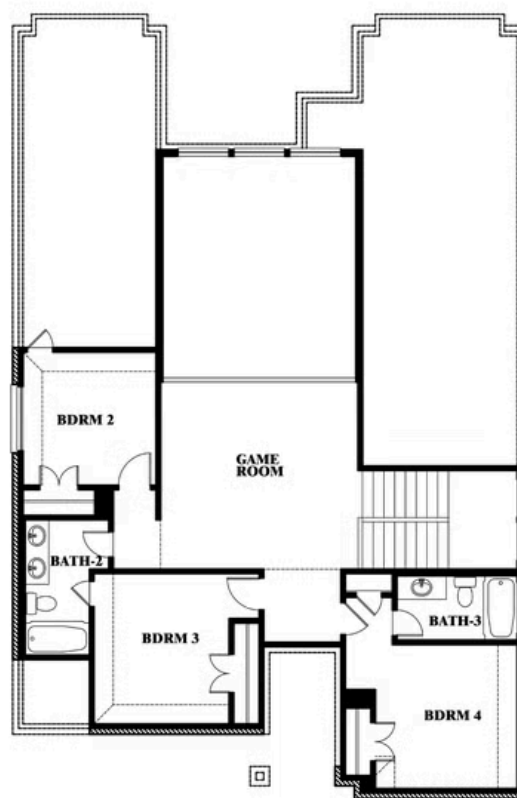
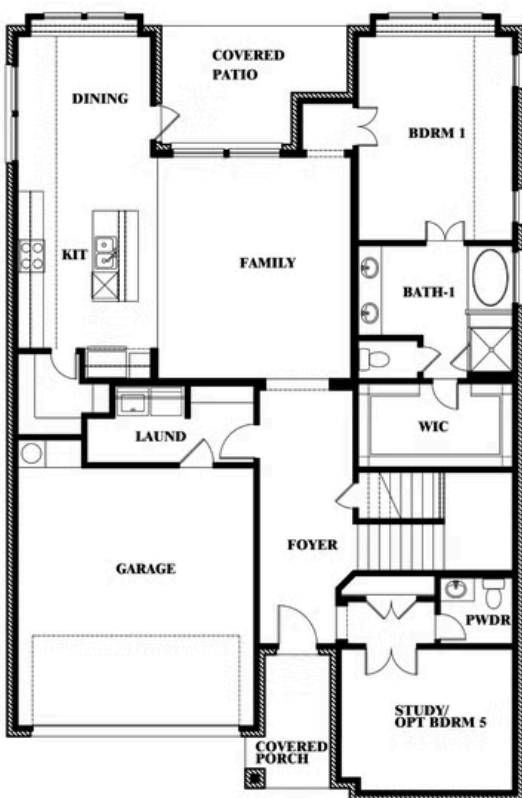
## VIOLET III FLOOR PLAN

## WILLOW WOOD

5709 CYPRESSWOOD LANE, MCKINNEY, TX 75071



## Violet III



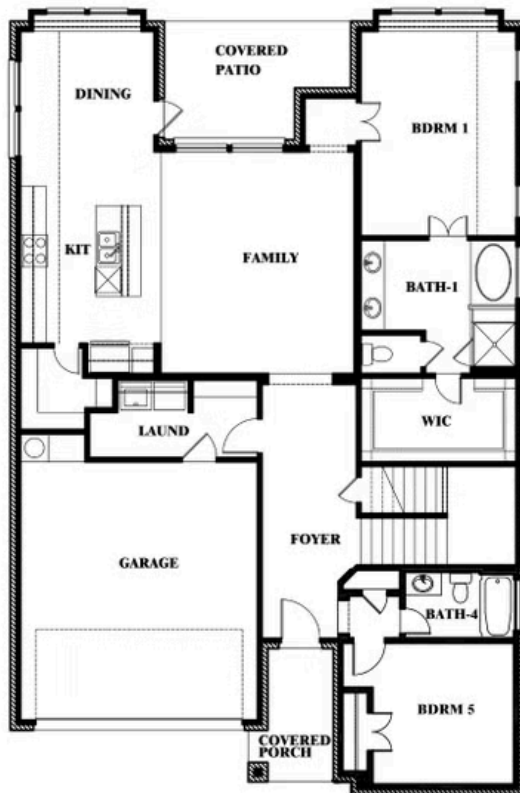
This brochure is for general informational purposes and is to be used as a guide only. Changes may be made during the development process and floorplans, dimensions, fixtures, fittings, finishes and specifications are subject to change without notice. Window placement, balcony configuration, wardrobe sizes and living areas may vary slightly within each plan type. EQUAL HOUSING OPPORTUNITY

# Violet III

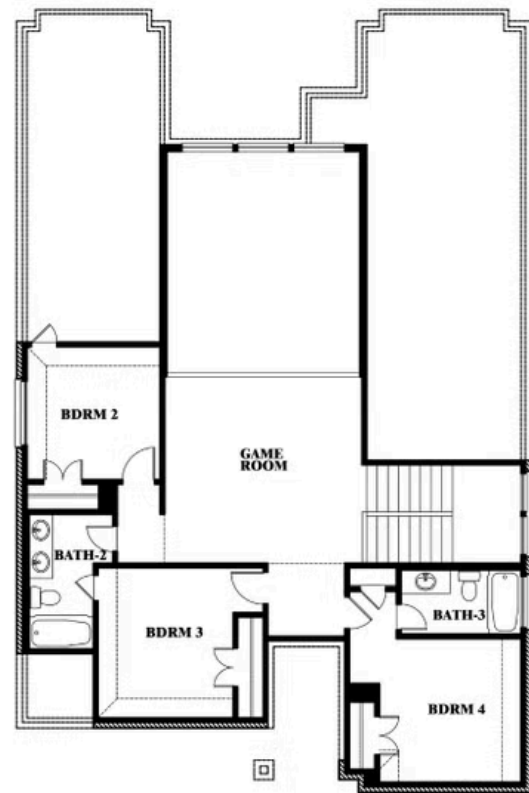
## WILLOW WOOD

5709 CYPRESSWOOD LANE, MCKINNEY, TX 75071

### VIOLET III FLOOR PLAN WITH BEDROOM AT STUDY



### Violet III Opt. Bed 5 & Bath 4 at Study



This brochure is for general informational purposes and is to be used as a guide only. Changes may be made during the development process and floorplans, dimensions, fixtures, fittings, finishes and specifications are subject to change without notice. Window placement, balcony configuration, wardrobe sizes and living areas may vary slightly within each plan type. EQUAL HOUSING OPPORTUNITY