



5641 Rutherford Drive

MIDLOTHIAN, TX 76065**HAYES CROSSING****CAROLINA IV SIDE ENTRY FLOOR PLAN****3270**
SQUARE FEET**4**
BEDROOMS**3.0**
BATHROOMS**2**
CAR GARAGE

The Classic Series Carolina IV floor plan is a two-story home with four bedrooms, study and three bathrooms. Features of this plan include a rotunda entry, covered porch, formal dining, large family room, open kitchen with custom cabinets and island, a bedroom suite with walk-in closet and garden tub, an upstairs game room, media room and second bedroom suite. Contact us or visit our model home for more information about building this plan.



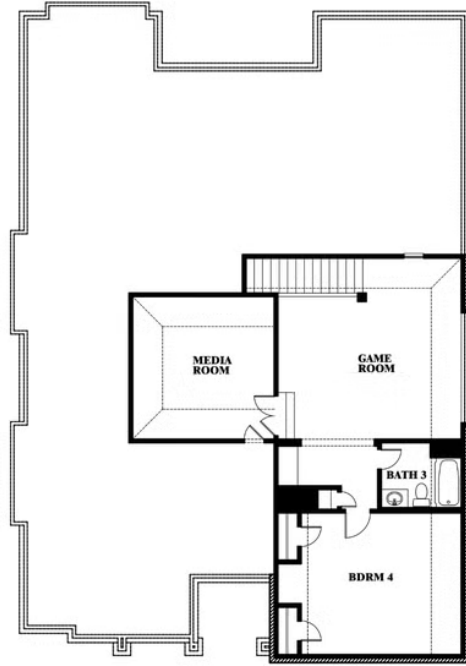
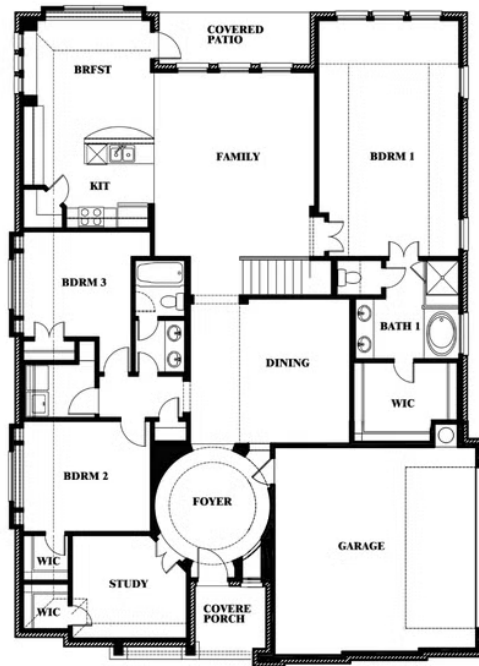
5641 Rutherford Drive

MIDLOTHIAN, TX 76065

CAROLINA IV SIDE ENTRY FLOOR PLAN



Carolina IV Side Entry



This brochure is for general informational purposes and is to be used as a guide only. Changes may be made during the development process and floorplans, dimensions, fixtures, fittings, finishes and specifications are subject to change without notice. Window placement, balcony configuration, wardrobe sizes and living areas may vary slightly within each plan type. EQUAL HOUSING OPPORTUNITY