



Magnolia III

CLASSIC SERIES**HOMES FROM
\$566,990****MOCKINGBIRD HEIGHTS CLASSIC 60**

1134 S BLUEBIRD LANE, MIDLOTHIAN, TX 76065

3,759
SQUARE FEET**5**
BEDROOMS**3.5**
BATHROOMS**2**
CAR GARAGE

Document generated Feb 8, 2026. Prices, plans, square footage, features, amenities and materials are subject to change at any time without notice and vary among communities. Listed prices are for informational purposes only, are not binding, and do not create any contractual obligation(s). The price of any home is dependent on numerous factors, all of which are unique to a specific home, and is not guaranteed until specified in a binding contract. Pricing of elevations and additional optional beds/baths varies per plan. Some plans require a premium homesite. Renderings of homes are artist concepts and may not reflect exact colors and materials. Verify current tax rates & jurisdictions with the appropriate taxing authority.



Magnolia III

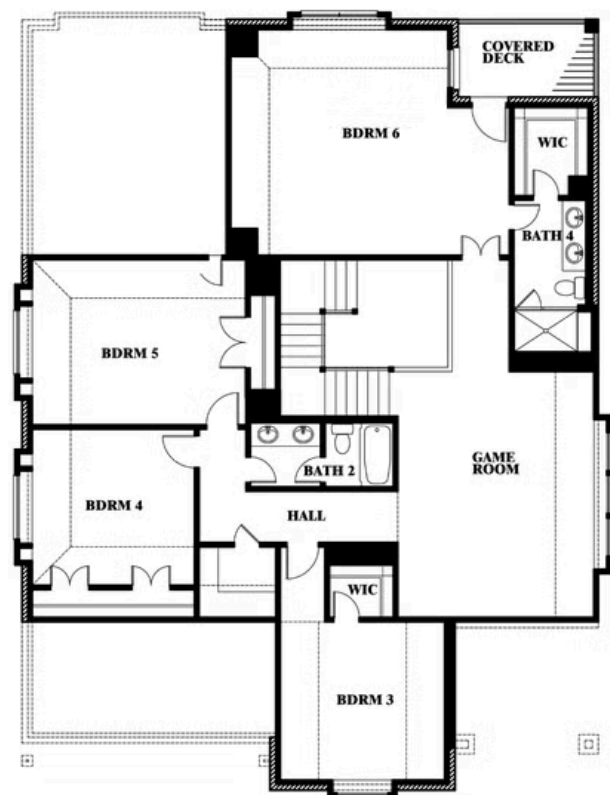
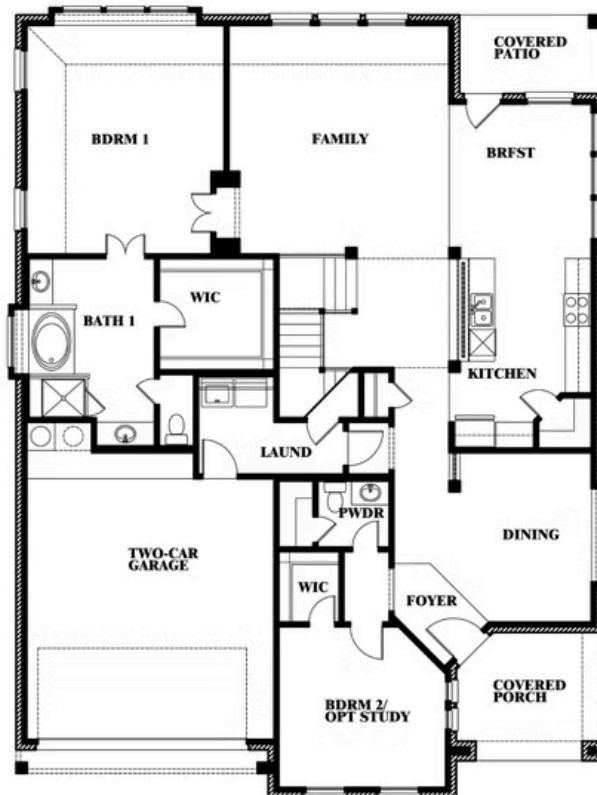
MAGNOLIA III FLOOR PLAN

MOCKINGBIRD HEIGHTS CLASSIC 60

1134 S BLUEBIRD LANE, MIDLOTHIAN, TX 76065



Magnolia III



This brochure is for general informational purposes and is to be used as a guide only. Changes may be made during the development process and floorplans, dimensions, fixtures, fittings, finishes and specifications are subject to change without notice. Window placement, balcony configuration, wardrobe sizes and living areas may vary slightly within each plan type. EQUAL HOUSING OPPORTUNITY





Magnolia III

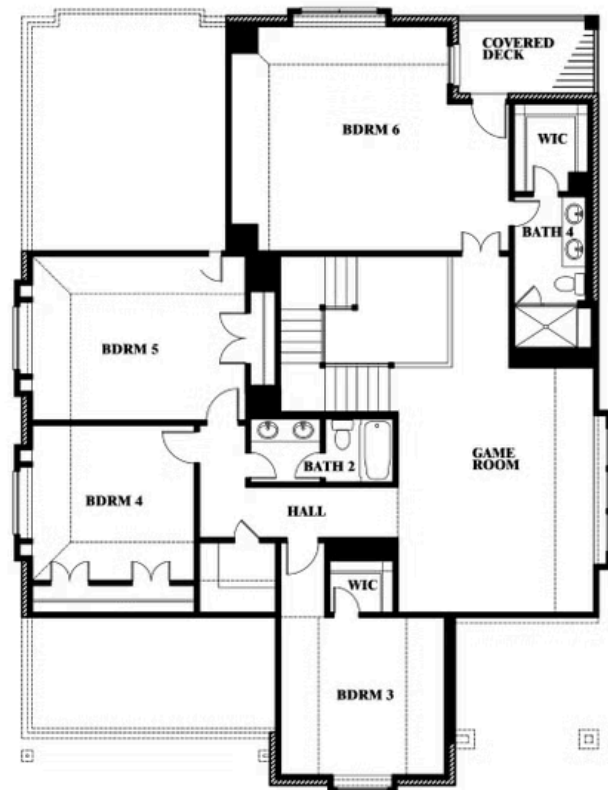
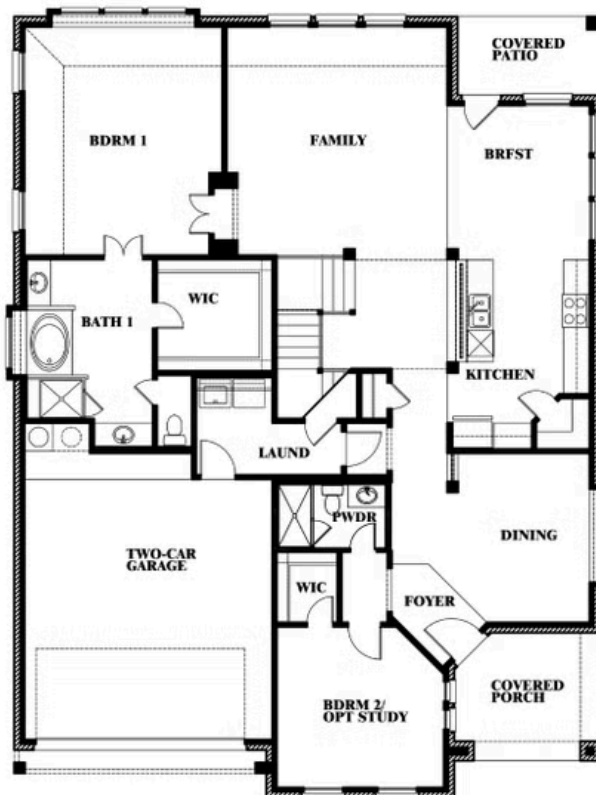
**MAGNOLIA III FLOOR PLAN WITH OPTIONAL SHOWER
AT POWDER**

MOCKINGBIRD HEIGHTS CLASSIC 60

1134 S BLUEBIRD LANE, MIDLOTHIAN, TX 76065



Magnolia III Opt. Shower at Powder



This brochure is for general informational purposes and is to be used as a guide only. Changes may be made during the development process and floorplans, dimensions, fixtures, fittings, finishes and specifications are subject to change without notice. Window placement, balcony configuration, wardrobe sizes and living areas may vary slightly within each plan type. **EQUAL HOUSING OPPORTUNITY**



Document generated Feb 8, 2026. Prices, plans, square footage, features, amenities and materials are subject to change at any time without notice and vary among communities. Listed prices are for informational purposes only, are not binding, and do not create any contractual obligation(s). The price of any home is dependent on numerous factors, all of which are unique to a specific home, and is not guaranteed until specified in a binding contract. Pricing of elevations and additional optional beds/baths varies per plan. Some plans require a premium homesite. Renderings of homes are artist concepts and may not reflect exact colors and materials. Verify current tax rates & jurisdictions with the appropriate taxing authority.



Magnolia III

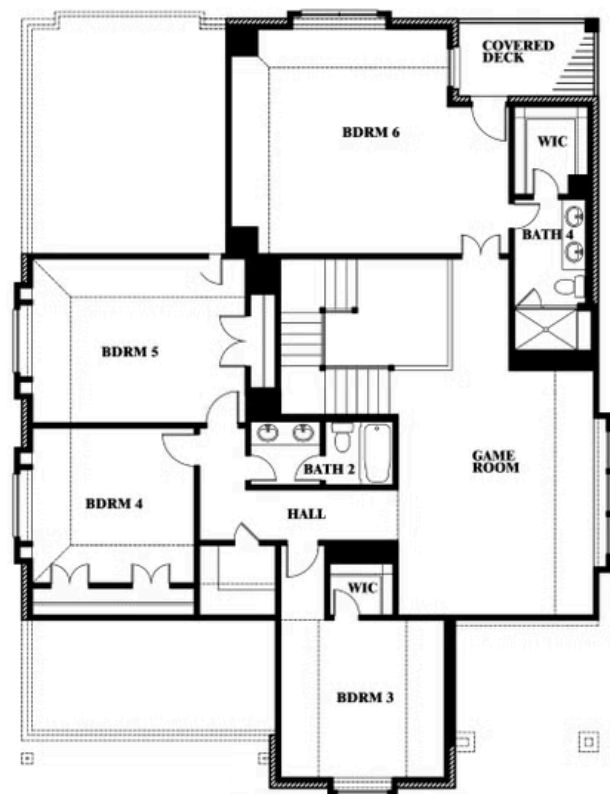
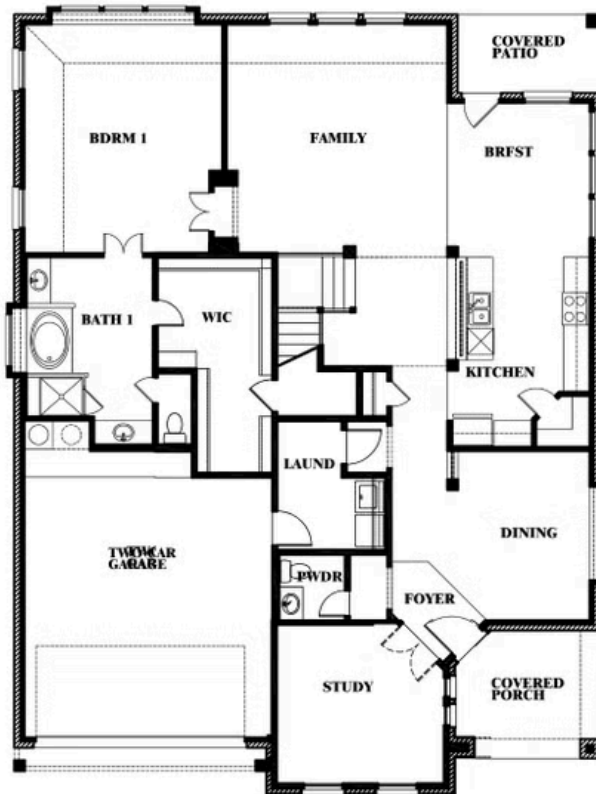
MAGNOLIA III FLOOR PLAN WITH OPTIONAL MUD ROOM

MOCKINGBIRD HEIGHTS CLASSIC 60

1134 S BLUEBIRD LANE, MIDLOTHIAN, TX 76065



Magnolia III Opt. Mud Room & Ext. Primary Closet



This brochure is for general informational purposes and is to be used as a guide only. Changes may be made during the development process and floorplans, dimensions, fixtures, fittings, finishes and specifications are subject to change without notice. Window placement, balcony configuration, wardrobe sizes and living areas may vary slightly within each plan type. **EQUAL HOUSING OPPORTUNITY**





Magnolia III

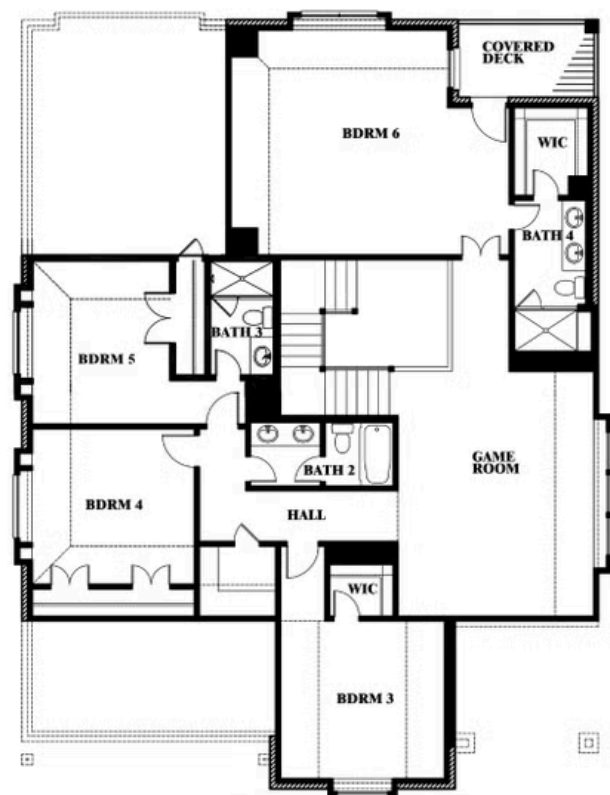
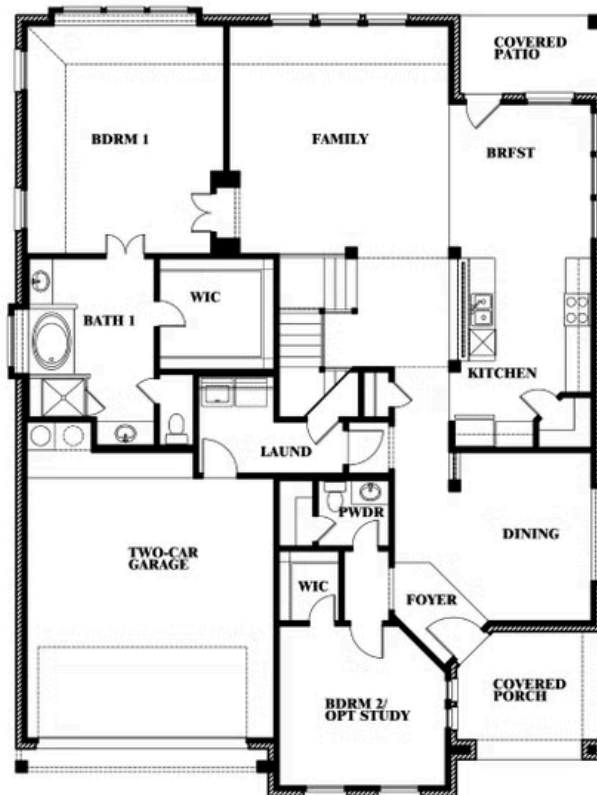
MOCKINGBIRD HEIGHTS CLASSIC 60

1134 S BLUEBIRD LANE, MIDLOTHIAN, TX 76065

MAGNOLIA III FLOOR PLAN WITH OPTIONAL BATH 3



Magnolia III Opt. Bath 3 at Bed 5



This brochure is for general informational purposes and is to be used as a guide only. Changes may be made during the development process and floorplans, dimensions, fixtures, fittings, finishes and specifications are subject to change without notice. Window placement, balcony configuration, wardrobe sizes and living areas may vary slightly within each plan type. EQUAL HOUSING OPPORTUNITY

