



# Magnolia

CLASSIC SERIES

## RIDGEPOINT

817 RUSTY RUN DRIVE, MIDLOTHIAN, TX 76065

HOMES FROM  
**\$512,990**

**3,187**  
SQUARE FEET

**4**  
BEDROOMS

**2.5**  
BATHROOMS

**2**  
CAR GARAGE



**ELEVATION D**



**ELEVATION C**

ELEVATION C



**ELEVATION AS**

ELEVATION AS



**ELEVATION CS**

ELEVATION CS



**ELEVATION A**

ELEVATION A



**ELEVATION F**

ELEVATION F





# Magnolia

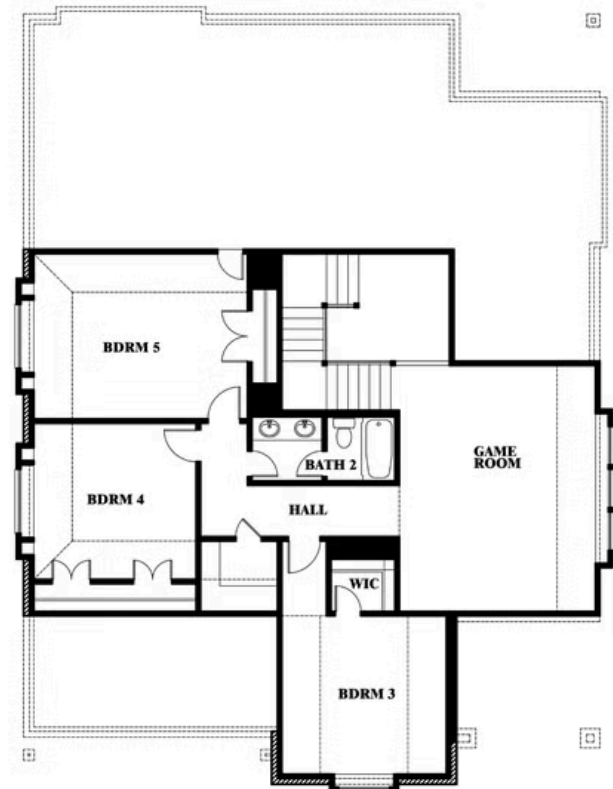
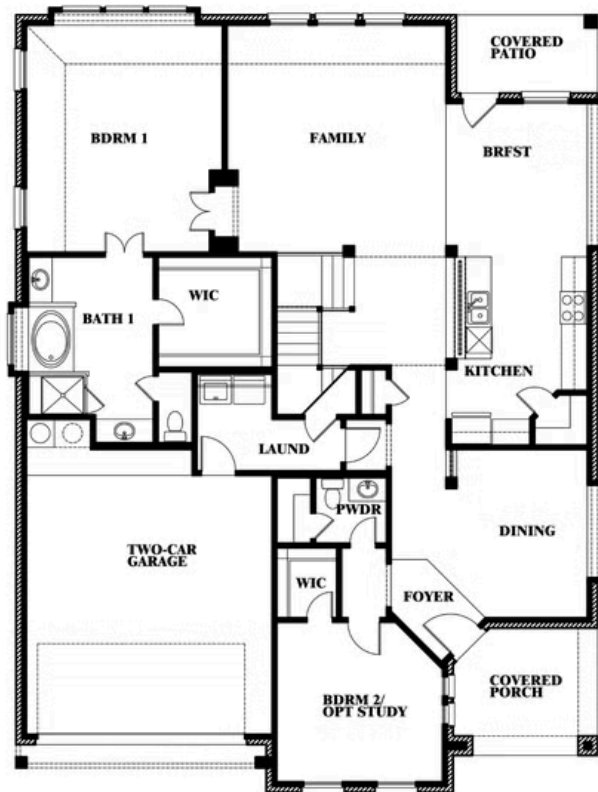
## MAGNOLIA FLOOR PLAN

## RIDGEPOINT

817 RUSTY RUN DRIVE, MIDLOTHIAN, TX 76065



## Magnolia



This brochure is for general informational purposes and is to be used as a guide only. Changes may be made during the development process and floorplans, dimensions, fixtures, fittings, finishes and specifications are subject to change without notice. Window placement, balcony configuration, wardrobe sizes and living areas may vary slightly within each plan type. EQUAL HOUSING OPPORTUNITY



# Magnolia

## RIDGEPOINT

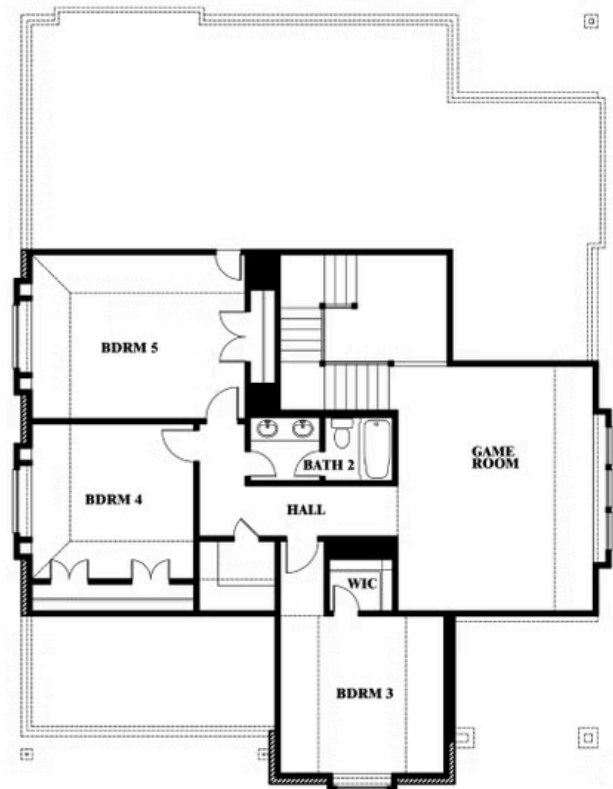
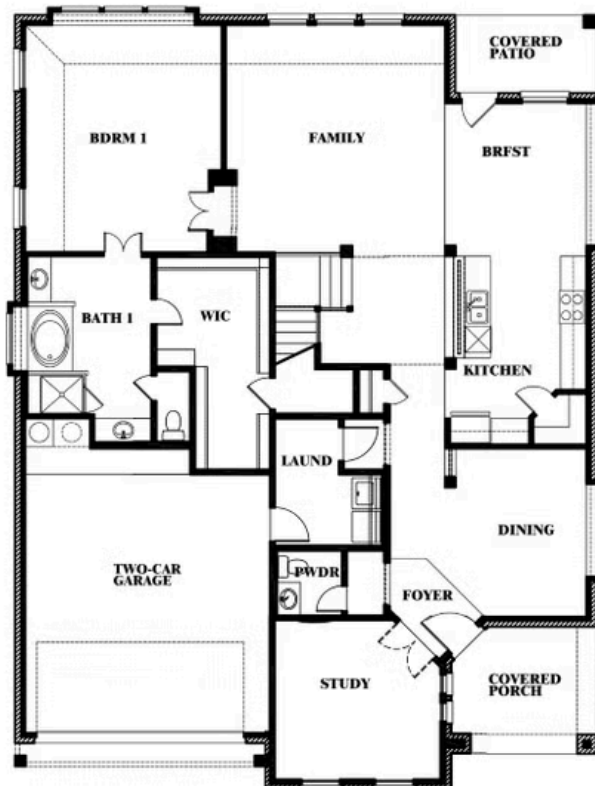
817 RUSTY RUN DRIVE, MIDLOTHIAN, TX 76065

### MAGNOLIA FLOOR PLAN WITH OPTIONAL MUD ROOM



## Magnolia

Opt. Mud Room & Ext. Primary Closet



This brochure is for general informational purposes and is to be used as a guide only. Changes may be made during the development process and floorplans, dimensions, fixtures, fittings, finishes and specifications are subject to change without notice. Window placement, balcony configuration, wardrobe sizes and living areas may vary slightly within each plan type. EQUAL HOUSING OPPORTUNITY





# Magnolia

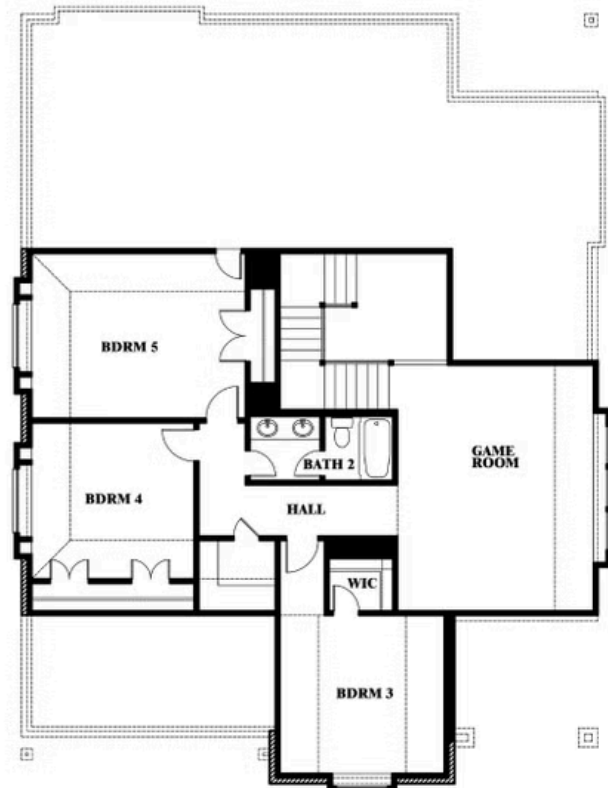
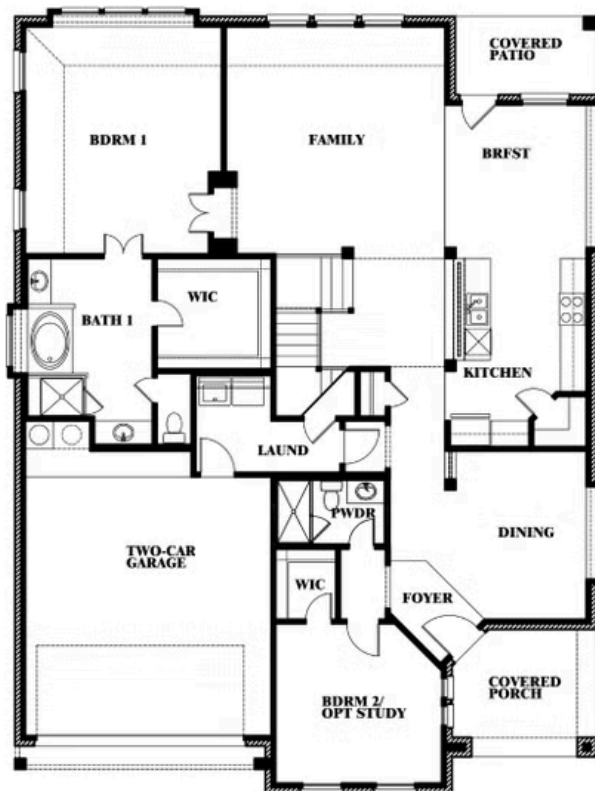
**MAGNOLIA FLOOR PLAN WITH OPTIONAL SHOWER AT POWDER**

## RIDGEPOINT

817 RUSTY RUN DRIVE, MIDLOTHIAN, TX 76065



## Magnolia Opt. Shower at Powder



This brochure is for general informational purposes and is to be used as a guide only. Changes may be made during the development process and floorplans, dimensions, fixtures, fittings, finishes and specifications are subject to change without notice. Window placement, balcony configuration, wardrobe sizes and living areas may vary slightly within each plan type. EQUAL HOUSING OPPORTUNITY



Document generated Sep 6, 2025. Prices, plans, square footage, features and materials are subject to change at any time without notice and vary among communities. Listed prices are for informational purposes only, are not binding, and do not create any contractual obligation(s). The price of any home is dependent on numerous factors, all of which are unique to a specific home, and is not guaranteed until specified in a binding contract. Pricing of elevations and additional optional beds/baths vary per plan. Some plans require a premium homesite. Please ask the Community Manager for details. Renderings of homes are artist concepts and may not reflect exact colors and materials.



# Magnolia

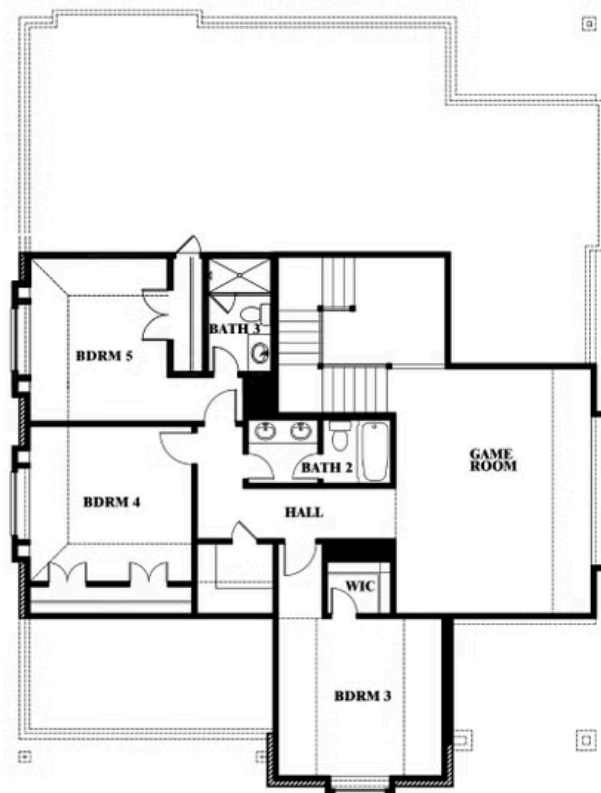
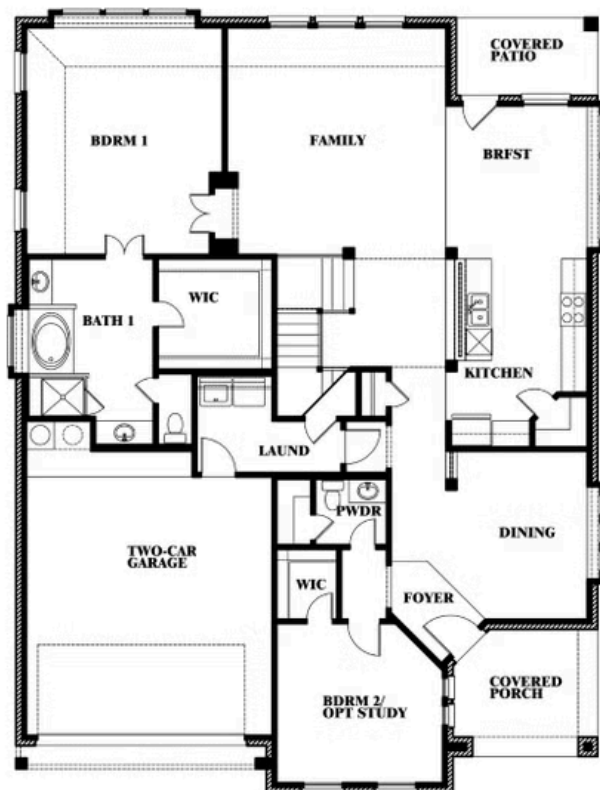
## RIDGEPOINT

817 RUSTY RUN DRIVE, MIDLOTHIAN, TX 76065

### MAGNOLIA FLOOR PLAN WITH OPTIONAL BATH 3



## Magnolia Opt. Bath 3 at Bed 5



This brochure is for general informational purposes and is to be used as a guide only. Changes may be made during the development process and floorplans, dimensions, fixtures, fittings, finishes and specifications are subject to change without notice. Window placement, balcony configuration, wardrobe sizes and living areas may vary slightly within each plan type. EQUAL HOUSING OPPORTUNITY



Document generated Sep 6, 2025. Prices, plans, square footage, features and materials are subject to change at any time without notice and vary among communities. Listed prices are for informational purposes only, are not binding, and do not create any contractual obligation(s). The price of any home is dependent on numerous factors, all of which are unique to a specific home, and is not guaranteed until specified in a binding contract. Pricing of elevations and additional optional beds/baths vary per plan. Some plans require a premium homesite. Please ask the Community Manager for details. Renderings of homes are artist concepts and may not reflect exact colors and materials.