



# Primrose VI

CLASSIC SERIES

## RIDGEPOINT

4601 SADDLEHORN DRIVE, MIDLOTHIAN, TX 76065

HOMES FROM

**\$629,990**

**4,035**

SQUARE FEET

**5**

BEDROOMS

**4.5**

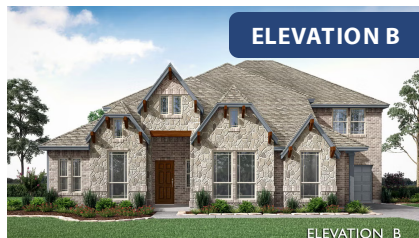
BATHROOMS

**3**

CAR GARAGE



**ELEVATION A**



**ELEVATION B**

ELEVATION B



**ELEVATION C**

ELEVATION C



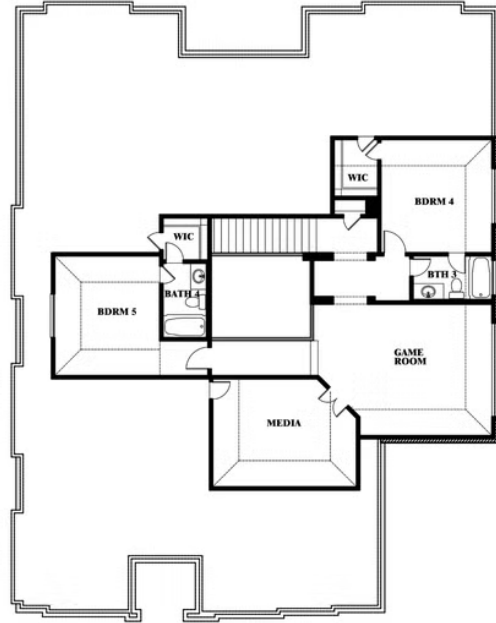
# Primrose VI

## RIDGEPOINT

4601 SADDLEHORN DRIVE, MIDLOTHIAN, TX 76065



## Primrose VI



This brochure is for general informational purposes and is to be used as a guide only. Changes may be made during the development process and floorplans, dimensions, fixtures, fittings, finishes and specifications are subject to change without notice. Window placement, balcony configuration, wardrobe sizes and living areas may vary slightly within each plan type. EQUAL HOUSING OPPORTUNITY