



1205 Terrain Rd

MIDLOTHIAN, TX 76065

BELLFLOWER II FLOOR PLAN

3,774 SQUARE FEET	5 BEDROOMS	4.5 BATHROOMS	2 CAR GARAGE
-----------------------------	----------------------	-------------------------	------------------------

VILLAGES OF WALNUT GROVE

MODEL HOME • 1205 TERRAIN RD | BELLFLOWER II

Model Home



The Bellflower II is a thoughtfully designed two-story home that balances open-concept living with flexible spaces to fit your lifestyle. With four spacious bedrooms, three and a half bathrooms, a dining room, game room, media room, and a dedicated study, this plan offers room to grow and the freedom to personalize each space.

Ranging from 3,774 to 3,785 square feet, the Bellflower II delivers generous living space across both levels, giving every member of the household room to relax and recharge.

At the heart of the home, an open kitchen and family room create a welcoming environment for everyday living and effortless entertaining. A private study near the entry provides a quiet retreat for work or creativity, while the formal dining room can be built as a media room - whatever suits your needs.

Upstairs, a spacious game room anchors the secondary bedrooms and offers even more flexibility. Choose to add an optional fifth bedroom—with or without a full bath—in place of the media room, perfect for guests or multi-generational living.

Designed with Bloomfield Homes' signature blend of function and style, the Bellflower II combines comfort, versatility, and timeless appeal—making it a home you'll love for years to come.



Document generated May 4, 2026. Prices, plans, square footage, features, amenities and materials are subject to change at any time without notice and vary among communities. Listed prices are for informational purposes only, are not binding, and do not create any contractual obligation(s). The price of any home is dependent on numerous factors, all of which are unique to a specific home, and is not guaranteed until specified in a binding contract. Pricing of elevations and additional optional beds/baths varies per plan. Some plans require a premium homesite. Renderings of homes are artist concepts and may not reflect exact colors and materials. Verify current tax rates & jurisdictions with the appropriate taxing authority.



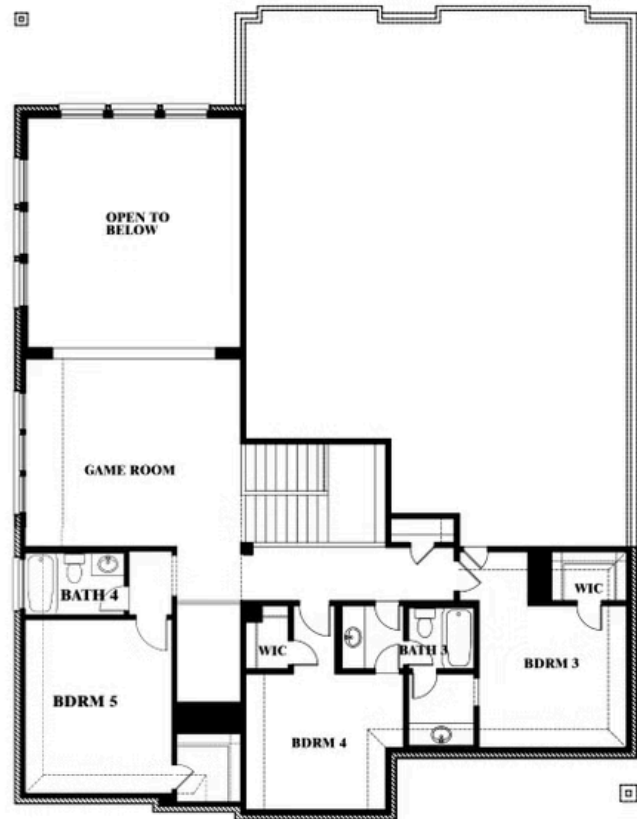
1205 Terrain Rd

MIDLOTHIAN, TX 76065

BELLFLOWER II FLOOR PLAN



Bellflower II
Opt. Bed 5/Bath 4 at Media



This brochure is for general informational purposes and is to be used as a guide only. Changes may be made during the development process and floorplans, dimensions, fixtures, fittings, finishes and specifications are subject to change without notice. Window placement, balcony configuration, wardrobe sizes and living areas may vary slightly within each plan type. EQUAL HOUSING OPPORTUNITY



Document generated May 4, 2026. Prices, plans, square footage, features, amenities and materials are subject to change at any time without notice and vary among communities. Listed prices are for informational purposes only, are not binding, and do not create any contractual obligation(s). The price of any home is dependent on numerous factors, all of which are unique to a specific home, and is not guaranteed until specified in a binding contract. Pricing of elevations and additional optional beds/baths varies per plan. Some plans require a premium homesite. Renderings of homes are artist concepts and may not reflect exact colors and materials. Verify current tax rates & jurisdictions with the appropriate taxing authority.