



1210 Summer Grove Drive

VILLAGES OF WALNUT GROVE
MIDLOTHIAN, TX 76065
PRICED AT
\$578,458
DAFFODIL FLOOR PLAN
\$535,000

2,979 SQUARE FEET	4 BEDROOMS	3.5 BATHROOMS	3 CAR GARAGE
-----------------------------	----------------------	-------------------------	------------------------

MODEL HOME • 1205 TERRAIN RD | BELLFLOWER II
Under Contract


Ready June 2026. This stunning home showcases the highly desired Daffodil floorplan with 4 bedrooms, 3.5 baths, and a spacious 3-car garage highlighted by beautiful cedar garage doors that elevate its curb appeal. The charm begins with the inviting brick front porch and continues through the custom 8-foot front door, setting a warm and welcoming tone the moment you arrive. Inside, the open-concept design offers an easy flow between living spaces, anchored by a breathtaking stone fireplace that rises from floor to ceiling. The kitchen is carefully crafted with upgrades like painted cabinets, matte black hardware, double ovens, a designer backsplash, pendant lights over the large island, a stylish glass pantry door, and under-cabinet lighting that enhances every inch. Quartz countertops extend through the kitchen and primary bath for a modern, polished look, while Bath 3 features durable granite and a convenient walk-in shower with a built-in seat - no tub - ideal for guests. The primary suite provides a peaceful retreat complete with a cozy window seat and a beautifully finished bathroom with a glass-enclosed shower and separate tub. The game room adds another versatile living area and features its own window seat, access to the backyard's covered patio, and a massive storage closet for off-season items! Additional thoughtful touches include gutters, blinds throughout, and a ceiling fan kit on the patio - perfect for quiet mornings or evenings spent outdoors. Every detail in this home was designed with comfort and style in mind, from the upgraded finishes to the functional layout. With its blend of modern features and inviting spaces, this home truly stands out. Visit Villages of Walnut Grove in Midlothian to explore this plan in person - open daily!



Document generated May 10, 2026. Prices, plans, square footage, features, amenities and materials are subject to change at any time without notice and vary among communities. Listed prices are for informational purposes only, are not binding, and do not create any contractual obligation(s). The price of any home is dependent on numerous factors, all of which are unique to a specific home, and is not guaranteed until specified in a binding contract. Pricing of elevations and additional optional beds/baths varies per plan. Some plans require a premium homesite. Renderings of homes are artist concepts and may not reflect exact colors and materials. Verify current tax rates & jurisdictions with the appropriate taxing authority.



1210 Summer Grove Drive

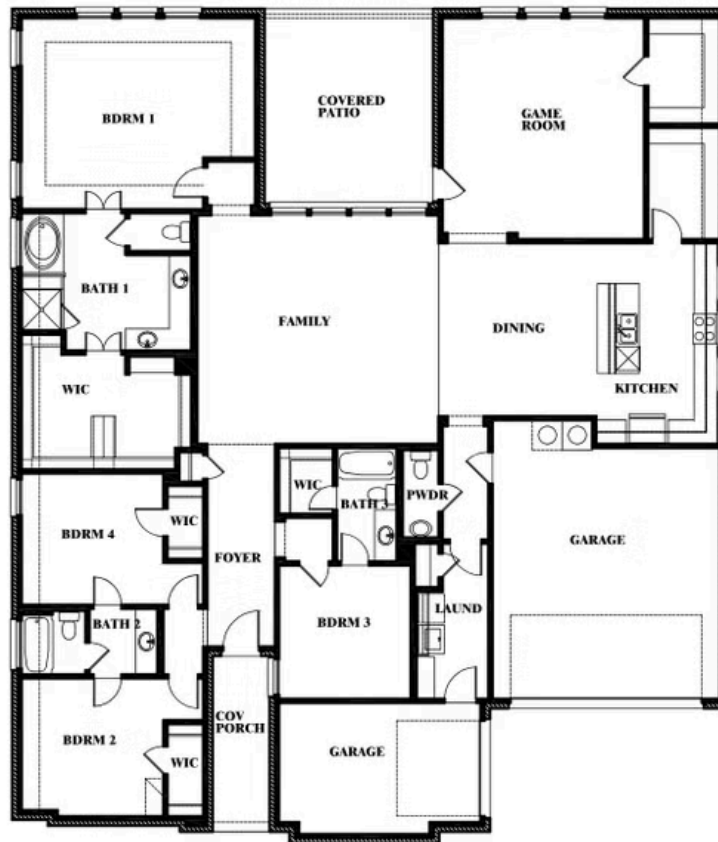
MIDLOTHIAN, TX 76065

DAFFODIL FLOOR PLAN

DAFFODIL FLOOR PLAN



Daffodil



This brochure is for general informational purposes and is to be used as a guide only. Changes may be made during the development process and floorplans, dimensions, fixtures, fittings, finishes and specifications are subject to change without notice. Window placement, balcony configuration, wardrobe sizes and living areas may vary slightly within each plan type. EQUAL HOUSING OPPORTUNITY.

