



Carolina IV

CLASSIC SERIES

CHAPARRAL PARK 50-55

HITCHING POST WAY, OAK POINT, TX 75068

HOMES FROM
\$494,990

3,280
SQUARE FEET

4
BEDROOMS

3.0
BATHROOMS

2
CAR GARAGE



ELEVATION D



ELEVATION A

ELEVATION A



ELEVATION AS

ELEVATION AS



ELEVATION C

ELEVATION C



ELEVATION E

ELEVATION E



ELEVATION F

ELEVATION F





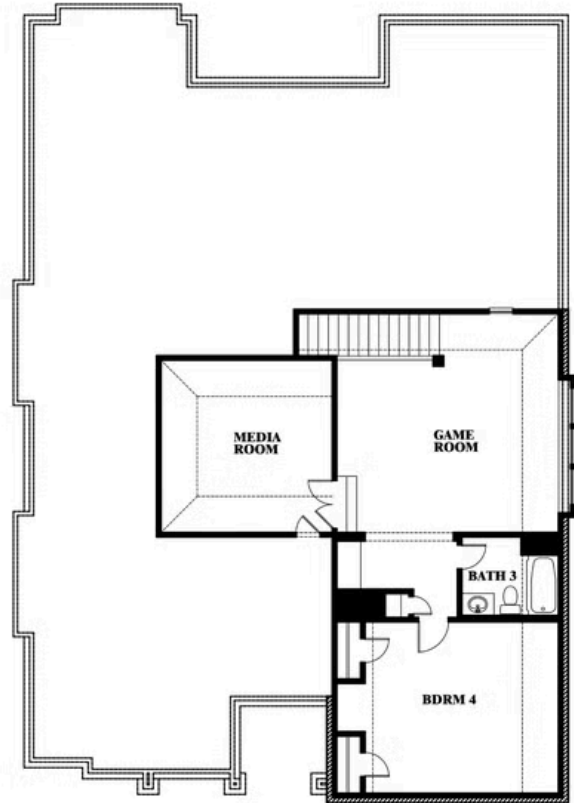
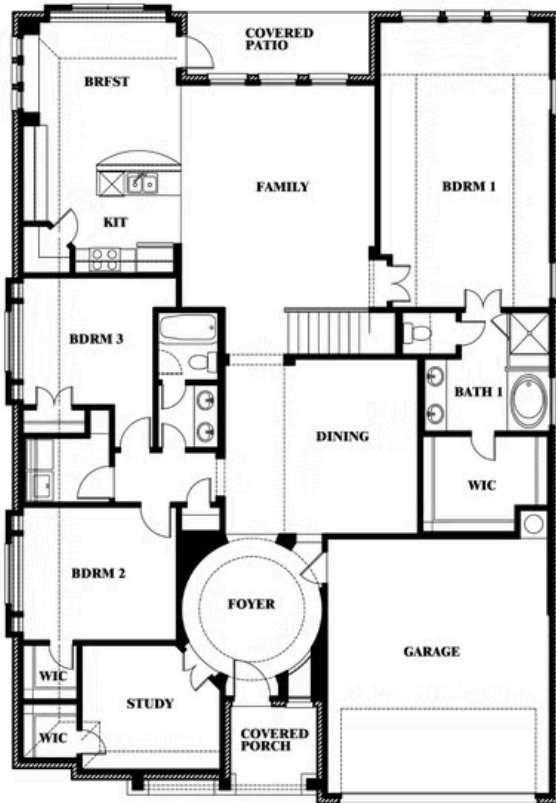
Carolina IV

CHAPARRAL PARK 50-55

HITCHING POST WAY, OAK POINT, TX 75068



Carolina IV



This brochure is for general informational purposes and is to be used as a guide only. Changes may be made during the development process and floorplans, dimensions, fixtures, fittings, finishes and specifications are subject to change without notice. Window placement, balcony configuration, wardrobe sizes and living areas may vary slightly within each plan type. **EQUAL HOUSING OPPORTUNITY**

