



Hawthorne

CLASSIC SERIES

HOMES FROM
\$439,990

CHAPARRAL PARK 50-55

HITCHING POST WAY, OAK POINT, TX 75068

2,235
SQUARE FEET

4
BEDROOMS

2.0
BATHROOMS

2
CAR GARAGE



ELEVATION A



ELEVATION B

ELEVATION B



ELEVATION C

ELEVATION C





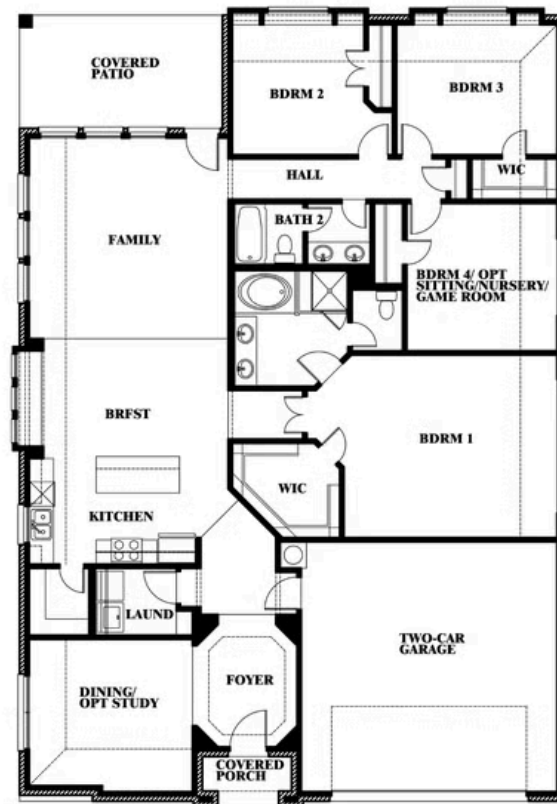
Hawthorne

CHAPARRAL PARK 50-55

HITCHING POST WAY, OAK POINT, TX 75068



Hawthorne



This brochure is for general informational purposes and is to be used as a guide only. Changes may be made during the development process and floorplans, dimensions, fixtures, fittings, finishes and specifications are subject to change without notice. Window placement, balcony configuration, wardrobe sizes and living areas may vary slightly within each plan type. EQUAL HOUSING OPPORTUNITY





Hawthorne

CHAPARRAL PARK 50-55

HITCHING POST WAY, OAK POINT, TX 75068



Hawthorne Opt. Deluxe Kitchen



This brochure is for general informational purposes and is to be used as a guide only. Changes may be made during the development process and floorplans, dimensions, fixtures, fittings, finishes and specifications are subject to change without notice. Window placement, balcony configuration, wardrobe sizes and living areas may vary slightly within each plan type. EQUAL HOUSING OPPORTUNITY

