



Hawthorne II

CLASSIC SERIES

CHAPARRAL PARK 50-55

HITCHING POST WAY, OAK POINT, TX 75068

HOMES FROM
\$469,990

2,752
SQUARE FEET

4
BEDROOMS

3.0
BATHROOMS

2
CAR GARAGE





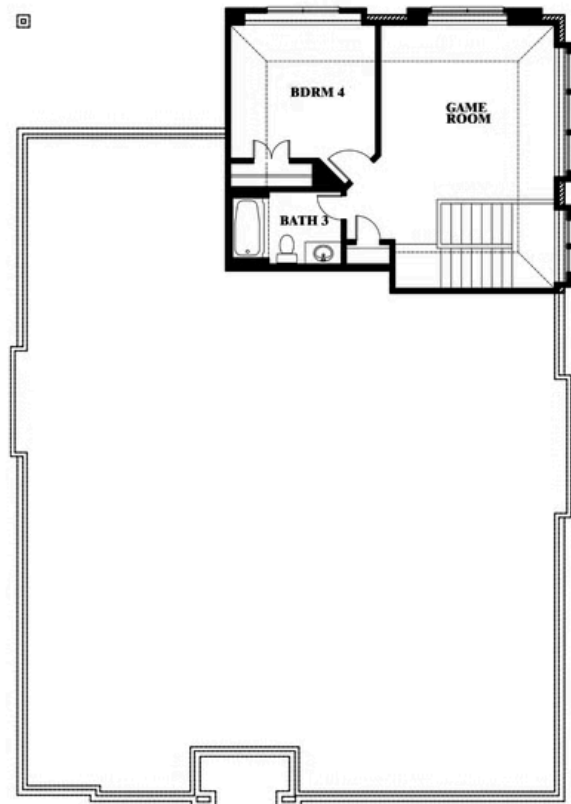
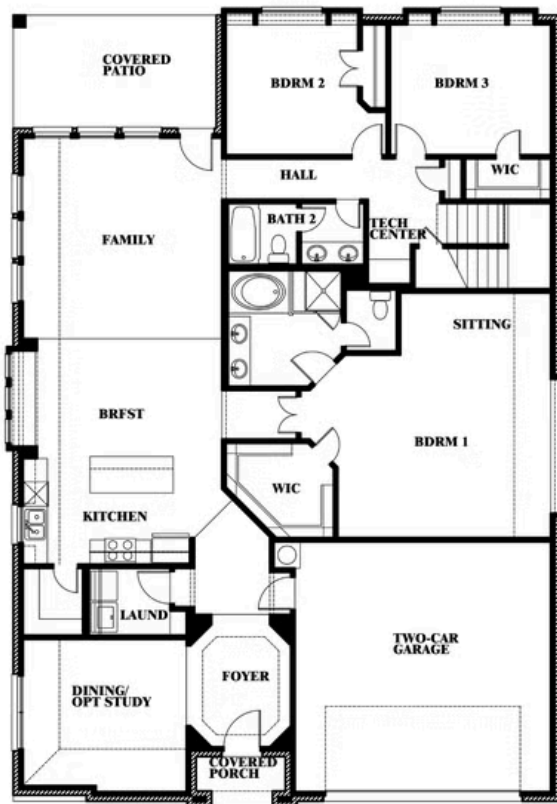
Hawthorne II

CHAPARRAL PARK 50-55

HITCHING POST WAY, OAK POINT, TX 75068



Hawthorne II



This brochure is for general informational purposes and is to be used as a guide only. Changes may be made during the development process and floorplans, dimensions, fixtures, fittings, finishes and specifications are subject to change without notice. Window placement, balcony configuration, wardrobe sizes and living areas may vary slightly within each plan type. **EQUAL HOUSING OPPORTUNITY**





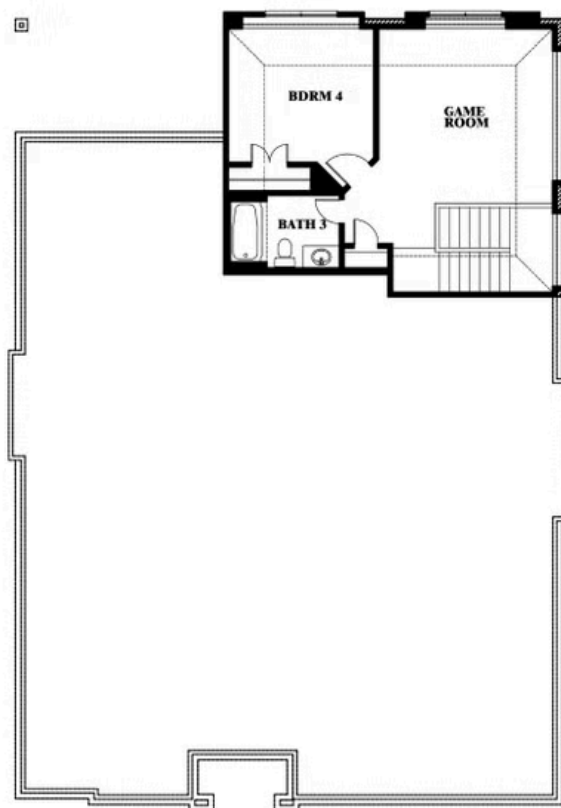
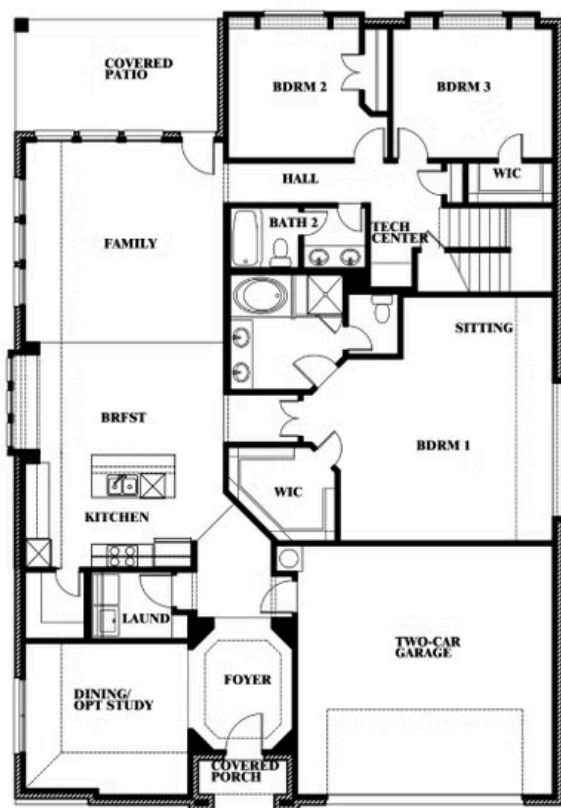
Hawthorne II

CHAPARRAL PARK 50-55

HITCHING POST WAY, OAK POINT, TX 75068



Hawthorne II *Opt. Deluxe Kitchen*



This brochure is for general informational purposes and is to be used as a guide only. Changes may be made during the development process and floorplans, dimensions, fixtures, fittings, finishes and specifications are subject to change without notice. Window placement, balcony configuration, wardrobe sizes and living areas may vary slightly within each plan type. EQUAL HOUSING OPPORTUNITY