



1152 Hitching Post Way

OAK POINT, TX 75068

PRICED AT

\$487,883

CHAPARRAL PARK 50-55

JASMINE FLOOR PLAN

2098

SQUARE FEET

4

BEDROOMS

3.0

BATHROOMS

2

CAR GARAGE

Under Construction



NEW! NEVER LIVED IN. Under construction, complete May 2026! Bloomfield Homes has the perfect single-story option for anyone looking in the Denton ISD-Lake Lewisville area- Stay close enough to commute, but feels like you've escaped the city! Our Jasmine floor plan is a transitional, open-concept design featuring 4 bedrooms and 3 baths. Full of windows, tall ceilings, and flexible space with designer finishes while facing towards the west. Laminate wood floors provide scratch-resistant beauty throughout the common areas, great for busy lives and pet parents! Upgrades continue with champagne-stained custom cabinetry topped with light granite countertops, versatile wall and floor tile selections in light neutral tones, Level 2 carpet in bedrooms, and 2-inch faux wood blinds already installed. The Deluxe Kitchen has stainless steel appliances built into custom cabinetry, including a gas cooktop situated between a vent hood and deep pot-and-pan drawers! Pendant lights above the island and undercabinet lighting add warmth and depth. The Primary Suite is privately located at the back of the home, offering a quiet retreat with a spacious walk-in closet, dual sinks, a soaking tub, and a separate shower with bench seat. 3 additional bedrooms are thoughtfully arranged with access to 2 full secondary baths, providing flexibility for guests, work, or play. Outside, enjoy a covered patio with a gas stub for easy outdoor cooking as you look out over your privately fenced yard! Full gutters, a tankless water heater, energy-efficient elements, and an 8' upgraded front door - all on a fully landscaped, west-facing lot in Chaparral Park. Come see what makes this Jasmine stand out from the rest!





1152 Hitching Post Way

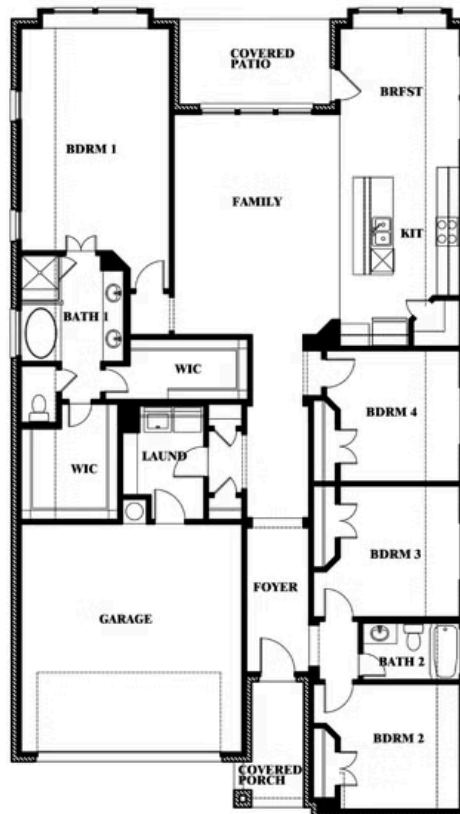
OAK POINT, TX 75068

JASMINE FLOOR PLAN

JASMINE FLOOR PLAN



Jasmine



This brochure is for general informational purposes and is to be used as a guide only. Changes may be made during the development process and floorplans, dimensions, fixtures, fittings, finishes and specifications are subject to change without notice. Window placement, balcony configuration, wardrobe sizes and living areas may vary slightly within each plan type. EQUAL HOUSING OPPORTUNITY





1152 Hitching Post Way

OAK POINT, TX 75068

JASMINE FLOOR PLAN

JASMINE FLOOR PLAN WITH OPTIONAL STUDY



Jasmine
Opt. Study at Bed 4



This brochure is for general informational purposes and is to be used as a guide only. Changes may be made during the development process and floorplans, dimensions, fixtures, fittings, finishes and specifications are subject to change without notice. Window placement, balcony configuration, wardrobe sizes and living areas may vary slightly within each plan type. EQUAL HOUSING OPPORTUNITY





1152 Hitching Post Way

OAK POINT, TX 75068

JASMINE FLOOR PLAN

JASMINE FLOOR PLAN WITH OPTIONAL POWDER



Jasmine
Opt. Powder at Closet



This brochure is for general informational purposes and is to be used as a guide only. Changes may be made during the development process and floorplans, dimensions, fixtures, fittings, finishes and specifications are subject to change without notice. Window placement, balcony configuration, wardrobe sizes and living areas may vary slightly within each plan type. **EQUAL HOUSING OPPORTUNITY**



Document generated Feb 19, 2026. Prices, plans, square footage, features, amenities and materials are subject to change at any time without notice and vary among communities. Listed prices are for informational purposes only, are not binding, and do not create any contractual obligation(s). The price of any home is dependent on numerous factors, all of which are unique to a specific home, and is not guaranteed until specified in a binding contract. Pricing of elevations and additional optional beds/baths varies per plan. Some plans require a premium homesite. Renderings of homes are artist concepts and may not reflect exact colors and materials. Verify current tax rates & jurisdictions with the appropriate taxing authority.



1152 Hitching Post Way

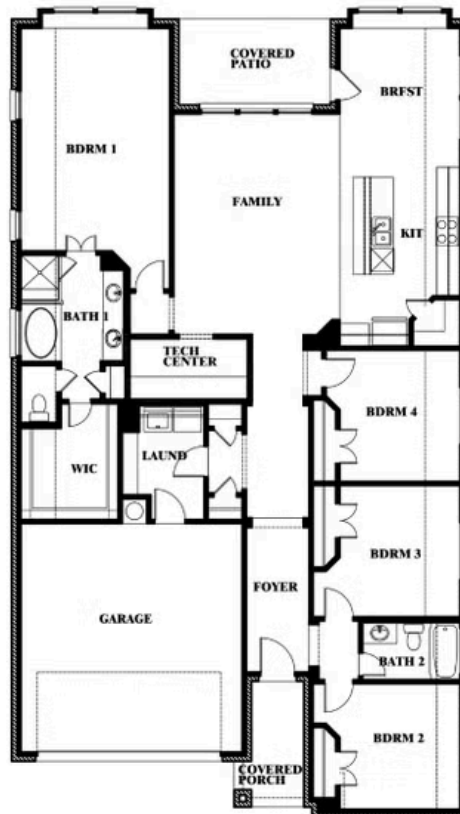
OAK POINT, TX 75068

JASMINE FLOOR PLAN

JASMINE FLOOR PLAN WITH OPTIONAL TECH CENTER



Jasmine
Opt. Tech Center at Closet



This brochure is for general informational purposes and is to be used as a guide only. Changes may be made during the development process and floorplans, dimensions, fixtures, fittings, finishes and specifications are subject to change without notice. Window placement, balcony configuration, wardrobe sizes and living areas may vary slightly within each plan type. EQUAL HOUSING OPPORTUNITY





1152 Hitching Post Way

OAK POINT, TX 75068

JASMINE FLOOR PLAN

JASMINE FLOOR PLAN WITH OPTIONAL BATH 3



Jasmine
Opt. Bath 3 at Closet



This brochure is for general informational purposes and is to be used as a guide only. Changes may be made during the development process and floorplans, dimensions, fixtures, fittings, finishes and specifications are subject to change without notice. Window placement, balcony configuration, wardrobe sizes and living areas may vary slightly within each plan type. EQUAL HOUSING OPPORTUNITY

