



Rose III

CLASSIC SERIES

CHAPARRAL PARK 50-55

HITCHING POST WAY, OAK POINT, TX 75068

HOMES FROM
\$516,990

3,557
SQUARE FEET

5
BEDROOMS

3.5
BATHROOMS

2
CAR GARAGE



ELEVATION A



ELEVATION AS

ELEVATION AS



ELEVATION B

ELEVATION B



ELEVATION C

ELEVATION C



ELEVATION D

ELEVATION D





Rose III

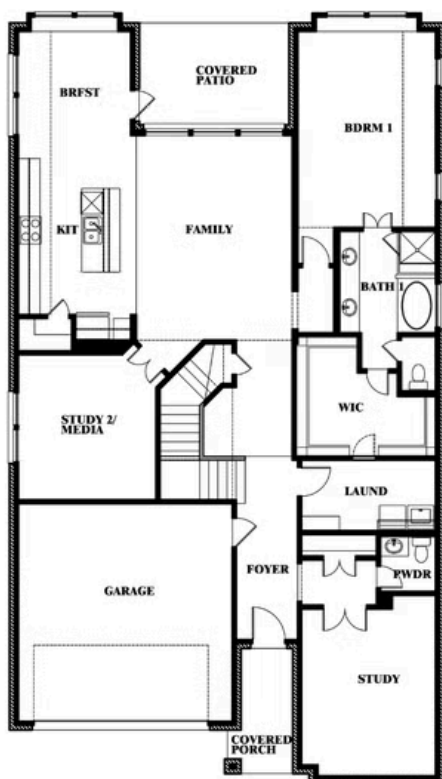
ROSE III FLOOR PLAN

CHAPARRAL PARK 50-55

HITCHING POST WAY, OAK POINT, TX 75068



Rose III



This brochure is for general informational purposes and is to be used as a guide only. Changes may be made during the development process and floorplans, dimensions, fixtures, fittings, finishes and specifications are subject to change without notice. Window placement, balcony configuration, wardrobe sizes and living areas may vary slightly within each plan type. EQUAL HOUSING OPPORTUNITY





Rose III

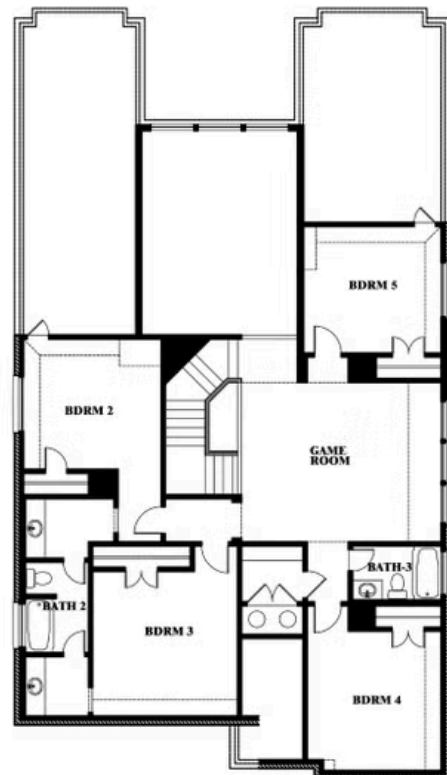
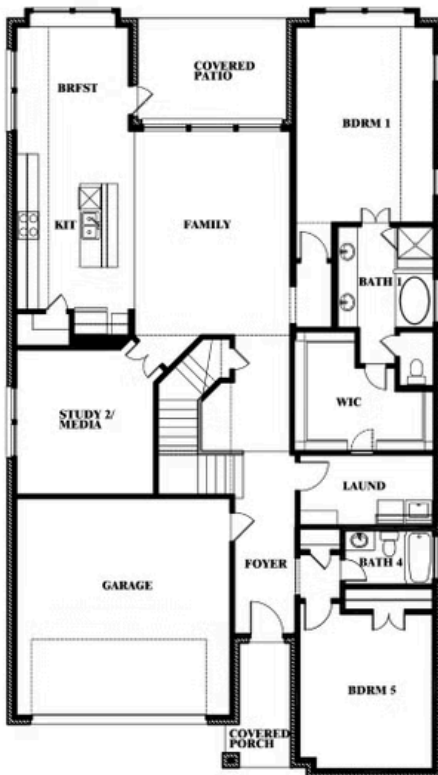
ROSE III FLOOR PLAN WITH OPTIONAL BED & BATH AT STUDY

CHAPARRAL PARK 50-55

HITCHING POST WAY, OAK POINT, TX 75068



Rose III
Opt. Bed & Bath at Study



This brochure is for general informational purposes and is to be used as a guide only. Changes may be made during the development process and floorplans, dimensions, fixtures, fittings, finishes and specifications are subject to change without notice. Window placement, balcony configuration, wardrobe sizes and living areas may vary slightly within each plan type. EQUAL HOUSING OPPORTUNITY