



1144 Hitching Post Way

OAK POINT, TX 75068

CHAPARRAL PARK 50-55

VIOLET IV FLOOR PLAN

PRICED AT

\$584,989

2876

SQUARE FEET

5

BEDROOMS

4.0

BATHROOMS

2

CAR GARAGE

Under Construction



NEW! NEVER LIVED IN. Expected to finish May 2026. Bloomfield Homes is building our Violet IV floor plan in a modern brick exterior with 5 bedrooms, 4 baths, and a deep 2.5-car garage for storage space or large vehicle. One of the first homes in our new Chaparral Park community located minutes from Lake Lewisville, Denton ISD schools, local wineries, art galleries, and great local cuisine, along with membership opportunities at the Dallas Corinthian Yacht Club and Prestonwood Polo Club! This two-story home has a contemporary, open-concept family room filled with natural light and lined with RevWood floors that stand up to busy lives and pet friends. Gorgeous picture windows keep your backyard and covered rear patio perfectly framed whether you're working at the kitchen island, taking a break on the window seat in the dining nook, or enjoying the warmth from the gas logs at the polished tile-to-ceiling fireplace finished with a box mantel. There's so much to love in the kitchen - among Dirftwood Shaker cabinets and Level 5 quartz you'll find a 5-burner gas cooktop below a wood vent hood, pot and pan drawers, trash-pull out drawer, oven-microwave cabinet, undercabinet and pendant lighting, a single-bowl sink with a Delta faucet to easily clean larger cookware, and designer mosaic backsplash. All the half walls are replaced with modern metal stair railing, opening up both levels for a truly custom Violet IV experience! Other thoughtful additions include a downstairs guest suite, flat screen outlets (primary and family room), a gas drop on the patio, 2-inch faux wood blinds, Level 4 granite surfaces in every bath, double doors at the media room, 220-30 AMP plug in the garage, gutters, exterior lighting, bricked front porch, and a custom 8' front door. Don't forget to ask about Bloomfield's energy-efficient elements and builder warranty! Call Bloomfield Homes to find out more.





1144 Hitching Post Way

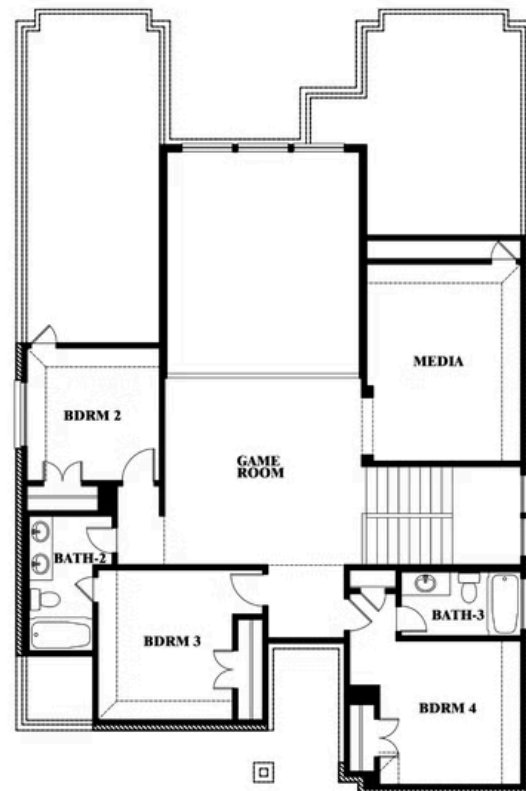
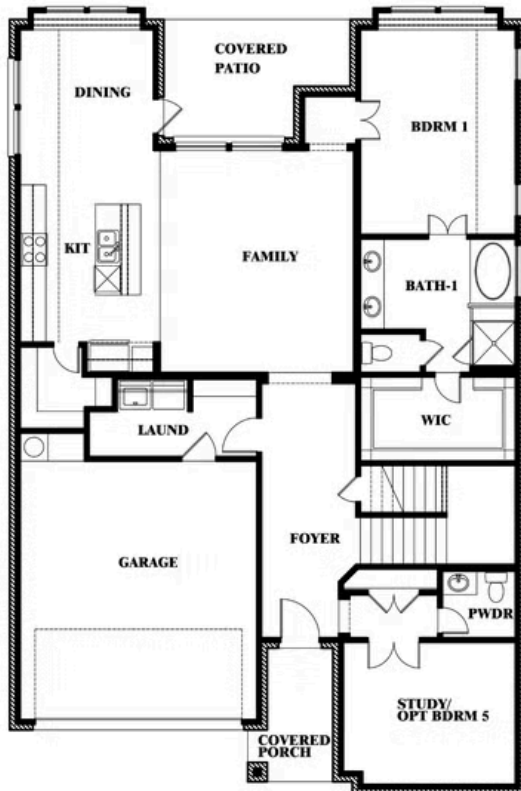
OAK POINT, TX 75068

VIOLET IV FLOOR PLAN

VIOLET IV FLOOR PLAN



Violet IV



This brochure is for general informational purposes and is to be used as a guide only. Changes may be made during the development process and floorplans, dimensions, fixtures, fittings, finishes and specifications are subject to change without notice. Window placement, balcony configuration, wardrobe sizes and living areas may vary slightly within each plan type. **EQUAL HOUSING OPPORTUNITY**





1144 Hitching Post Way

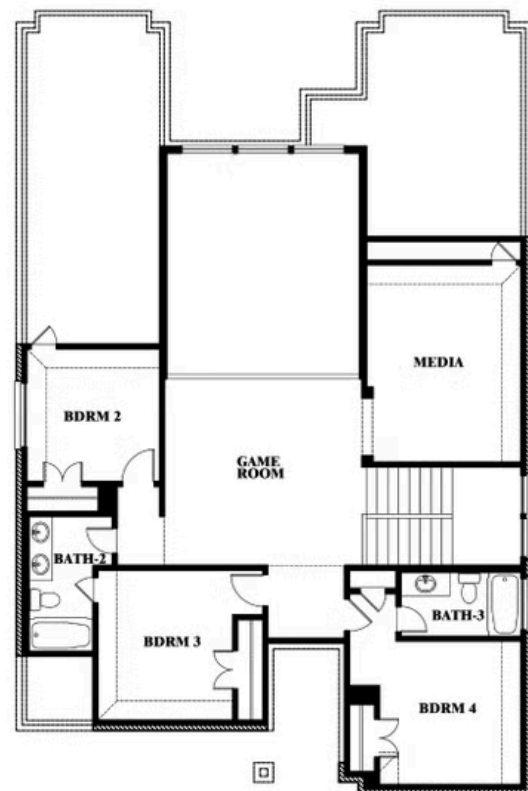
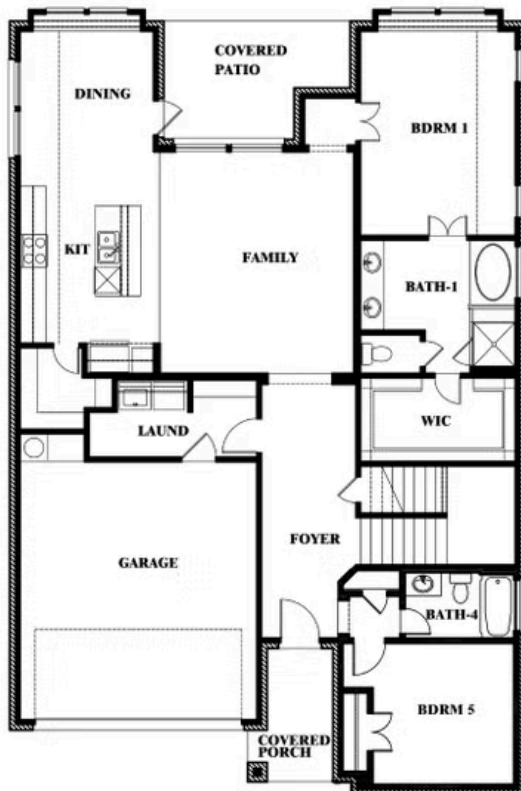
OAK POINT, TX 75068

VIOLET IV FLOOR PLAN

VIOLET IV FLOOR PLAN WITH OPTIONAL BEDROOM AT STUDY



Violet IV Opt. Bed 5 & Bath 4 at Study



This brochure is for general informational purposes and is to be used as a guide only. Changes may be made during the development process and floorplans, dimensions, fixtures, fittings, finishes and specifications are subject to change without notice. Window placement, balcony configuration, wardrobe sizes and living areas may vary slightly within each plan type. **EQUAL HOUSING OPPORTUNITY**

