



Bellflower II

CLASSIC SERIES

CHAPARRAL PARK 60-65

HITCHING POST WAY, OAK POINT, TX 75068

HOMES FROM
\$564,990

3,774
SQUARE FEET

4
BEDROOMS

4.5
BATHROOMS

2
CAR GARAGE



ELEVATION C



ELEVATION A

ELEVATION A



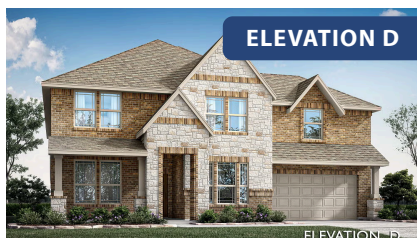
ELEVATION AS

ELEVATION AS



ELEVATION B

ELEVATION B



ELEVATION D

ELEVATION D





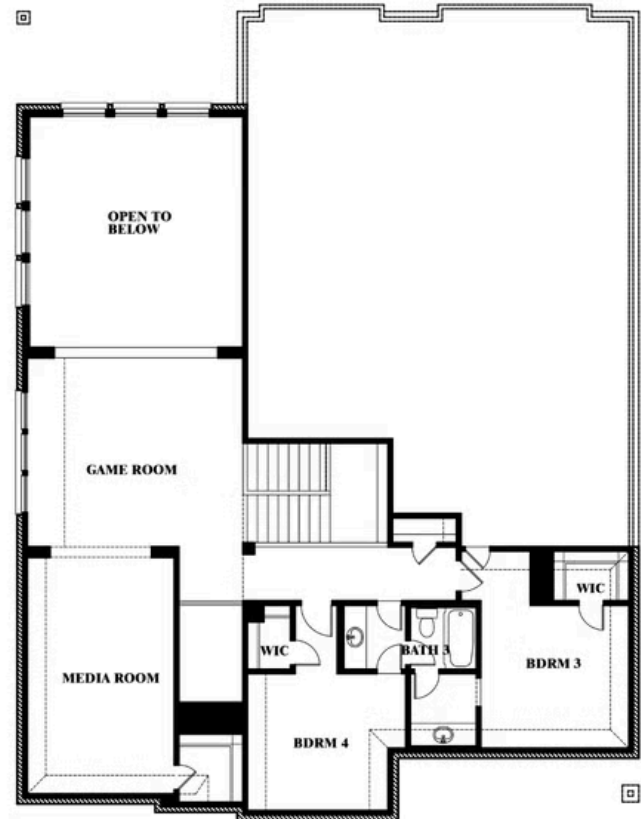
Bellflower II

CHAPARRAL PARK 60-65

HITCHING POST WAY, OAK POINT, TX 75068



Bellflower II



This brochure is for general informational purposes and is to be used as a guide only. Changes may be made during the development process and floorplans, dimensions, fixtures, fittings, finishes and specifications are subject to change without notice. Window placement, balcony configuration, wardrobe sizes and living areas may vary slightly within each plan type. EQUAL HOUSING OPPORTUNITY





Bellflower II

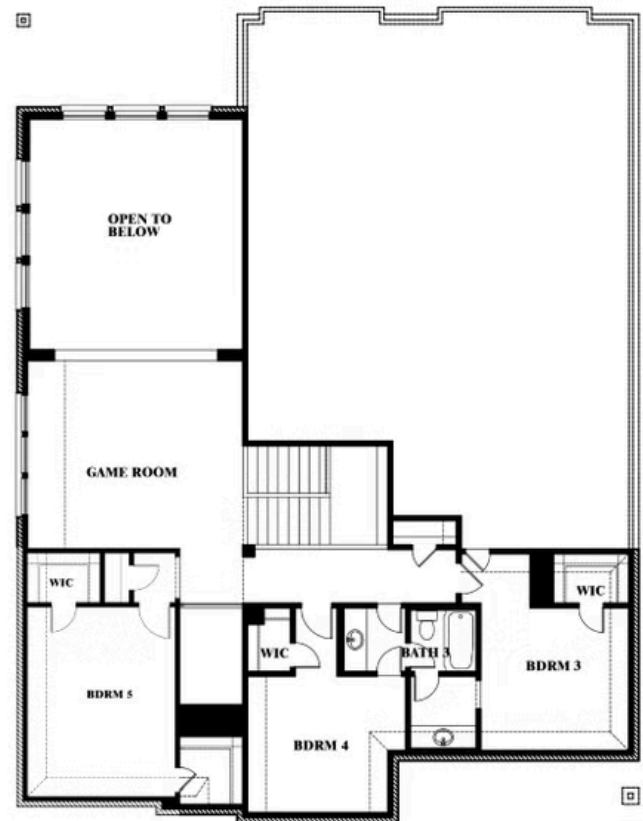
CHAPARRAL PARK 60-65

HITCHING POST WAY, OAK POINT, TX 75068



Bellflower II

Opt. Bed 5 at Media



This brochure is for general informational purposes and is to be used as a guide only. Changes may be made during the development process and floorplans, dimensions, fixtures, fittings, finishes and specifications are subject to change without notice. Window placement, balcony configuration, wardrobe sizes and living areas may vary slightly within each plan type. EQUAL HOUSING OPPORTUNITY





Bellflower II

CHAPARRAL PARK 60-65

HITCHING POST WAY, OAK POINT, TX 75068



Bellflower II Opt. Bed 5/Bath 4 at Media



This brochure is for general informational purposes and is to be used as a guide only. Changes may be made during the development process and floorplans, dimensions, fixtures, fittings, finishes and specifications are subject to change without notice. Window placement, balcony configuration, wardrobe sizes and living areas may vary slightly within each plan type. EQUAL HOUSING OPPORTUNITY

