



# Hawthorne

CLASSIC SERIES

HOMES FROM  
**\$469,990**

**CHAPARRAL PARK 60-65**

HITCHING POST WAY, OAK POINT, TX 75068

**2,235**  
SQUARE FEET

**4**  
BEDROOMS

**2.0**  
BATHROOMS

**2**  
CAR GARAGE



**ELEVATION A**



**ELEVATION B**

**ELEVATION B**



**ELEVATION C**

**ELEVATION C**





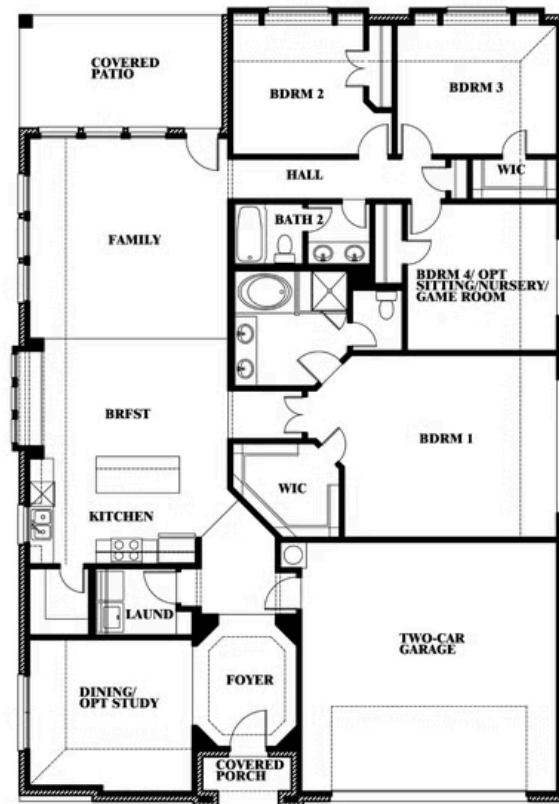
# Hawthorne

## CHAPARRAL PARK 60-65

HITCHING POST WAY, OAK POINT, TX 75068



## Hawthorne



This brochure is for general informational purposes and is to be used as a guide only. Changes may be made during the development process and floorplans, dimensions, fixtures, fittings, finishes and specifications are subject to change without notice. Window placement, balcony configuration, wardrobe sizes and living areas may vary slightly within each plan type. **EQUAL HOUSING OPPORTUNITY**





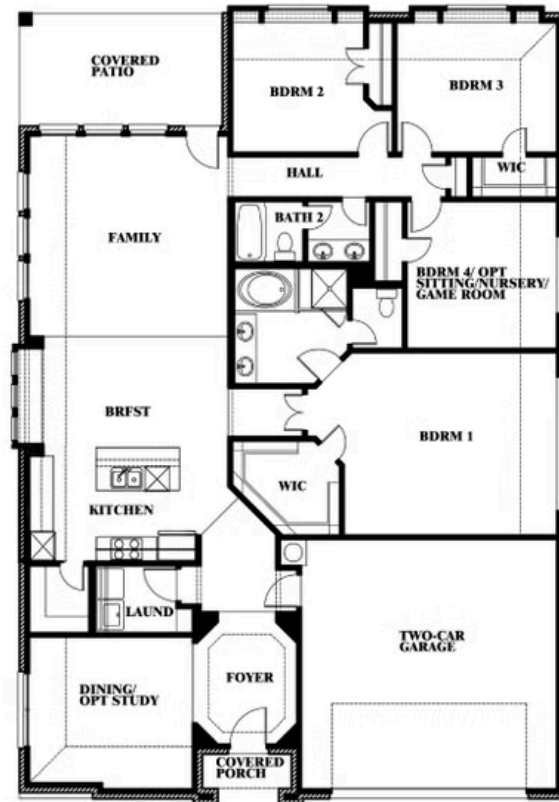
# Hawthorne

## CHAPARRAL PARK 60-65

HITCHING POST WAY, OAK POINT, TX 75068



## Hawthorne Opt. Deluxe Kitchen



This brochure is for general informational purposes and is to be used as a guide only. Changes may be made during the development process and floorplans, dimensions, fixtures, fittings, finishes and specifications are subject to change without notice. Window placement, balcony configuration, wardrobe sizes and living areas may vary slightly within each plan type. EQUAL HOUSING OPPORTUNITY

