

Primrose FE V

HOMES FROM
\$589,990

CLASSIC SERIES

CHAPARRAL PARK 60-65
HITCHING POST WAY, OAK POINT, TX 75068

3,733 SQUARE FEET	4 BEDROOMS	3.5 BATHROOMS	3 CAR GARAGE
-----------------------------	----------------------	-------------------------	------------------------

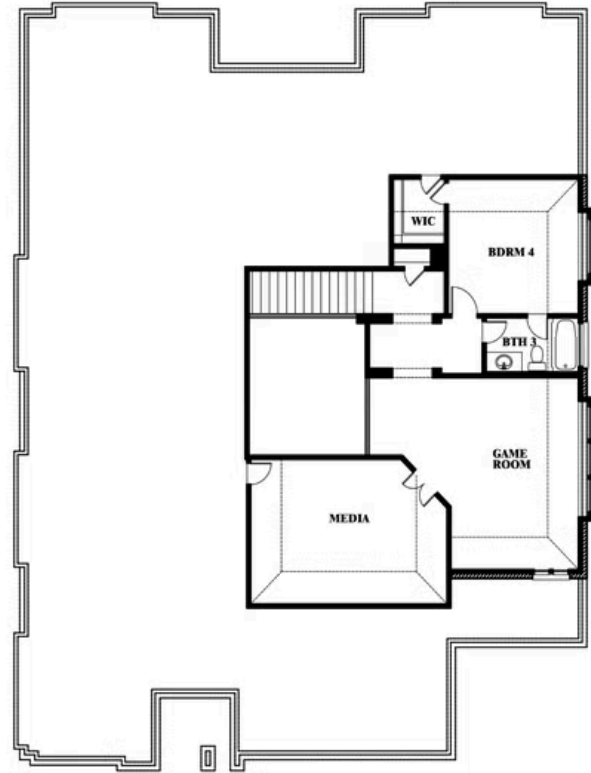


Primrose FE V

CHAPARRAL PARK 60-65
HITCHING POST WAY, OAK POINT, TX 75068



Primrose FE V



This brochure is for general informational purposes and is to be used as a guide only. Changes may be made during the development process and floorplans, dimensions, fixtures, fittings, finishes and specifications are subject to change without notice. Window placement, balcony configuration, wardrobe sizes and living areas may vary slightly within each plan type. EQUAL HOUSING OPPORTUNITY

