



1141 Hitching Post Way

OAK POINT, TX 75068

CHAPARRAL PARK 60-65

ROSE II FLOOR PLAN

PRICED AT

\$664,493

3560

SQUARE FEET

5

BEDROOMS

4.0

BATHROOMS

3

CAR GARAGE

Under Construction



NEW! NEVER LIVED IN. Finishing April 2026. Full of upgrades throughout 5 large bedrooms and 4 full baths, this two-story Rose II plan from Bloomfield Homes has been designed to check off all your boxes! Common areas on the first floor come drenched in engineered wood floors in a deep, rich stain that contrasts beautifully with the clean white cabinets and countertops. Through the custom 8' front door, a wide hallway and curved staircase with modern box newel railing create a picturesque entryway. The tall ceilings and extensive windows fill the home with natural lighting, with all the 2-inch faux wood blinds included! 2 bedrooms - a guest suite and the primary suite - are located privately downstairs, while the remaining 3 bedrooms upstairs each have a close bathroom (including a Jack-and-Jill configuration). Flexible spaces also found on both floors like a generous study with glass French doors just off the family room, and a game room with dual doors to a media room directly upstairs. The transitional, open-concept Family Room brings a light, airy atmosphere with a soaring 17' ceiling and overlook from the game room bordered by more modern railing. Enjoy double ovens and a built-in, 5-burner gas cooktop with a pasta arm for easy meal prep. Other upgrades in the kitchen include a single bowl sink with Delta faucet, deep cookware drawers, a wood vent hood, fully wrapped island with legs, trash pull-out drawer, and teardrop backsplash. Luxurious Primary Suite has the deck mount tub and shower separate, with smooth pebble mud pan in the shower reminiscent of a spa! Practical enhancements selected add value like extra lighting and electrical, a 3-car garage, Level 4 tile in all bathrooms, upgraded brick and fully bricked front porch, gutters, and a gas line on the covered rear patio. Builder Warranty included too! Located in beautiful Oak Point with Denton ISD schools and slower lifestyle. Call Bloomfield Homes to find out more.





1141 Hitching Post Way

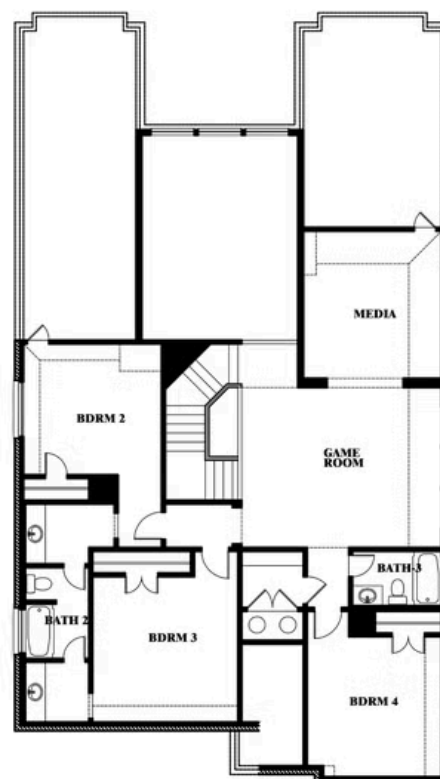
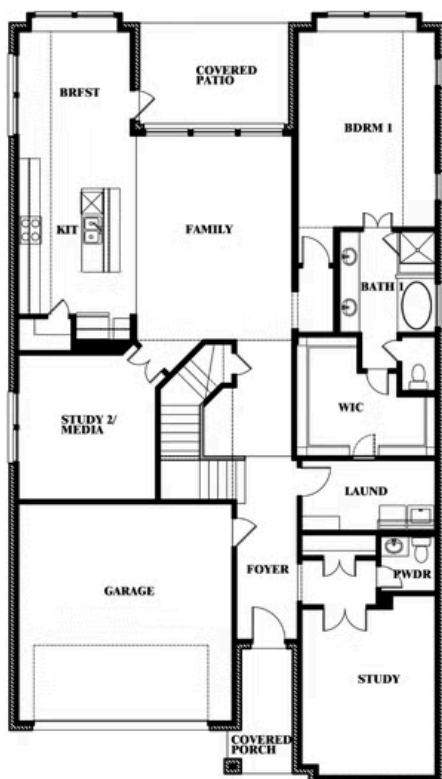
OAK POINT, TX 75068

ROSE II FLOOR PLAN

ROSE II FLOOR PLAN



Rose II



This brochure is for general informational purposes and is to be used as a guide only. Changes may be made during the development process and floorplans, dimensions, fixtures, fittings, finishes and specifications are subject to change without notice. Window placement, balcony configuration, wardrobe sizes and living areas may vary slightly within each plan type. **EQUAL HOUSING OPPORTUNITY**



Document generated Feb 19, 2026. Prices, plans, square footage, features, amenities and materials are subject to change at any time without notice and vary among communities. Listed prices are for informational purposes only, are not binding, and do not create any contractual obligation(s). The price of any home is dependent on numerous factors, all of which are unique to a specific home, and is not guaranteed until specified in a binding contract. Pricing of elevations and additional optional beds/baths varies per plan. Some plans require a premium homesite. Renderings of homes are artist concepts and may not reflect exact colors and materials. Verify current tax rates & jurisdictions with the appropriate taxing authority.



1141 Hitching Post Way

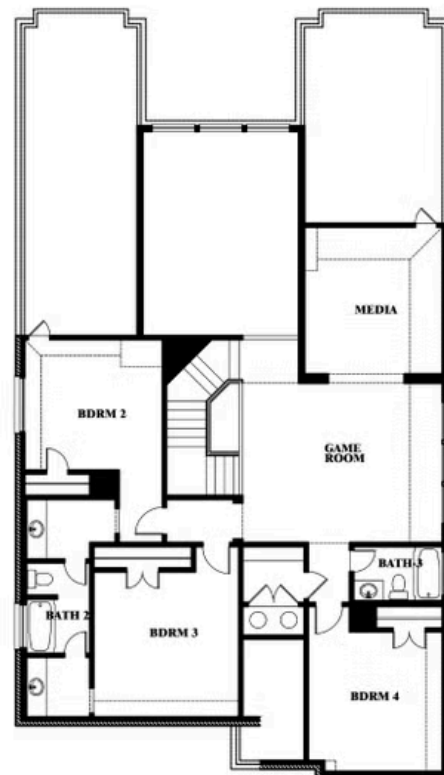
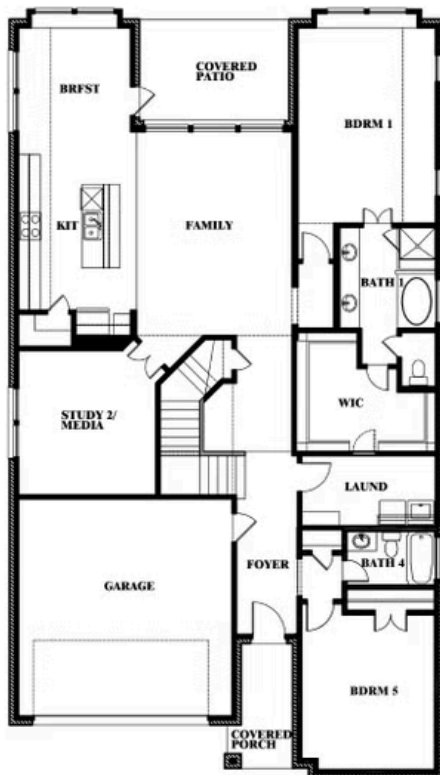
OAK POINT, TX 75068

ROSE II FLOOR PLAN

ROSE II FLOOR PLAN WITH OPTIONAL BED & BATH AT STUDY



Rose II Opt. Bed & Bath at Study



This brochure is for general informational purposes and is to be used as a guide only. Changes may be made during the development process and floorplans, dimensions, fixtures, fittings, finishes and specifications are subject to change without notice. Window placement, balcony configuration, wardrobe sizes and living areas may vary slightly within each plan type. EQUAL HOUSING OPPORTUNITY

