

Violet III

CLASSIC SERIES

HOMES FROM
\$504,990

CHAPARRAL PARK 60-65
HITCHING POST WAY, OAK POINT, TX 75068

2,628
SQUARE FEET

4
BEDROOMS

3.5
BATHROOMS

2
CAR GARAGE



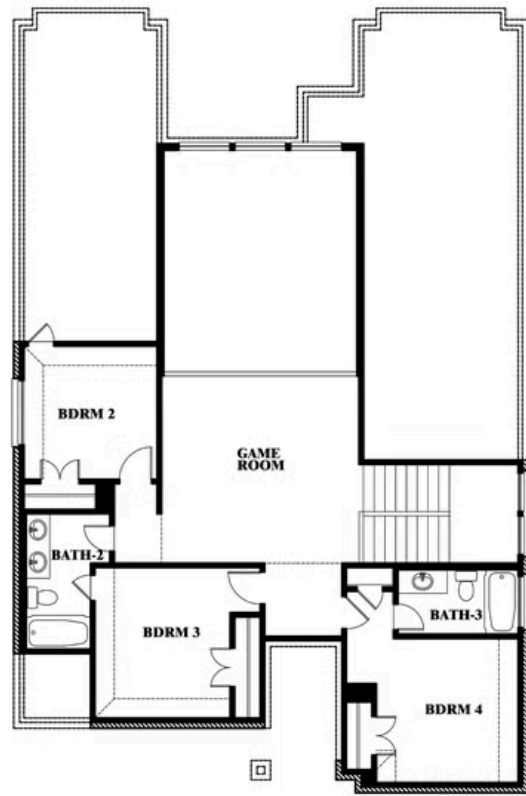
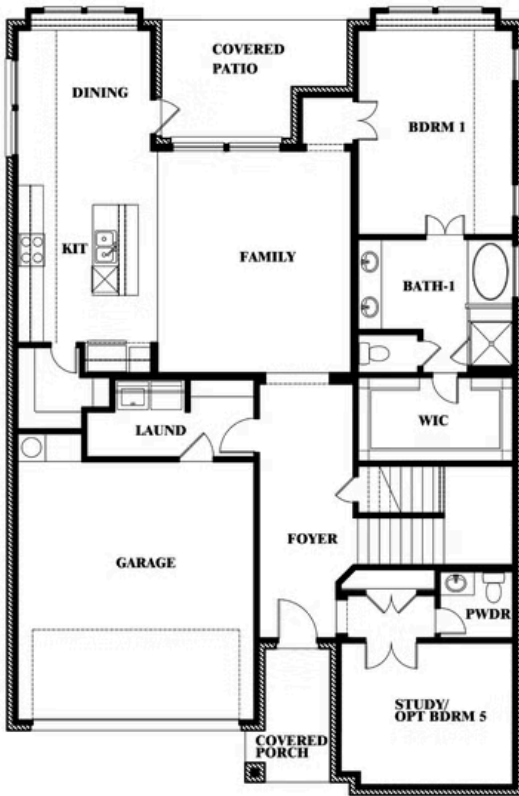
Violet III

VIOLET III FLOOR PLAN

CHAPARRAL PARK 60-65
HITCHING POST WAY, OAK POINT, TX 75068



Violet III



This brochure is for general informational purposes and is to be used as a guide only. Changes may be made during the development process and floorplans, dimensions, fixtures, fittings, finishes and specifications are subject to change without notice. Window placement, balcony configuration, wardrobe sizes and living areas may vary slightly within each plan type. EQUAL HOUSING OPPORTUNITY



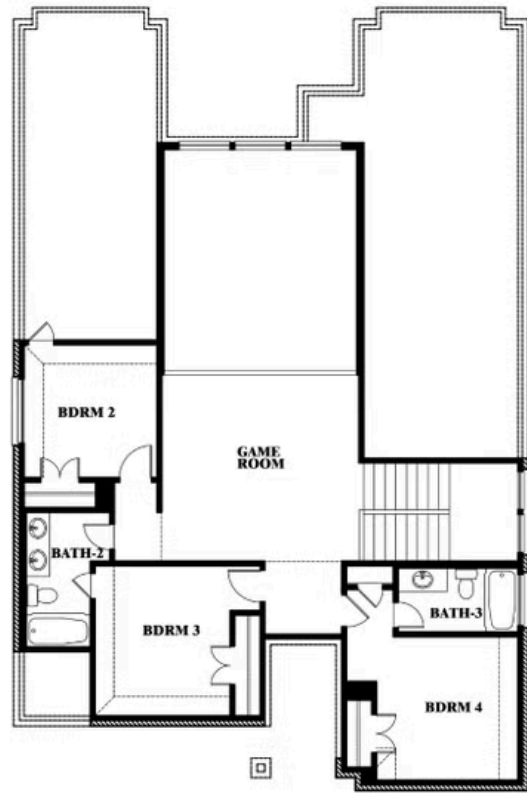
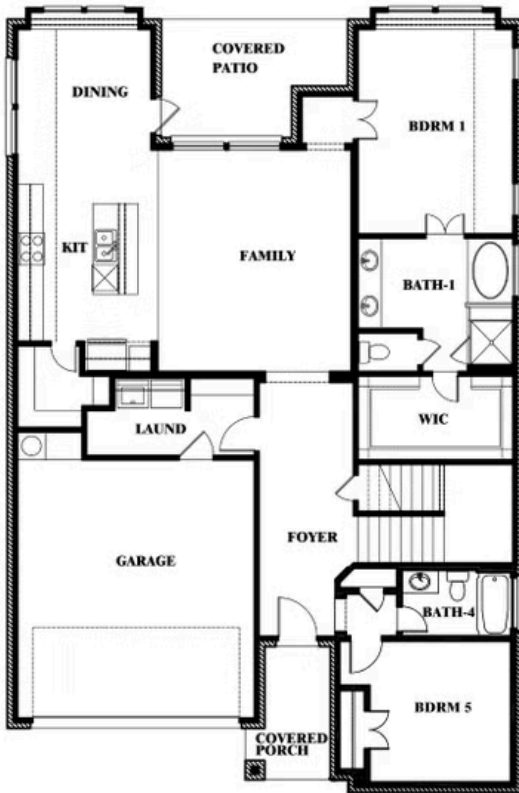
Violet III

CHAPARRAL PARK 60-65
HITCHING POST WAY, OAK POINT, TX 75068

VIOLET III FLOOR PLAN WITH BEDROOM AT STUDY



Violet III
Opt. Bed 5 & Bath 4 at Study



This brochure is for general informational purposes and is to be used as a guide only. Changes may be made during the development process and floorplans, dimensions, fixtures, fittings, finishes and specifications are subject to change without notice. Window placement, balcony configuration, wardrobe sizes and living areas may vary slightly within each plan type. EQUAL HOUSING OPPORTUNITY

