



1185 Hitching Post Way

OAK POINT, TX 75068

CHAPARRAL PARK

ROSE II FLOOR PLAN

MODEL HOME • 1181 HITCHING POST WAY | SEABERRY II

3,558 SQUARE FEET	5 BEDROOMS	4.0 BATHROOMS	2.5 CAR GARAGE
-----------------------------	----------------------	-------------------------	--------------------------

MODEL HOME • 1185 HITCHING POST WAY | ROSE II

Model Home



The Classic Series Rose II floor plan is a two-story home with four bedrooms and three bathrooms. Features of this plan include a covered porch, large family room, study, open kitchen with custom cabinets and island, a primary suite with an ensuite bathroom, walk-in closet and garden tub; an upstairs game room, and an upstairs media room. Contact us or visit our model home for more information about building this plan.





1185 Hitching Post Way

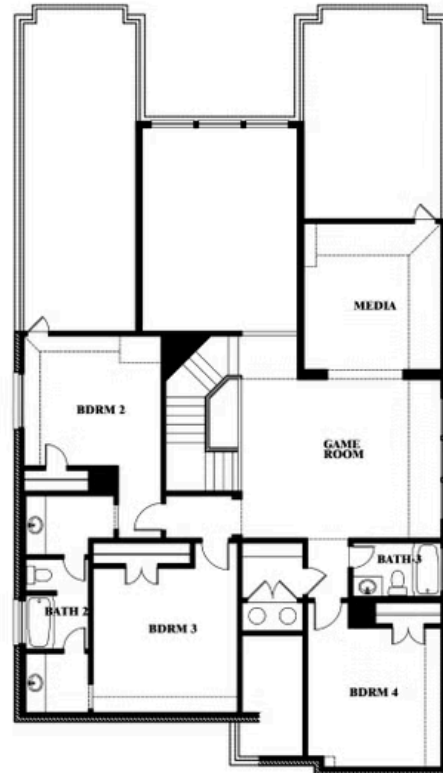
OAK POINT, TX 75068

ROSE II FLOOR PLAN

ROSE II FLOOR PLAN WITH OPTIONAL BED & BATH AT STUDY



Rose II
Opt. Bed & Bath at Study



This brochure is for general informational purposes and is to be used as a guide only. Changes may be made during the development process and floorplans, dimensions, fixtures, fittings, finishes and specifications are subject to change without notice. Window placement, balcony configuration, wardrobe sizes and living areas may vary slightly within each plan type. EQUAL HOUSING OPPORTUNITY



Document generated May 23, 2026. Prices, plans, square footage, features, amenities and materials are subject to change at any time without notice and vary among communities. Listed prices are for informational purposes only, are not binding, and do not create any contractual obligation(s). The price of any home is dependent on numerous factors, all of which are unique to a specific home, and is not guaranteed until specified in a binding contract. Pricing of elevations and additional optional beds/baths varies per plan. Some plans require a premium homesite. Renderings of homes are artist concepts and may not reflect exact colors and materials. Verify current tax rates & jurisdictions with the appropriate taxing authority.