



# Rose

CLASSIC SERIES

HOMES FROM  
**\$555,990**

## CREEKVIEW MEADOWS

14562 FLOSSIE STREET, PILOT POINT, TX 75009

**3,359**  
SQUARE FEET

**4**  
BEDROOMS

**3.5**  
BATHROOMS

**2**  
CAR GARAGE



**ELEVATION A**



**ELEVATION AS**

**ELEVATION AS**



**ELEVATION B**

**ELEVATION B**



**ELEVATION C**

**ELEVATION C**



**ELEVATION D**

**ELEVATION D**





# Rose

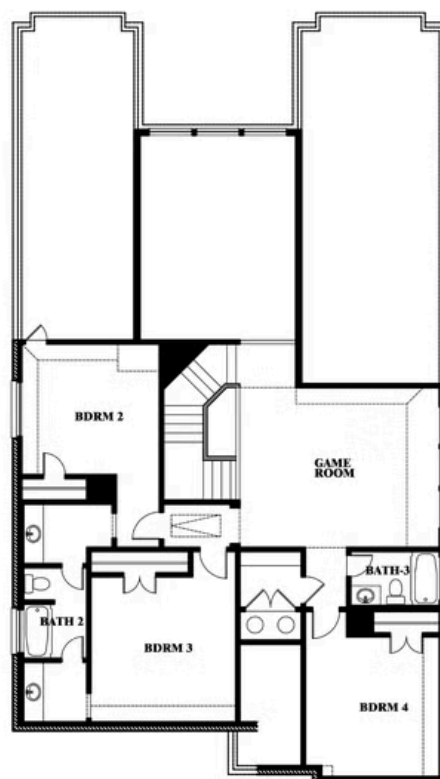
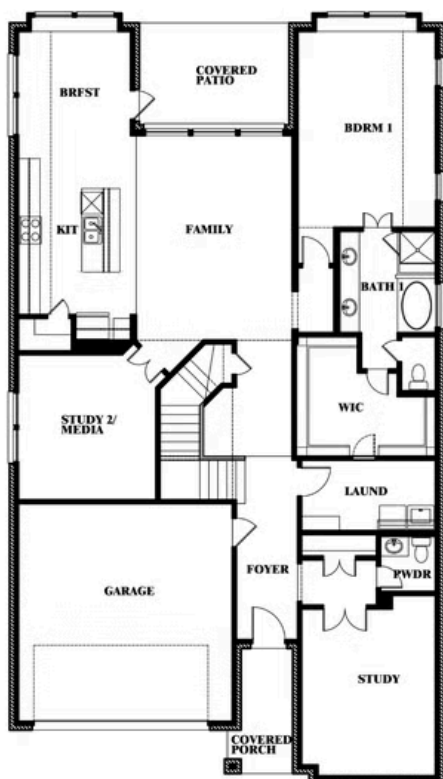
## ROSE FLOOR PLAN

## CREEKVIEW MEADOWS

14562 FLOSSIE STREET, PILOT POINT, TX 75009



## Rose



This brochure is for general informational purposes and is to be used as a guide only. Changes may be made during the development process and floorplans, dimensions, fixtures, fittings, finishes and specifications are subject to change without notice. Window placement, balcony configuration, wardrobe sizes and living areas may vary slightly within each plan type. EQUAL HOUSING OPPORTUNITY





# Rose

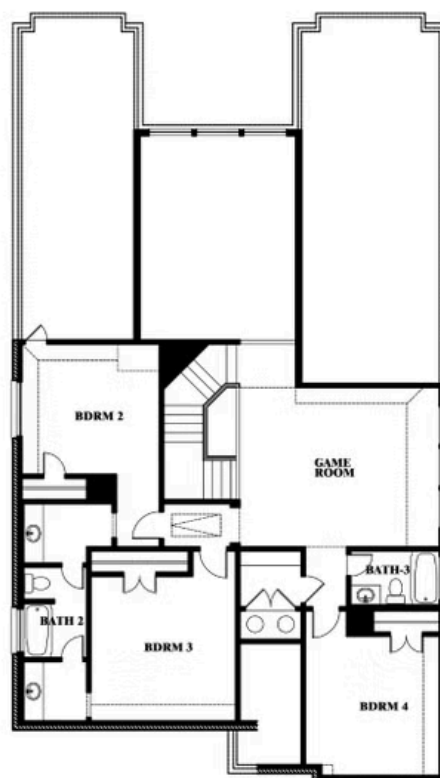
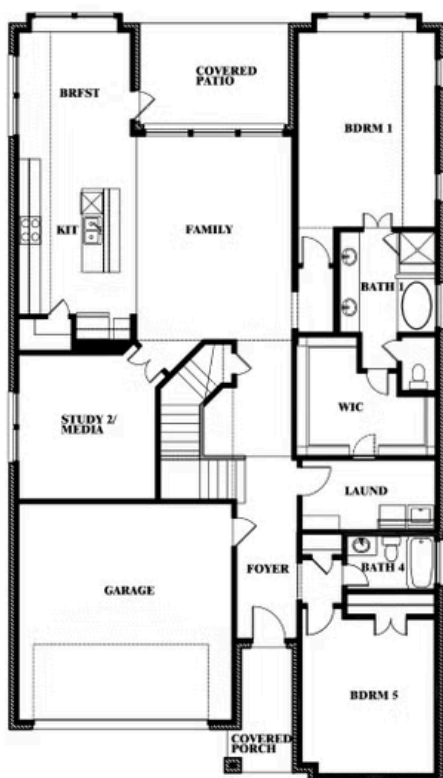
ROSE FLOOR PLAN WITH OPTIONAL BED & BATH AT STUDY

## CREEKVIEW MEADOWS

14562 FLOSSIE STREET, PILOT POINT, TX 75009



## Rose Opt. Bed & Bath at Study



This brochure is for general informational purposes and is to be used as a guide only. Changes may be made during the development process and floorplans, dimensions, fixtures, fittings, finishes and specifications are subject to change without notice. Window placement, balcony configuration, wardrobe sizes and living areas may vary slightly within each plan type. EQUAL HOUSING OPPORTUNITY