



Windsong Ranch Classic 66

Signature Series

4250 OLD ROSEBUD LANE • PROSPER, TX 75078

AVAILABLE HOMES

Move-In Ready



971 Nance Lane

PROSPER, TX 75078

MAGNOLIA II FLOOR PLAN

3,435

SQUARE FEET

5

BEDS

4

BATHS

2.5

GARAGE

WAS ~~\$952,385~~ NOW **\$814,990**



Document generated Jul 3, 2025. Prices, plans, square footage, features and materials are subject to change at any time without notice and vary among communities. Listed prices are for informational purposes only, are not binding, and do not create any contractual obligation(s). The price of any home is dependent on numerous factors, all of which are unique to a specific home, and is not guaranteed until specified in a binding contract. Pricing of elevations and additional optional beds/baths vary per plan. Some plans require a premium homesite. Please ask the Community Manager for details. Renderings of homes are artist concepts and may not reflect exact colors and materials.



Other Available Homes in Windsong Ranch

4250 OLD ROSEBUD LANE · PROSPER, TX 75078

AVAILABLE HOMES



Available 8/25

4010 Zina Lane

PROSPER, TX 75078
WINDSONG RANCH CLASSIC 61
MAGNOLIA FLOOR PLAN

3,187	5	4	2
SQUARE FEET	BEDS	BATHS	GARAGE
WAS \$851,935 NOW \$764,990			

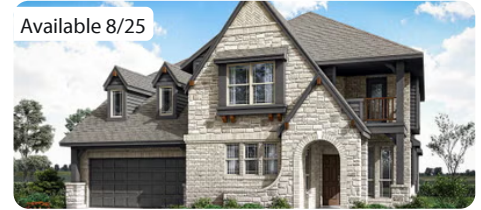


Available 8/25

4020 Zina Lane

PROSPER, TX 75078
WINDSONG RANCH CLASSIC 61
ROSE FLOOR PLAN

3,359	5	4	2.5
SQUARE FEET	BEDS	BATHS	GARAGE
WAS \$859,236 NOW \$799,990			



Available 8/25

4021 Zina Lane

PROSPER, TX 75078
WINDSONG RANCH CLASSIC 61
MAGNOLIA II FLOOR PLAN

3,435	5	4	2
SQUARE FEET	BEDS	BATHS	GARAGE
WAS \$882,714 NOW \$814,990			

