



Woodstone

10032 Blue Forest Lane
Providence Village, TX 76227

MODEL

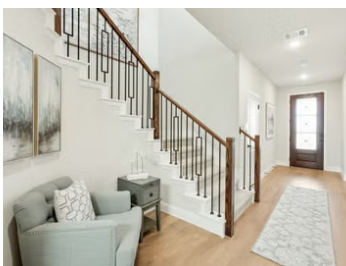
10032 Blue Forest Ln, Providence Village, TX 76227

1,840 – 3,557
SQUARE FEET

3 – 5
BEDROOMS

2 – 4.5
BATHROOMS

2
CAR GARAGE



Welcome to Woodstone, conveniently located off FM 2931, just north of HWY 380. This charming neighborhood seamlessly blends modern amenities with suburban tranquility. Residents enjoy a range of features including a community pool and pool house, the nearby Fortunata winery, local restaurants, and the scenic Lake Lewisville, less than 10 miles away. Within an hour's drive, you can visit the world's largest casino on the outskirts of Oklahoma or indulge in a five-star spa experience at the Omni PGA Frisco Resort.

Woodstone offers a quaint, welcoming atmosphere while providing easy access to all modern conveniences. With one of the lowest tax rates in the area, a highly rated school district, and year-round planned community activities, Woodstone is more than just a neighborhood. It's the perfect place to call home.





Woodstone

Community Amenities:

- Pool
- Pool House
- Pavilion
- Playground
- Trails

Local Area Amenities:

- Waterparks
- Nearby Lakes
- Ray Roberts Lake State Park

Utilities:

- Electric: CoServ 940.321.7800
- Gas: CoServ 940.321.7800
- Water: Mustang SUD 940.440.9561
- Internet Providers: Suddenlink 885.822.5151
- Trash & Recycling: Republic Services 972.316.0789

HOA

\$840/year
Neighborhood Management Inc.
(972) 359-1548

Tax

Rate Per \$100
1.93

Schools

District	Aubrey ISD
Elementary	Jackie Fuller Elementary
Middle	Owens Middle School
High	Aubrey High School

Driving Directions

Off of Main Street in Providence Village, just north of Hwy 380. From Hwy 380, turn north on Main Street. Travel 2 miles north and the community of Woodstone will be on your right.

