



Carolina IV Side Entry

HOMES FROM
\$590,990

CLASSIC SERIES

CRYSTAL LAKE ESTATES

143 CRYSTAL LAKE LANE, RED OAK, TX 75154

3,280
SQUARE FEET

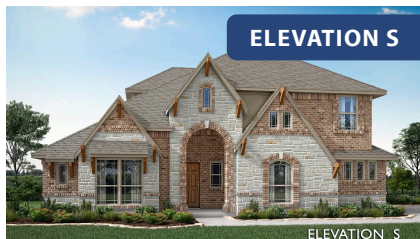
4
BEDROOMS

3.0
BATHROOMS

2
CAR GARAGE



ELEVATION T



ELEVATION S

ELEVATION S



ELEVATION R

ELEVATION R





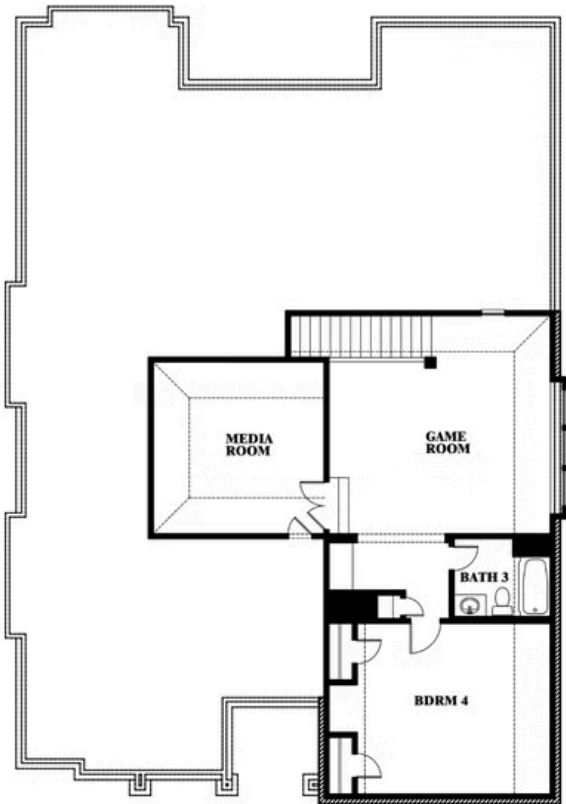
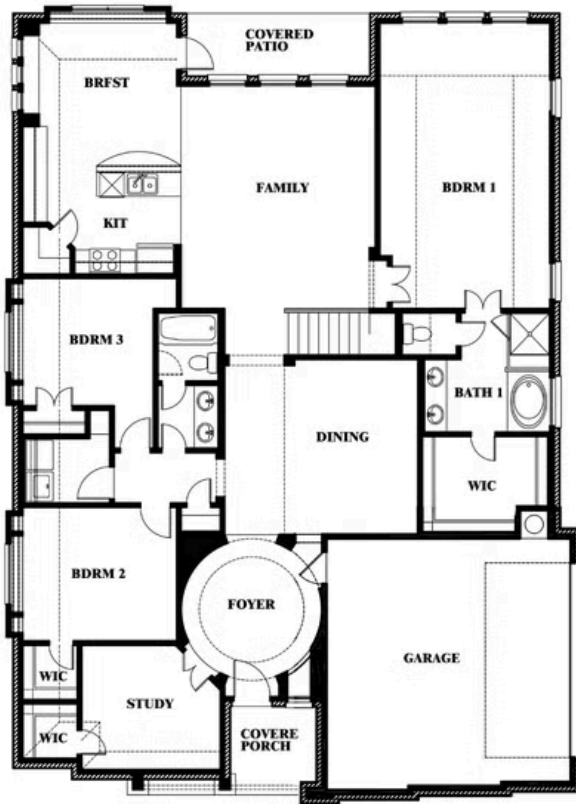
Carolina IV Side Entry

CRYSTAL LAKE ESTATES

143 CRYSTAL LAKE LANE, RED OAK, TX 75154



Carolina IV Side Entry



This brochure is for general informational purposes and is to be used as a guide only. Changes may be made during the development process and floorplans, dimensions, fixtures, fittings, finishes and specifications are subject to change without notice. Window placement, balcony configuration, wardrobe sizes and living areas may vary slightly within each plan type. EQUAL HOUSING OPPORTUNITY

