



# Magnolia II Side Entry

HOMES FROM  
**\$580,990**

CLASSIC SERIES

**GLENBROOK**

SPRING CIRCLE, RED OAK, TX 75154

**3,430**  
SQUARE FEET

**4**  
BEDROOMS

**2.5**  
BATHROOMS

**3**  
CAR GARAGE



**ELEVATION R**



**ELEVATION S**

**ELEVATION S**



**ELEVATION T**

**ELEVATION T**





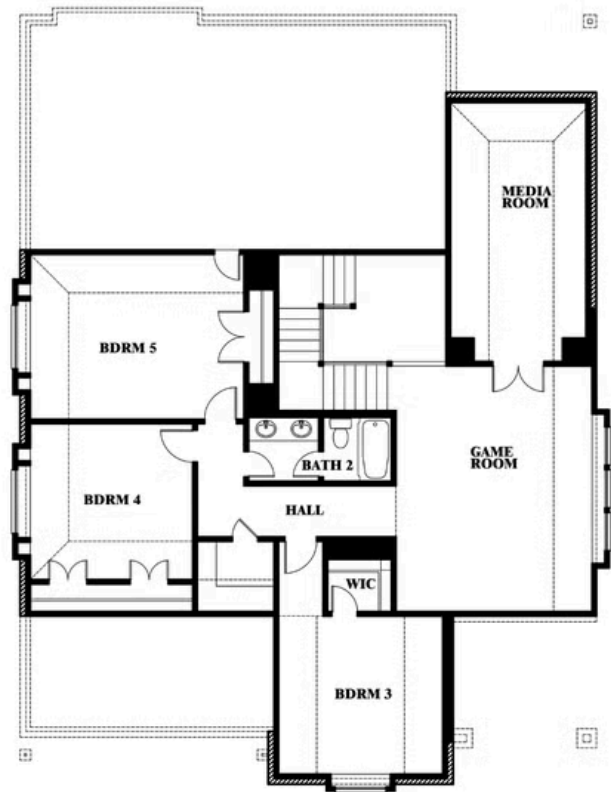
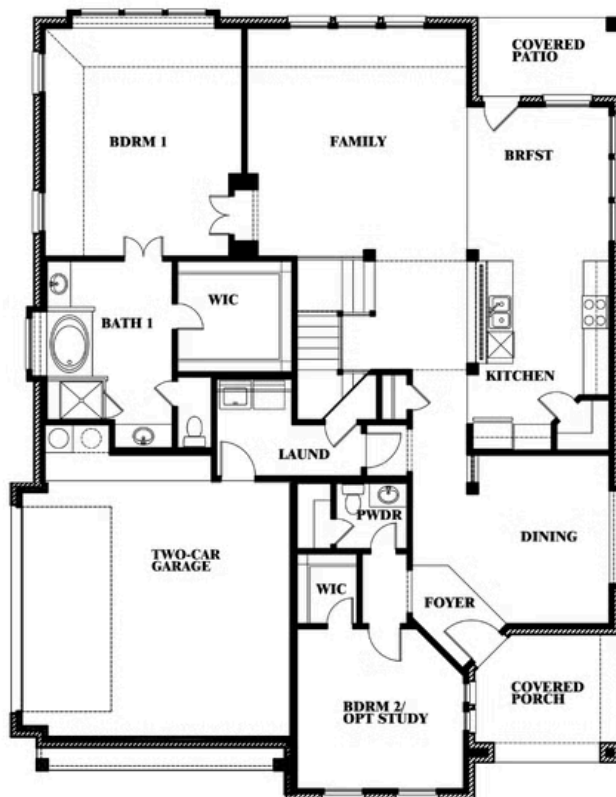
# Magnolia II Side Entry

## GLENBROOK

SPRING CIRCLE, RED OAK, TX 75154



## Magnolia II Side Entry



This brochure is for general informational purposes and is to be used as a guide only. Changes may be made during the development process and floorplans, dimensions, fixtures, fittings, finishes and specifications are subject to change without notice. Window placement, balcony configuration, wardrobe sizes and living areas may vary slightly within each plan type. EQUAL HOUSING OPPORTUNITY