



1136 Via Toscana Lane

ROCKWALL, TX 75032

SONOMA VERDE
MAGNOLIA II FLOOR PLAN**3435**
SQUARE FEET**4**
BEDROOMS**3.5**
BATHROOMS**2.5**
CAR GARAGE

Model Home



The Classic Series Magnolia II floor plan is a two-story home with four bedrooms and two and a half bathrooms. Features of this plan include a covered porch, formal dining, large family room, study, open kitchen with custom cabinets and island, a bedroom suite with a walk-in closet and garden tub, and an upstairs game room and media room. Contact us or visit our model home for more information about building this plan.





1136 Via Toscana Lane

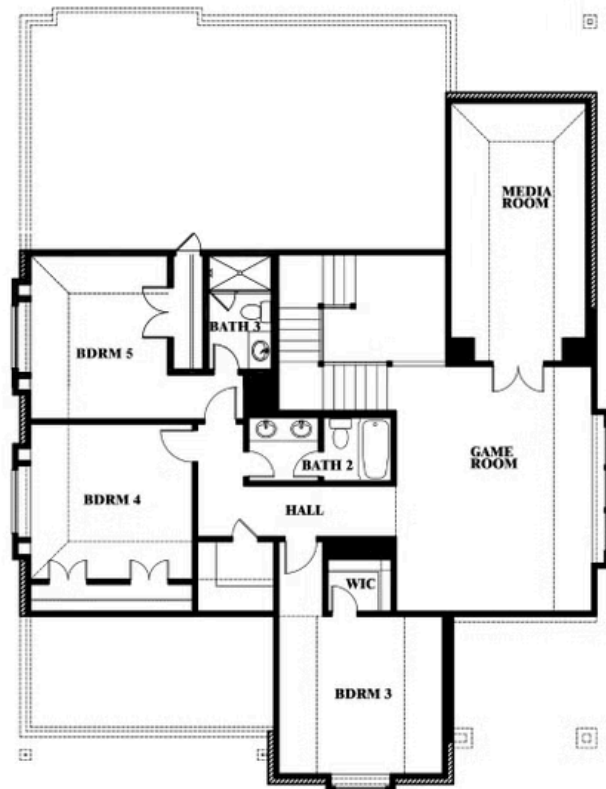
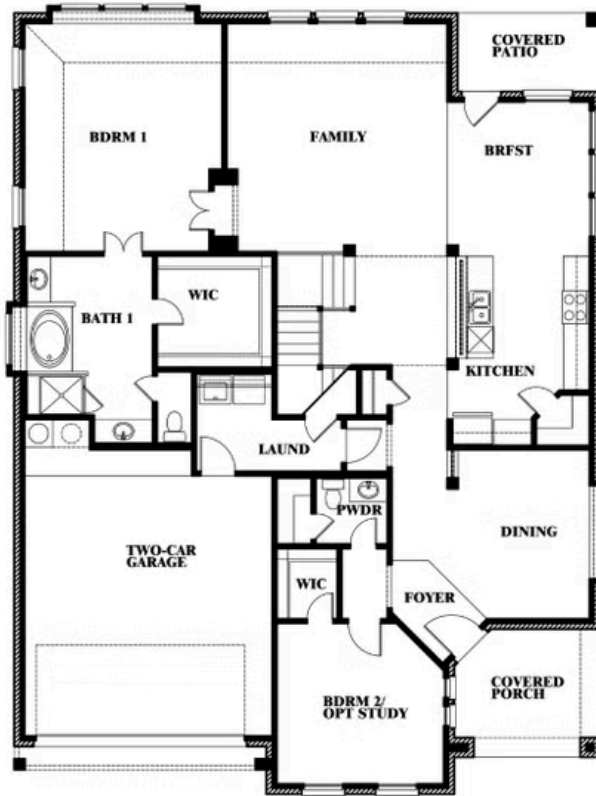
ROCKWALL, TX 75032

MAGNOLIA II FLOOR PLAN

MAGNOLIA II FLOOR PLAN WITH OPTIONAL BATH 3



Magnolia II
Opt. Bath 3 at Bed 5



This brochure is for general informational purposes and is to be used as a guide only. Changes may be made during the development process and floorplans, dimensions, fixtures, fittings, finishes and specifications are subject to change without notice. Window placement, balcony configuration, wardrobe sizes and living areas may vary slightly within each plan type. EQUAL HOUSING OPPORTUNITY



Document generated Jan 18, 2026. Prices, plans, square footage, features, amenities and materials are subject to change at any time without notice and vary among communities. Listed prices are for informational purposes only, are not binding, and do not create any contractual obligation(s). The price of any home is dependent on numerous factors, all of which are unique to a specific home, and is not guaranteed until specified in a binding contract. Pricing of elevations and additional optional beds/baths varies per plan. Some plans require a premium homesite. Renderings of homes are artist concepts and may not reflect exact colors and materials. Verify current tax rates & jurisdictions with the appropriate taxing authority.