



# 2117 Rio Piedra Dr

ROYSE CITY, TX 75189

CAROLINA IV FLOOR PLAN

<b>3,280</b> SQUARE FEET	<b>4</b> BEDROOMS	<b>3.0</b> BATHROOMS	<b>2</b> CAR GARAGE
-----------------------------	----------------------	-------------------------	------------------------

**STONE RIVER GLEN 50S**

MODEL HOME • 2117 RIO PIEDRA DR | CAROLINA IV

MODEL HOME • 2113 RIO PIEDRA DRIVE | BELLFLOWER IV

Model Home



The Classic Series Carolina IV floor plan is a two-story home with 4 bedrooms, a study, and 3 bathrooms. Features of this plan include a rotunda entry, covered porch, formal dining, large family room, open kitchen with custom cabinets and island, a primary suite with a walk-in closet and garden tub, an upstairs game room, media room, and second bedroom suite. Contact us or visit our model home for more information about building this plan.



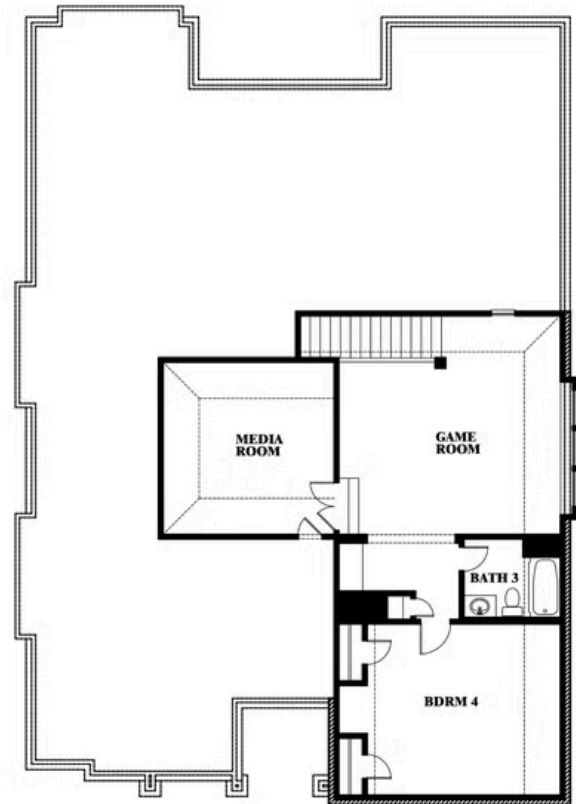
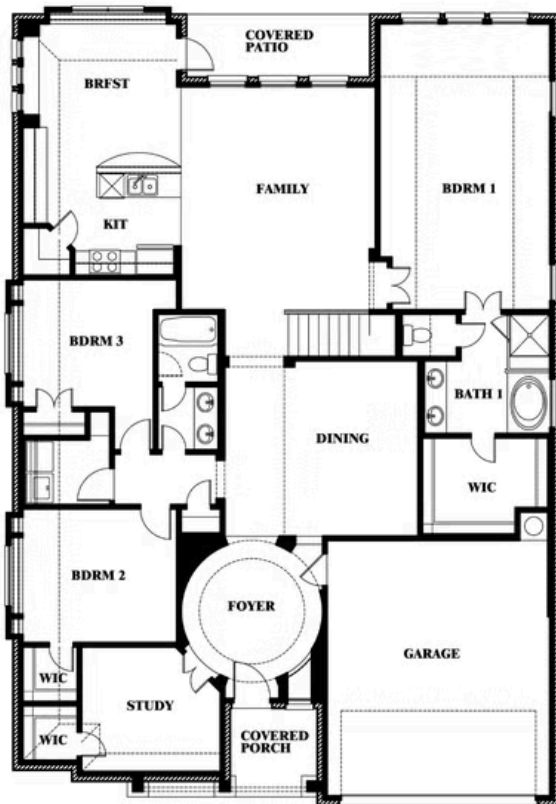


**2117 Rio Piedra Dr**

ROYSE CITY, TX 75189



Carolina IV



This brochure is for general informational purposes and is to be used as a guide only. Changes may be made during the development process and floorplans, dimensions, fixtures, fittings, finishes and specifications are subject to change without notice. Window placement, balcony configuration, wardrobe sizes and living areas may vary slightly within each plan type. EQUAL HOUSING OPPORTUNITY



Document generated Apr 17, 2026. Prices, plans, square footage, features, amenities and materials are subject to change at any time without notice and vary among communities. Listed prices are for informational purposes only, are not binding, and do not create any contractual obligation(s). The price of any home is dependent on numerous factors, all of which are unique to a specific home, and is not guaranteed until specified in a binding contract. Pricing of elevations and additional optional beds/baths varies per plan. Some plans require a premium homesite. Renderings of homes are artist concepts and may not reflect exact colors and materials. Verify current tax rates & jurisdictions with the appropriate taxing authority.