

# Violet IV

CLASSIC SERIES

## STONE RIVER GLEN 60S

2113 RIO PIEDRA DRIVE, ROYSE CITY, TX 75189

HOMES FROM

**\$468,990**

**2,838**

SQUARE FEET

**4**

BEDROOMS

**3.5**

BATHROOMS

**2**

CAR GARAGE



**ELEVATION A**



**ELEVATION AS**

ELEVATION AS



**ELEVATION B**

ELEVATION B



**ELEVATION C**

ELEVATION C



**ELEVATION D**

ELEVATION D

# Violet IV

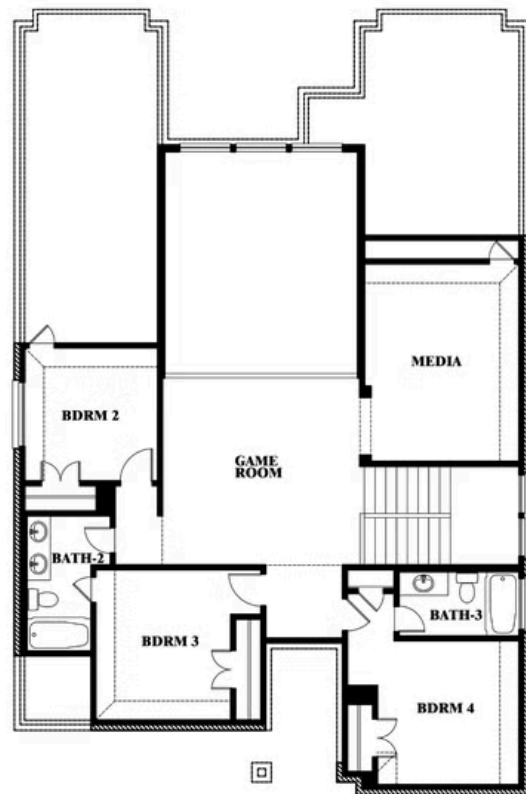
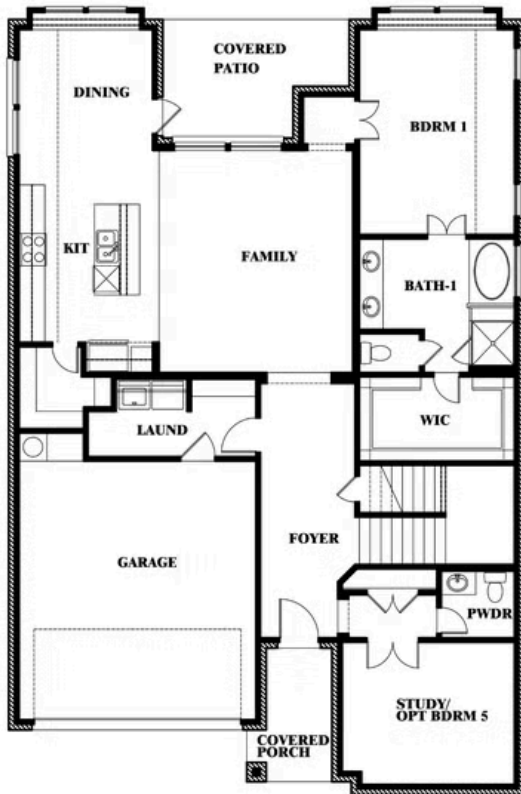
## VIOLET IV FLOOR PLAN

## STONE RIVER GLEN 60S

2113 RIO PIEDRA DRIVE, ROYSE CITY, TX 75189



## Violet IV



This brochure is for general informational purposes and is to be used as a guide only. Changes may be made during the development process and floorplans, dimensions, fixtures, fittings, finishes and specifications are subject to change without notice. Window placement, balcony configuration, wardrobe sizes and living areas may vary slightly within each plan type. EQUAL HOUSING OPPORTUNITY

# Violet IV

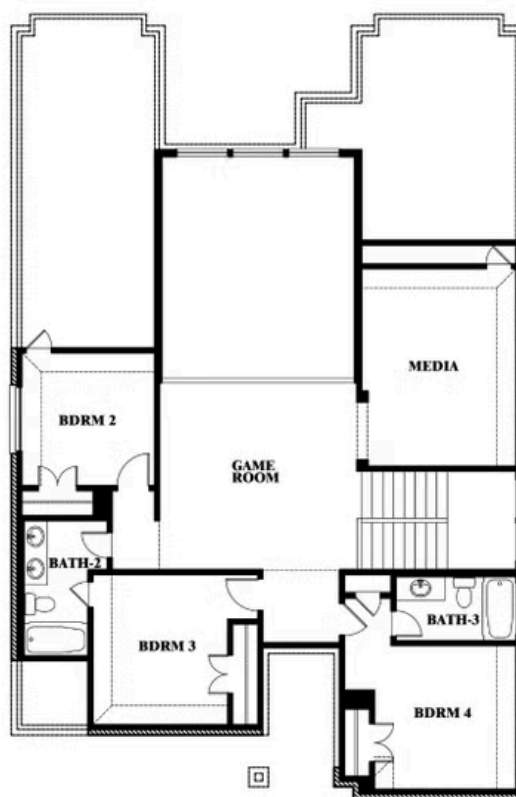
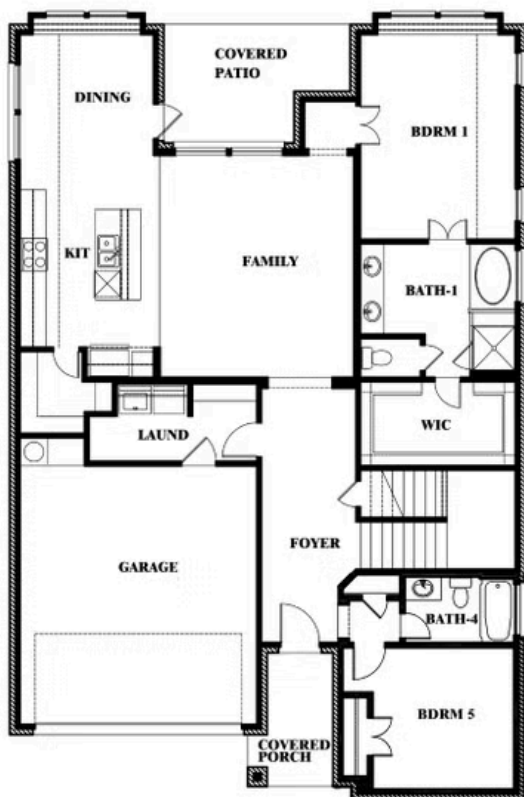
**VIOLET IV FLOOR PLAN WITH OPTIONAL BEDROOM AT  
STUDY**

## STONE RIVER GLEN 60S

2113 RIO PIEDRA DRIVE, ROYSE CITY, TX 75189



## Violet IV Opt. Bed 5 & Bath 4 at Study



This brochure is for general informational purposes and is to be used as a guide only. Changes may be made during the development process and floorplans, dimensions, fixtures, fittings, finishes and specifications are subject to change without notice. Window placement, balcony configuration, wardrobe sizes and living areas may vary slightly within each plan type. **EQUAL HOUSING OPPORTUNITY**