



# 1106 Alexander St

TRENTON, TX 75490

**ANDERSON CROSSING**

VIOLET IV FLOOR PLAN

<b>2,838</b> SQUARE FEET	<b>4</b> BEDROOMS	<b>3.5</b> BATHROOMS	<b>2</b> CAR GARAGE
-----------------------------	----------------------	-------------------------	------------------------

MODEL HOME • 1106 ALEXANDER ST | VIOLET IV

Model Home



The Classic Series Violet IV floor plan is a two-story home with four bedrooms and three and a half bathrooms. Features of this plan include a formal dining room, covered porch, large family room, study, open kitchen with custom cabinets and island, primary suite with an ensuite bathroom and a walk-in closet, an upstairs game room, and media room. Contact us or visit our model home for more information about building this plan.





**1106 Alexander St**

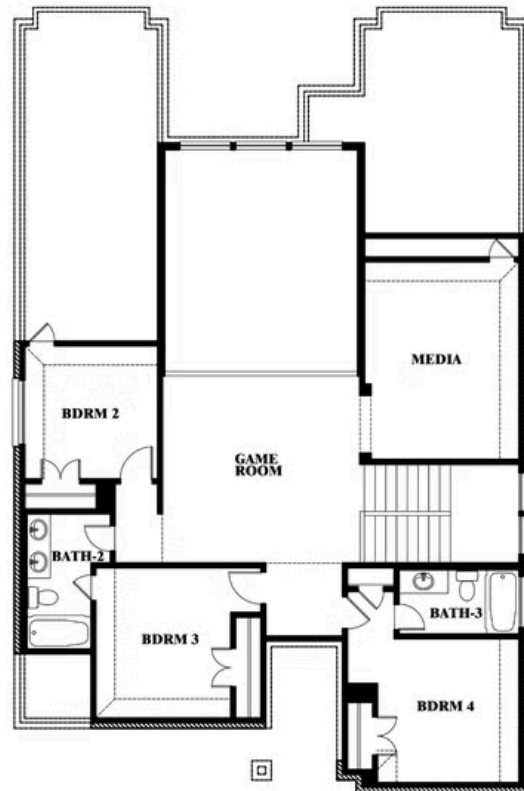
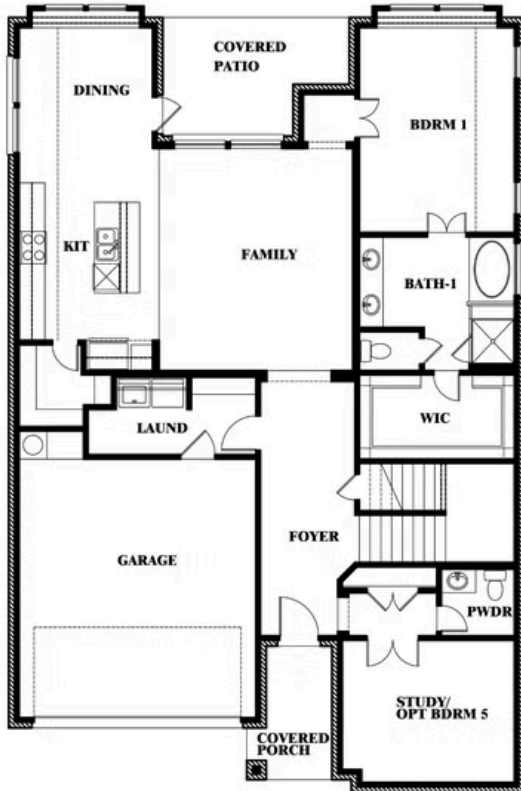
TRENTON, TX 75490

VIOLET IV FLOOR PLAN

**VIOLET IV FLOOR PLAN**



**Violet IV**



This brochure is for general informational purposes and is to be used as a guide only. Changes may be made during the development process and floorplans, dimensions, fixtures, fittings, finishes and specifications are subject to change without notice. Window placement, balcony configuration, wardrobe sizes and living areas may vary slightly within each plan type. EQUAL HOUSING OPPORTUNITY



Document generated Apr 21, 2026. Prices, plans, square footage, features, amenities and materials are subject to change at any time without notice and vary among communities. Listed prices are for informational purposes only, are not binding, and do not create any contractual obligation(s). The price of any home is dependent on numerous factors, all of which are unique to a specific home, and is not guaranteed until specified in a binding contract. Pricing of elevations and additional optional beds/baths varies per plan. Some plans require a premium homesite. Renderings of homes are artist concepts and may not reflect exact colors and materials. Verify current tax rates & jurisdictions with the appropriate taxing authority.