



# Bellflower II

CLASSIC SERIES

**SUNRISE AT GARDEN VALLEY 80-100**

182 MORNING LIGHT LANE, WAXAHACHIE, TX 75165

HOMES FROM  
**\$563,990**

**3,774**  
SQUARE FEET

**4**  
BEDROOMS

**3.5**  
BATHROOMS

**2**  
CAR GARAGE



**ELEVATION C**



**ELEVATION A**

ELEVATION - A



**ELEVATION AS**

ELEVATION - AS



**ELEVATION B**

ELEVATION - B



**ELEVATION D**

ELEVATION - D





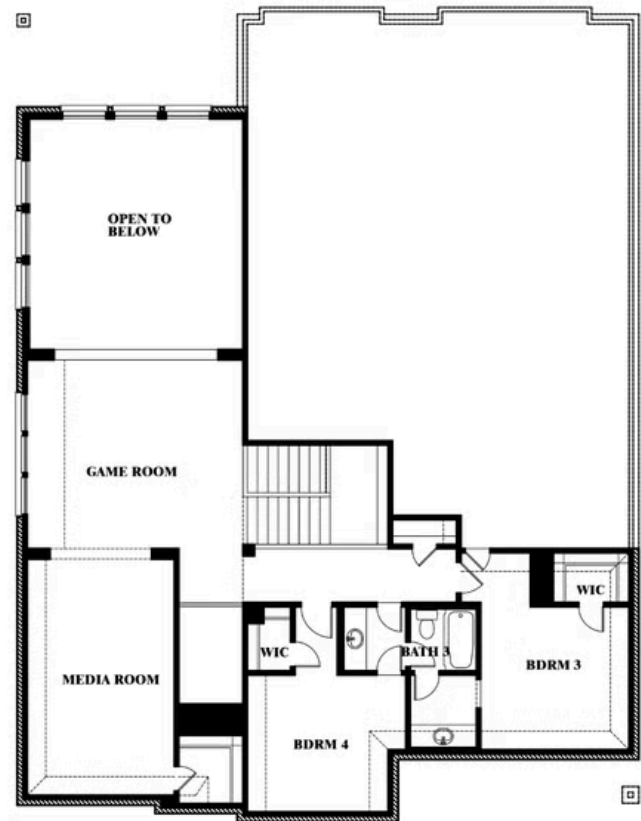
# Bellflower II

## SUNRISE AT GARDEN VALLEY 80-100

182 MORNING LIGHT LANE, WAXAHACHIE, TX 75165



## Bellflower II



This brochure is for general informational purposes and is to be used as a guide only. Changes may be made during the development process and floorplans, dimensions, fixtures, fittings, finishes and specifications are subject to change without notice. Window placement, balcony configuration, wardrobe sizes and living areas may vary slightly within each plan type. **EQUAL HOUSING OPPORTUNITY**



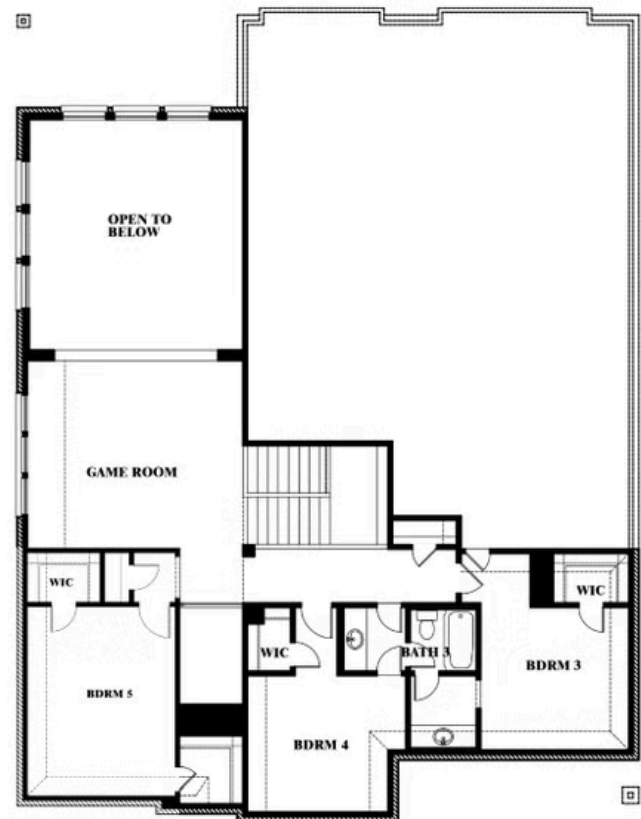
# Bellflower II

## SUNRISE AT GARDEN VALLEY 80-100

182 MORNING LIGHT LANE, WAXAHACHIE, TX 75165



## Bellflower II Opt. Bed 5 at Media



This brochure is for general informational purposes and is to be used as a guide only. Changes may be made during the development process and floorplans, dimensions, fixtures, fittings, finishes and specifications are subject to change without notice. Window placement, balcony configuration, wardrobe sizes and living areas may vary slightly within each plan type. **EQUAL HOUSING OPPORTUNITY**





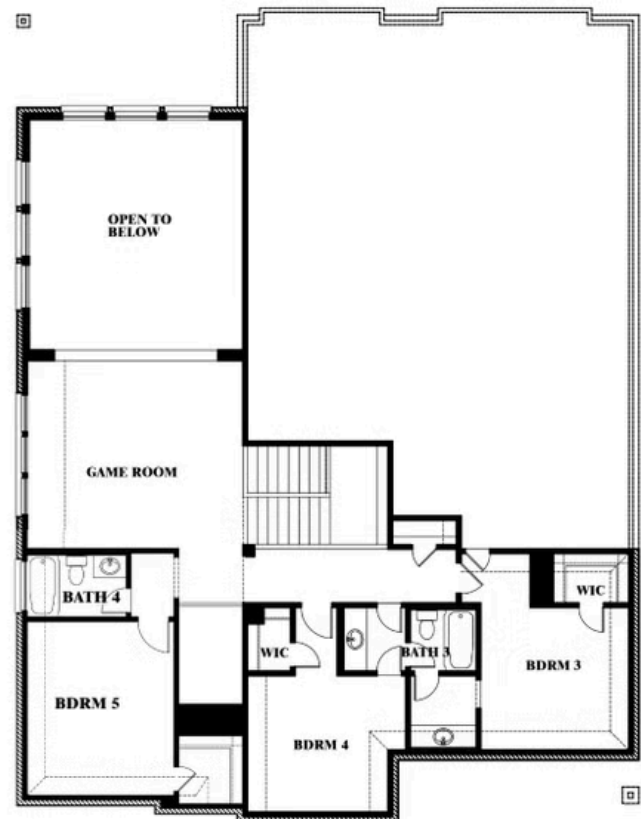
# Bellflower II

## SUNRISE AT GARDEN VALLEY 80-100

182 MORNING LIGHT LANE, WAXAHACHIE, TX 75165



### Bellflower II Opt. Bed 5/Bath 4 at Media



This brochure is for general informational purposes and is to be used as a guide only. Changes may be made during the development process and floorplans, dimensions, fixtures, fittings, finishes and specifications are subject to change without notice. Window placement, balcony configuration, wardrobe sizes and living areas may vary slightly within each plan type. EQUAL HOUSING OPPORTUNITY

