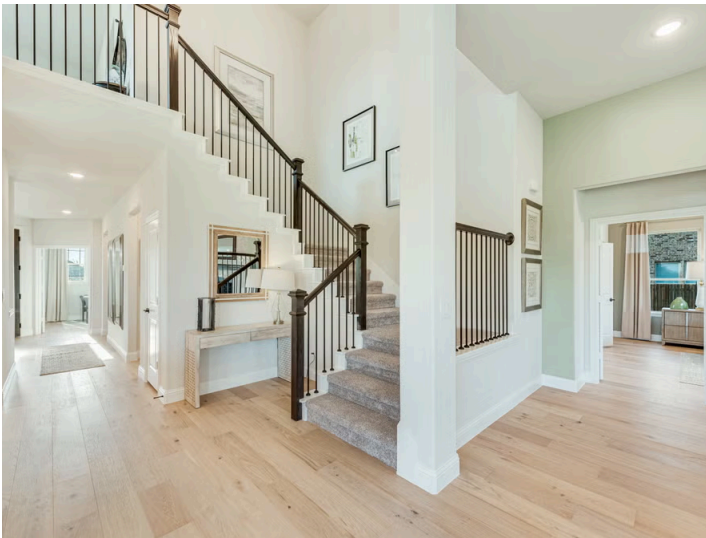




The Oasis at North Grove 60

2,038 – 3,695
SQUARE FEET**3 – 6**
BEDROOMS**2 – 5**
BATHROOMS**2 – 3**
CAR GARAGE**MODEL**1735 Upland Road, Waxahachie, TX 75165 | **Magnolia II**

SELLING FROM NORTH GROVE



Welcome to The Oasis of North Grove, nestled in Waxahachie, one of the most historically and culturally rich cities in Texas.

This charming community will transport you to a simpler time while offering an assortment of entertainment and shopping options. Waxahachie is one of three to receive the First Lady's Texas Treasure Award, and it's not hard to see why. The city hosts an array of attractions and festivals year-round, including the renowned Crepe Myrtle and Victorian Christmas Festival, and the very popular - Scarborough Fair.

North Grove is just a short drive south of the Dallas Metroplex on I-35E and located off Highways 287 and 77.

You'll be thrilled to call this family-friendly community your forever home, with nearby schools and plenty of shopping options!





The Oasis at North Grove 60

Amenities:

- Playground
- Park
- Community Center
- Pool
- Basketball Court
- Splash Park
- Open Pavilion with Bathroom Facility
- Walking/Bike Trails

Local Area Amenities:

- Waxahachie Historic Districts
- Webb Gallery
- Waxahachie Creek Hike & Bike Trail
- Lake Waxahachie
- Waxahachie Wildlife Rehabilitators

Utilities:

- Electric: Reliant 866.222.7100
- Water: City of Waxahachie 469-309-4170
- Internet Providers: AT&T 800.288.2020

Police & Fire:

- Police Department: 469.309.4400
- Fire Department: 469.309.4200

HOA

\$500/year
Goodwin & Company
(214) 445-2742

Tax

Rate Per \$100

2.03

PID

North Grove Public Improvement District - Contact Community manager for more details.

Schools

District	Waxahachie ISD
Elementary	Max Simpson Elementary School
Middle	Finley Junior High School
High	Waxahachie High School

Driving Directions

North Grove is located off of FM 813. From Dallas Hwy/US 77, exit North Grove Boulevard/FM 813. Follow the curve until you reach the community of North Grove. The model address is 1735 Upland Road.

