



# Violet

CLASSIC SERIES

HOMES FROM  
**\$448,990**

**THE RETREAT AT NORTH GROVE 60**  
1735 UPLAND ROAD, WAXAHACHIE, TX 75165

**2,381**  
SQUARE FEET

**3**  
BEDROOMS

**2.5**  
BATHROOMS

**2**  
CAR GARAGE





# Violet

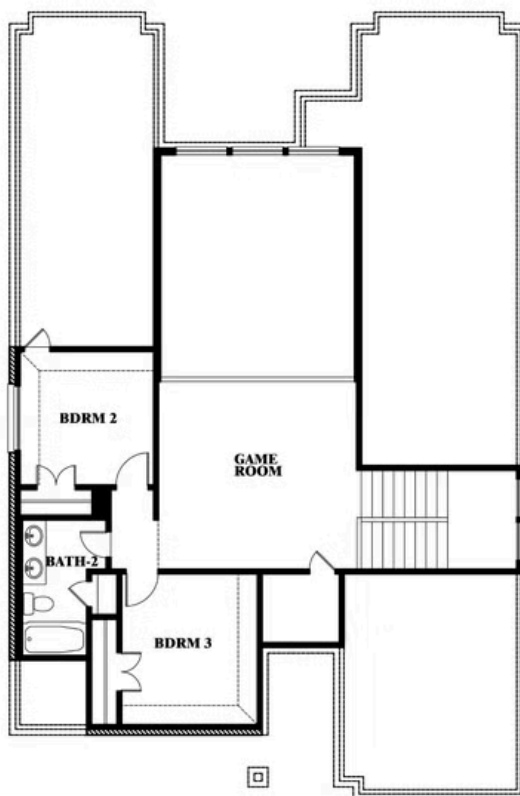
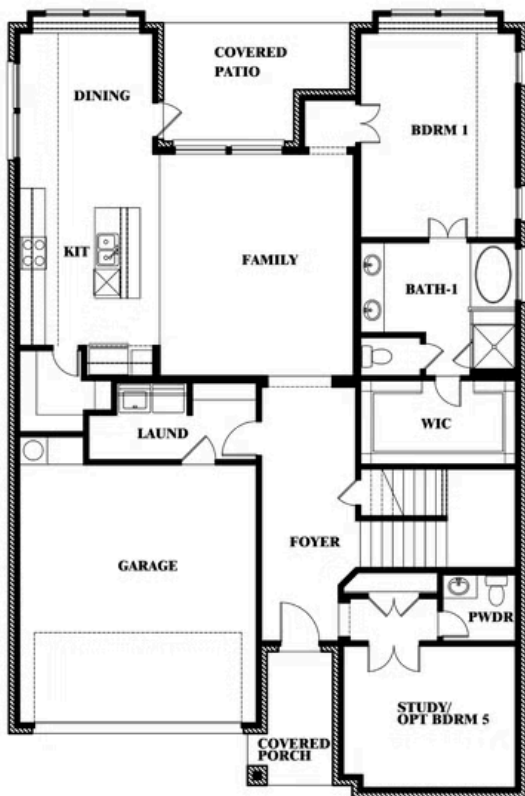
## VIOLET FLOOR PLAN

## THE RETREAT AT NORTH GROVE 60

1735 UPLAND ROAD, WAXAHACHIE, TX 75165



Violet



This brochure is for general informational purposes and is to be used as a guide only. Changes may be made during the development process and floorplans, dimensions, fixtures, fittings, finishes and specifications are subject to change without notice. Window placement, balcony configuration, wardrobe sizes and living areas may vary slightly within each plan type. EQUAL HOUSING OPPORTUNITY





# Violet

**VIOLET FLOOR PLAN WITH OPTIONAL BEDROOM AT STUDY**

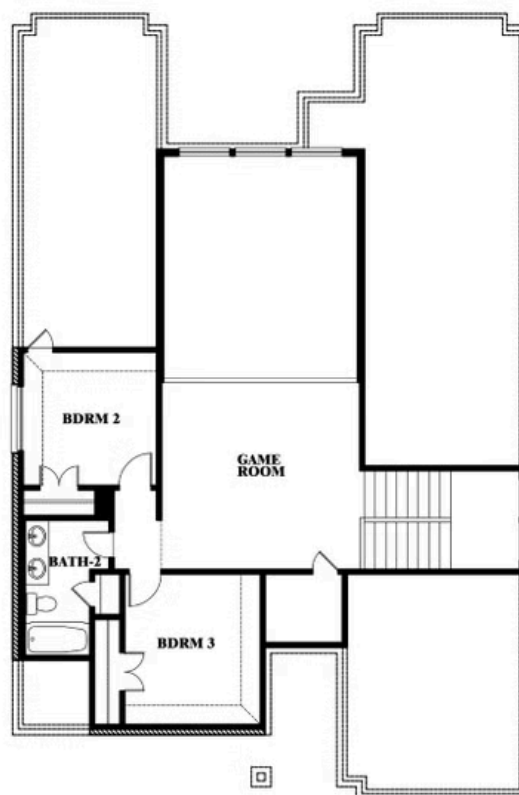
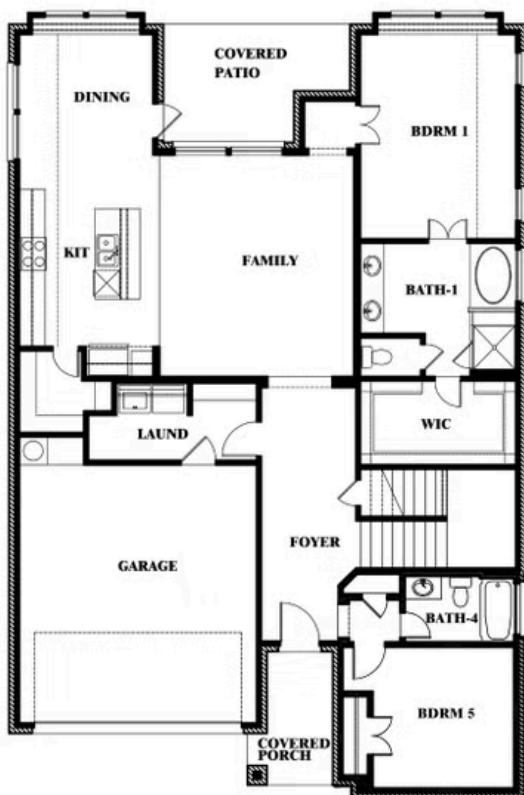
## THE RETREAT AT NORTH GROVE 60

1735 UPLAND ROAD, WAXAHACHIE, TX 75165



## Violet

Opt. Bed 5 & Bath 4 at Study



This brochure is for general informational purposes and is to be used as a guide only. Changes may be made during the development process and floorplans, dimensions, fixtures, fittings, finishes and specifications are subject to change without notice. Window placement, balcony configuration, wardrobe sizes and living areas may vary slightly within each plan type. **EQUAL HOUSING OPPORTUNITY**



Document generated Feb 8, 2026. Prices, plans, square footage, features, amenities and materials are subject to change at any time without notice and vary among communities. Listed prices are for informational purposes only, are not binding, and do not create any contractual obligation(s). The price of any home is dependent on numerous factors, all of which are unique to a specific home, and is not guaranteed until specified in a binding contract. Pricing of elevations and additional optional beds/baths varies per plan. Some plans require a premium homesite. Renderings of homes are artist concepts and may not reflect exact colors and materials. Verify current tax rates & jurisdictions with the appropriate taxing authority.